



*At St. Charles, all are invited to  
meet Christ, know Christ,  
love Christ and serve Christ.*

**October 6, 2024**

**TWENTY-SEVENTH SUNDAY IN ORDINARY TIME**



# *17th Sunday* **IN ORDINARY TIME**

*“Therefore what God has joined together,  
no human being must separate.” (Mk 10:9)*

**St. Charles Parish & School | 313 Circle Drive, Hartland, WI 53029**

**262-367-0800 | [www.stcharleshartland.com](http://www.stcharleshartland.com) | email: [parish@stcharleshartland.org](mailto:parish@stcharleshartland.org)**



# WELCOME TO ST. CHARLES - WE ARE HERE FOR YOU



PASTOR  
Fr. Ken Omernick



ASSOCIATE PASTOR  
Fr. Ariel Orozco

## ST. CHARLES STAFF TEAMS

ASSOCIATE PASTOR & Becoming Fully Catholic:  
Fr. Ariel Orozco, [aorozco@stcharleshartland.org](mailto:aorozco@stcharleshartland.org)

TEACHING PARISH SEMINARIAN:  
Timothy Heyrman, [theyrman@sfs.edu](mailto:theyrman@sfs.edu)

SCHOOL TEAM 262-367-2040  
Principal/School Team Lead: Dan Garvey, Ext. 208,  
[dgarvey@stcharleshartland.org](mailto:dgarvey@stcharleshartland.org)  
School Administrative: Lisa Moehrke, Ext. 206,  
[school@stcharleshartland.org](mailto:school@stcharleshartland.org)  
School Administrative: Karen Dejewski, Ext. 206,  
[kdejewski@stcharleshartland.org](mailto:kdejewski@stcharleshartland.org)  
School Administrative: Nina Wolf, Ext. 206,  
[nwolf@stcharleshartland.org](mailto:nwolf@stcharleshartland.org)

WORSHIP TEAM  
Worship Lead: Peg Kasun, Ext. 225,  
[pkasun@stcharleshartland.org](mailto:pkasun@stcharleshartland.org)  
Music Director: Dr. Aaron Mathews, Ext. 225,  
[amathews@stcharleshartland.org](mailto:amathews@stcharleshartland.org)  
Liturgist: Elizabeth Thompson, M.Div., 262-367-6704  
[ethompson@stcharleshartland.org](mailto:ethompson@stcharleshartland.org)  
Liturgy Team Member: Jacqueline Bernard,  
[jbernard@stcharleshartland.org](mailto:jbernard@stcharleshartland.org)  
Wedding Coordinator: Dee Anne Hamer, Ext. 215,  
[dhamer@stcharleshartland.org](mailto:dhamer@stcharleshartland.org)

DISCIPLESHIP TEAM  
Adult Discipleship Lead: Maria Notch, Ext. 220,  
[mnotch@stcharleshartland.org](mailto:mnotch@stcharleshartland.org)  
Children's Discipleship Lead: Shelly Buchan, Ext. 205,  
[sbuchan@stcharleshartland.org](mailto:sbuchan@stcharleshartland.org)  
Student Discipleship Lead: Bri Alexander, Ext. 221,  
[balexander@stcharleshartland.org](mailto:balexander@stcharleshartland.org)  
Baptism Coordinator: Mary Jo Romportl, Ext. 200,  
[mjromportl@stcharleshartland.org](mailto:mjromportl@stcharleshartland.org)

### OPERATIONS TEAM

Operations Manager: Mike Cattani, Ext. 210,  
[mcattani@stcharleshartland.org](mailto:mcattani@stcharleshartland.org)  
Maintenance Manager: Tim Orzechowski, Ext. 217,  
[torzechowski@stcharleshartland.org](mailto:torzechowski@stcharleshartland.org)  
Accounting: Dee Anne Hamer, Ext. 215,  
[dhamer@stcharleshartland.org](mailto:dhamer@stcharleshartland.org)  
Administrative: Brenda Zingsheim, Ext. 215,  
[bzingsheim@stcharleshartland.org](mailto:bzingsheim@stcharleshartland.org)  
Cornerstone/Safeguarding: Karen Dejewski, Ext. 215,  
[cornerstoneproject@stcharleshartland.org](mailto:cornerstoneproject@stcharleshartland.org)

### COMMUNICATIONS & STEWARDSHIP TEAM

Communications & Stewardship Team Lead: Allison Caswell,  
Ext. 202, [acaswell@stcharleshartland.org](mailto:acaswell@stcharleshartland.org)  
Assistant to the Pastor: Terrie Carew, Ext. 224,  
[tcarew@stcharleshartland.org](mailto:tcarew@stcharleshartland.org)  
Graphic Design Specialist: Renee Krier, Ext. 224,  
[rkrier@stcharleshartland.org](mailto:rkrier@stcharleshartland.org)  
Administrative: Kathy Gillstrom, Ext. 200,  
[kgillstrom@stcharleshartland.org](mailto:kgillstrom@stcharleshartland.org)  
Administrative: Mary Jo Romportl, Ext. 200,  
[mjromportl@stcharleshartland.org](mailto:mjromportl@stcharleshartland.org)

PARISH OFFICE: 262-367-0800,  
Mon. - Fri., 8 am - 4 pm

EMAIL US: [parish@stcharleshartland.org](mailto:parish@stcharleshartland.org)

PARISH SCHOOL: 262-367-2040



[school@stcharleshartland.org](mailto:school@stcharleshartland.org)

WEBSITE & LIVESTREAM:  
[www.stcharleshartland.com](http://www.stcharleshartland.com) or  
scan QR code with phone camera

# WELCOME TO ST. CHARLES - WE ARE HERE FOR YOU

SATURDAY MASS OF ANTICIPATION: 5:00pm

SUNDAY MASS TIMES: 7:00am, 9:00am, 11:00am & 6:00pm

WEEKDAY MASS: Monday - Friday: 8:30am & Saturday: 8:30am

## EUCCHARISTIC ADORATION

We offer Adoration from Mondays at 5 a.m. through Friday evenings at midnight.



## RECONCILIATION

**Saturdays: 9:30am - 10:30am & Thursdays: 5:00pm - 6:00pm**

**Please arrive within 30 minutes of the start time.**

**We have one Priest on Saturdays and two Priests on Thursdays.**

## SACRAMENT OF THE SICK/ ANOINTING MASSES

Sacrament of the Sick Masses are the 2nd and 4th FRIDAYS of every month or by appointment with Fr. Ken or Fr. Ariel (call the Parish Office).

OUTREACH SERVICES TEAM: Terri Blazek: 262-367-7608, [jtblazek@wi.rr.com](mailto:jtblazek@wi.rr.com)

TO ASK FOR PRAYERS or to be added to the email list, please email: [prayernetwork@stcharleshartland.org](mailto:prayernetwork@stcharleshartland.org)

FOR EMERGENCY PRAYERS, please email: [emergencyprayers@stcharleshartland.org](mailto:emergencyprayers@stcharleshartland.org)

*Printed weekly prayer sheets are available on the information wall.*

ST. VINCENT DE PAUL: if you need food, shelter or assistance call 262-367-0800 (Parish Office)

NEED HOME COMMUNION:  
For information call 262-367-0800 (Parish Office)

## Mass Intentions for the Week of October 6th



### Sunday, October 6

7:00 am † Al & Doreen Rohde  
9:00 am † Thomas Balke  
11:00 am † Henry & Ida Schneider  
6:00 pm † Julie Wooldridge

### Monday, October 7

8:30 am Living and Deceased Members of the Richard Carmichael Family

### Tuesday, October 8

8:30 am Living and Deceased Members of St. Charles Young at Heart

### Wednesday, October 9

8:30 am Special Intention

### Thursday, October 10 ~ New School Mass Start Time

9:00 am Deceased Members of the Gunther Family

### Friday, October 11

8:30 am † Carol Seidl

### Saturday, October 12

8:30 am Special Intention  
5:00 pm † Ken Horwath

### Sunday, October 13

7:00 am Living and Deceased Members of St. Charles  
9:00 am † Joshua Rasmussen  
11:00 am † Norma Sanger  
6:00 pm † Karolis Palmiter



## WEDDING BANNS

2nd Bann ~ Madeline Illman & Ryan Schmitt

1st Bann ~ Lauren Blunt & Zachary Harvey

Please pray for the repose of the soul of

**Ted Seitz**

May his soul and the souls of all the faithfully departed  
REST IN CHRIST'S PEACE.

One of the easiest ways to support St. Charles Parish and School is through the secured online e-giving system.



PARISH SUPPORT  
THRU SEPTEMBER 8TH

FISCAL YEAR  
JULY 1 THRU JUNE 30

### 2024 - 2025

Envelopes..... \$21,521.60  
Offertory..... \$2,333.15  
Weekend Total ..... \$23,854.75  
E-Giving ..... \$12,726.34  
YTD ..... \$533,391.49

### 2023 - 2024

Envelopes..... \$21,188.00  
Offertory..... \$1,737.00  
Weekend Total ..... \$22,925.00  
E-Giving ..... \$9,084.25  
YTD ..... \$444,470.04



## THIS WEEKEND'S GOSPEL MEDITATION

### 27TH SUNDAY IN ORDINARY TIME

As a young pastor years ago, I met with a middle-aged couple who had been divorced and civilly remarried. They were frustrated that an annulment had to precede a Church marriage. Sympathizing with their plight, I promised to walk with them along their journey. Once as we sat in my office, the man said to me, "Why is the Church so difficult on marriage?" I replied, "Actually, Jesus' teaching is what's difficult." He furrowed his brow and asked what I meant.

We opened the Bible and together read today's gospel passage from Mark 10:12 in which Jesus says, "Whoever divorces his wife and marries another, commits adultery with her..." My two friends sat in silent astonishment. Surely Jesus understands the complexities of human life and sexual love. The words hung thick and heavy in the air. How could the merciful Lord be so seemingly unrealistic in his expectations, especially with so much divorce and remarriage in our world?

I didn't know what to say. So, we kept reading. Next, Jesus says, "Let the children come to me." The innocence of children allows them to receive and give love, to trust unconditionally, to believe in love that endures. Most children aren't yet jaded by statistics, broken hearts, or dysfunctional relationships. Children remind us of the world to come. The couple and I began to talk about child-like trust in Jesus and his teaching, and we continued to move forward. When it comes to the Church's demanding teaching on marriage, it's best to approach it as trusting children, whatever situations in which we find ourselves.

— Father John Muir

©LPi

## PRAY WITH SCRIPTURE

### Lectio Divina

15 minutes each day spent in God's presence — reading, reflecting, responding and resting with his Word — adds up to 90 hours in one year. That is time well spent and a testimony to how a little at a time turns into something remarkable!

### Sunday, October 13th Readings

Wis 7:7-11/Ps 90:12-13, 14-15, 16-17 (14)/Heb 4:12-13/  
Mk 10:17-30 or 10:17-27

To find readings for the weekdays and/or Feast Days, please visit  
<https://bible.usccb.org/bible/readings>.

### Reflection questions for Sunday, October 13th

- We hear how Solomon prayed for and received the virtues of prudence and wisdom. What are you praying to the Lord for these days?
- Hebrews teaches us that "the word of God" knows and understands what is in our hearts and minds. Do you find this comforting or unsettling?
- Jesus taught his followers that excessive wealth and possessions can impact one's priorities in life. What are some practical ways to keep Jesus as a top priority in your life?

**READ. REFLECT. RESPOND. REST.**



*Cut out and keep in your Bible for reference!*





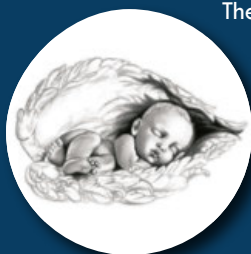
## SATURDAY RECONCILIATION TIME CHANGE

Starting **this Saturday, October 5**, we will offer the sacrament of Reconciliation in the morning from **9:30-10:30 a.m.** We will no longer offer the sacrament in the afternoon from 3-4 p.m. We will continue to offer Reconciliation on Thursdays from 5-6 p.m. and have two priests available that evening. We hope you will join us often for this beautiful sacrament of the Church!

ST. CHARLES PARISH

## Mass of Hope and Healing

TUESDAY, OCTOBER 15TH AT 7:00 PM



The Mass is for individuals and families who have suffered the loss of a child during or after pregnancy or at any stage of life.

We welcome you to arrive early to record your child's name(s) in the book of remembrance in the Narthex and light a candle at the foot of the altar before Mass.

There will be a light reception in the Borromeo Hall following the Mass so you may enjoy fellowship and share stories.

## Bulletin Advertisers of the Week

Please support our advertisers!



SEWER AND WATER CONTRACTOR  
WHEN YOU EXPECT THE BEST!

**TOWN BANK**  
N.A.  
A WINTRUST COMMUNITY BANK

800-433-3076

FDIC www.townbank.us

I  
AM  
HERE



COME  
VISIT  
ME!

## ADORERS NEEDED

We would love to have you join us in our Perpetual Adoration Chapel! We are currently in need of a handful of Adorers to spend time with the Lord. Our UPDATED open time slots are as follows:

**Tuesdays** from 8-9 am, 11 am-12 pm, and 4-5 pm

**Wednesdays** from 2-3 am, 4-5 am, and 9-10 am

**Thursdays** from 1-2 am (two Adorers needed) and 5-6 am

**Fridays** from 6-7 pm

If you are interested in praying with us during these times, please visit the News story on our website.

## BLESSING OF THE PETS



October 4 is the Feast of St. Francis of Assisi. We will celebrate the Blessing of Pets this year is this **Sunday, October 6 at 2pm** on the front porch of the new church.

All animals are welcome, but we ask that they be safely contained in a crate or on a leash.

## SHARE YOUR LOVE OF THE EUCHARIST



Eucharistic ministers are needed to bring JESUS to Heritage Lake Country, a senior living facility. This would only require a two-hour commitment on a Tuesday morning per month. Training is provided, and you will be paired up with another Eucharistic minister. If you feel called to serve in this gratifying ministry, please contact the Parish Office at 262-367-0800. Thank you!



## Our Lady of Fatima Requested: "PRAY THE ROSARY"

**Saturday, October 12th at Noon**

Please join fellow parishioners in the 2024 Public Square Rosary Crusade (one of 20,000 plus rallies throughout the United States.) Our nation is in great need of prayer, repentance and conversion. We ask God to save America through the Rosary of His Most Holy Mother.

Please join us in praying for our nation on Saturday, Oct. 12th at noon to honor the 107th anniversary of the Virgin Mary's 6th and final apparition at Fatima on October 13th. The local Public Square Rosary Rally will take place at 163 E. Capitol Drive (Arkenstone Real Estate Experts-Mike Moen) in downtown Hartland.

Contact Carol Betzhold at 262-719-7155 for more information.

## 2024 CIRCLE OF LOVE

If you know of a person or family who has hit hard times due to a job loss or serious illness/injury, please consider sponsoring them this Christmas season. **We do require that you be a registered member of St. Charles to sponsor someone.**



**Circle of Love Sponsor Sheets can be found on the Sign-up Shelf in the new church Narthex.** When completed, place in the Gift Box marked "Circle of Love" also located on the Sign-up Shelf in the new church Narthex.

**All Sponsor Sheets are due back on or before Wednesday, October 16th.**

If you have any questions, please call/e-mail Debbie Lancour at 262-367-3869 or d2lancour@yahoo.com.

**Volunteers: Our 2nd meeting is Tuesday, October 29th from 1-3 p.m. in the Borromeo Hall.**



## BE A LIFE TEEN CORE TEAM MEMBER

Are you looking for a way to be involved at St. Charles? Consider joining the Lake Country Life Teen Core Team. This relational ministry provides an opportunity to walk with middle and high school teens on their faith journey. To learn more about the Core Team, please contact Bri Alexander at [balexander@stcharleshartland.org](mailto:balexander@stcharleshartland.org).



## BE A HOLY DUSTER

Our church is kept clean by a group of parishioners who do weekly cleaning to keep St. Charles looking its best. We are in need of additional volunteers. Most of our cleaning is done on Tuesdays and Thursdays right after morning Mass, adjusted for funeral Masses or other activities. If Tuesday or Thursday morning does not work for you, there are tasks that may be done at other times or days. Sign up for one day a week, month, or when you are available. Please contact Lynn Rose with any questions or to sign up for a time that works for you at 262-894-9940, [lrosecardenas@gmail.com](mailto:lrosecardenas@gmail.com) or the Holy Dusters SignUpGenius on our website.



"Any country that accepts abortion is not teaching its people to love, but to use any violence to get what they want."

This is why the greatest destroyer of love and peace is abortion."

~Saint Teresa of Calcutta



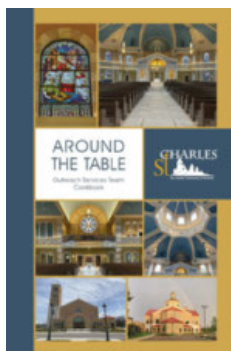
## FELLOWSHIP WEEKEND IS BACK!

We are excited to announce that our Fellowship Weekends are returning! Please join us for our first Fellowship Weekend in the **new Borromeo Hall after all Masses this weekend, October 5 and 6**. This is a great opportunity to see all of the renovations that have been completed in our previous worship space and Borromeo Room!



### HELP IN OUR SCHOOL OFFICE

Our School Office is currently in need of an additional part-time Administrative Assistant! If you are interested in joining our school staff, please call the School Office at 262-367-2040 or visit the Archdiocese of Milwaukee's careers page (<https://www.archmil.org/jobs.htm>).



## ORDER YOUR ST. CHARLES OUTREACH SERVICES TEAM COOKBOOK

The cookbooks cost \$20 each and will be available for pick up at St. Charles in Fall.

Get your commemorative cookbook in time for the holidays. The cookbook has over 200 recipes from fellow parishioners. It's a great way to support St. Charles Outreach Services Team and all the wonderful ways they support and serve our community!

If you would like to order and pay via charge/debit card, please scan the QR code to access the online form or visit <https://parish.stcharleshartland.com/cookbook>. Visit the information wall for paper form and to pay by cash/check. This cookbook is a limited edition, so order now!



## ST. VINCENT de PAUL SOCIETY




**FOOD PANTRY NEEDS:** Ketchup, Salad Dressing, Cooking Oil, Ragu Spaghetti Sauce (Variety of Flavors), Paper Towels, Toilet Paper

In today's Gospel on the Twenty-Seventh Sunday in Ordinary Time, Jesus tells His disciples, "Let the children come to me... for the kingdom of God belongs to such as these."

This week, please help the St. Charles Society of St. Vincent de Paul to bring the love and mercy of Jesus to the children in our community who are hungry and in need of our care.

Is there a neighbor or friend of yours who is in temporary need because of a loss of job or an illness? Please contact the St. Charles SVDP at 262-367-0800. The St. Charles SVDP Food Pantry is located at 229 Lawn Street, Hartland and it is open Tuesday mornings between 10am and noon. It is also open on the second and fourth Tuesday evenings of the month between 5:30pm and 7pm.



### ST. CHARLES NIGHT AT CULVER'S IN HARTLAND

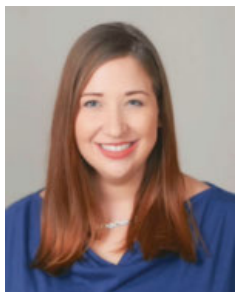
Monday, October 7th from 5:00-8:00 pm

Mention that you are with St. Charles, and the School receives 10% of the evening's sales! Thanks for your support!



## SCRIP FOR YOUR HALLOWEEN NEEDS!

Use Scrip to purchase your costume or candy for Halloween. Remember, when you buy products with Scrip gift cards, you support our parish and school! You can order gift cards through their website ([www.raiseright.com](http://www.raiseright.com)) and have them sent to St. Charles' Parish Office to pick up. You are also able to fill out the paper order form at the Parish Office to receive your order. Thank you for your consideration and supporting St. Charles!



## WELCOME OUR NEWEST WORSHIP TEAM MEMBER

The St. Charles Worship Team is happy to welcome a new member, Jacqueline Bernard. As our parish grows, so too do requests for sacraments. This year we are celebrating 83 baptisms,

26 weddings, and so far have had 43 funerals. Since St. Charles places Worship as a top priority, we welcome this full-time Staff Member to ensure that sacraments are done well. Jacqueline started on September 30 as the Liturgy Team Member. With over 20 years of experience as a Cantor, she also has a Master's Degree in the Science of Management from Cardinal Stritch University. Jacqueline will be an integral part of the Worship Team, working with wedding couples, funeral families, baptism families, and carrying out additional liturgical support. An active parishioner, Jacqueline enjoys spending time with her husband Andrew and their two year old son Jude. Welcome to St. Charles, Jacqueline!



**ARE YOU THE ONE?  
COME WORK WITH US!**

Is your heart on fire for our Lord? Are you feeling called to serve in a ministerial setting? Do you want to make a difference in your community by working where your faith is? St. Charles Parish is responding to our incredible growth by seeking faith-filled, missionary disciples to join our AMAZING parish staff!

- Part-time role supporting our 51 Small Groups
- Full-time role to support our dynamic Discipleship team forming hearts and minds of all ages
- Full-time Maintenance role to oversee the buildings and grounds team during evenings and weekends
- Benefits are heavenly! Staff retreats, Adoration, generous PTO, available healthcare insurance and pension plan.

If you or someone you know is interested in learning more, please check our website or call Michelle Wick, Interim Human Resources, directly at 262-312-4952.

## Grieving with Great HOPE

FIVE-WEEK GRIEF SUPPORT WORKSHOP AT ST. CHARLES

**September 28th - October 26th**

Saturdays, 9:30 - 11:30 am in the Life Teen Cafe

***Feel free to attend any of the Saturdays!***

Grieving with Great HOPE is a five-week grief support workshop using a video on-demand format offered by St. Charles Bereavement Ministry. It offers a prayerful, practical and personal approach for anyone who is mourning the loss of a loved one. If you have lost a spouse, a child (including pregnancy loss), a grandchild, a parent, another family member or a friend, you are encouraged to attend. Presenters will include two priests as well as John and Sandy O'Shaughnessy from Good Mourning Ministry, a Catholic bereavement organization.



If you would like to register for the workshop, visit the parish website and click on the NEWS story to find the online registration form or scan the QR code. For more information or questions, please contact Maria Notch at [mnotch@stcharleshartland.org](mailto:mnotch@stcharleshartland.org).



**September 25 - November 3, 2024**

40 Days for Life is an internationally coordinated 40-day campaign that aims to end abortion locally through prayer and fasting, community outreach, and a peaceful all-day vigil in front of abortion businesses.

Come and join the St. Charles Respect for Life & Elizabeth Ministry every Tuesday and/or Saturday to pray the rosary in front of Planned Parenthood.

**Tuesdays: 12-1 pm at 1428 N. Farwell Ave., Milwaukee**  
**Saturdays: 10-11am at 426 W. Main St., Waukesha**

If you would like more information about 40 days or need a ride, please call the Parish Office at 262-367-0800.

*Please note that if you are unable to join us in prayer during these times, please pray and fast for the unborn and their parents.*

# BEING GOOD STEWARDS OF OUR PRIESTS

*International Catholic Stewardship Council | October 2024 • e-Bulletin*



Catholic priests are precious commodities, gifts to our communion of faith. But little do we know of their joys or the struggles they often face in maintaining integrity and sanctity in their priesthood. We may imagine they get up every day and respond to a never-ending line of spiritual needs. But we cannot imagine how their lives are filled with intense pastoral encounters each day. With the many demands on their time and energy, priests deserve our support.

Here are 15 ideas, in no particular

order, to help us start thinking more intentionally about how we can better affirm and steward the spiritual and emotional well-being of our priests:

1. Pray for priests, especially for your pastor and others with whom you are most closely connected. Let them know you are praying for them from time to time.
2. Respect a priest's need to take his scheduled day off each week and know what that day is. Don't contact him unless he asks. Follow the appropriate protocols for contacting a priest in case of an emergency.
3. Many priests get numerous gifts of sweets and baked goods during the holidays or as gifts of appreciation (A priest shared that one Christmas, he received 37 different gifts of sweets and baked goods)! Consider other options to help keep our priests healthy and fit as they serve us in so many different capacities.
4. Respect a priest's privacy regarding personal health issues.

---

*With the many demands on their time and energy, priests deserve our support.*

---

5. Expect and encourage priests to take their full allotment of vacation time each year as well as an annual retreat to help them, both physically, mentally and spiritually.
6. Recognize that the ministry of priesthood requires a great deal of emotional energy (e.g., responding to deaths, conflicts in the parish and multiple demands from parishioners). Be especially sensitive to the times of the liturgical year that demand more of a priest's time such as the Advent and Lenten seasons.
7. Respect a priest's responsibility to keep many issues and information confidential. He may know of private information about parishioners or others, but he cannot share it with you.

8. Discuss any conflicts or disagreements you may have with your pastor directly and confidentially. Give him the benefit of the doubt and seek reconciliation, not a "win." Encourage others to do the same.

9. Support the pastor in setting expectations by parishioners for his time and scheduling priorities. Many pastors are so busy that an appointment with him may take weeks if it is not an emergency. Consider asking a staff person to assist you if that is possible.

10. If you are a lay leader in the parish, work with the pastor to identify which parish programs and activities truly require his presence and which might be equally guided by lay leadership. Some people expect the priest to be at every parish event, and that is just not possible.

11. Assume that a priest strives for holiness and integrity each and every day. Discuss theological differences in a respectful manner, recognizing that Catholics can come to somewhat different understandings on some issues depending on their background, life situation, and the Holy Spirit's guidance in their lives.

12. Understand that "social" events with parishioners, although fun for everyone, are not always truly social events for a priest who can be pulled into a pastoral role at any time.

13. Don't have expectations that the priest is able to be your personal friend. Many priests need to set boundaries in today's climate. When they may have hundreds or thousands of souls to be the spiritual leader of, it is difficult for them to have many personal relationships outside of family and close friends.

14. Extend a simple "thank you" to a priest, and especially your pastor, when the occasion arises. An appreciation card or note is often needed, and will be welcome at any time and not just special occasions.

15. The best support you can offer and gift you can give to a priest is to practice your faith, offer to help him where needed and share your gifts of time and talent so he can direct you to a ministry or apostolate where you can serve him, the parish and the people of God.





Knights of Columbus  
**CHARITIES**  
*United in Charity*

**Knights of Columbus Kettle Moraine Council 3562  
Annual Columbus Day Banquet  
Sunday, October 13th, 2024  
Queen of Apostles Parish, Grellinger Hall  
N35W23360 Capitol Drive, Pewaukee 53072  
Beverages served 4:00pm; Dinner at 5:00pm,  
Awards and Raffles follow Dinner.**

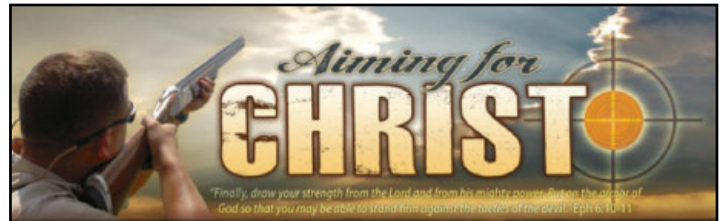
You are invited to the Knights of Columbus Commemorative Columbus Day Banquet. All you can eat salad & garlic bread, pasta, sauce, meatballs, all expertly prepared by Chef Dave Famularo following authentic Sicilian family recipes.

Soda, coffee & milk included. Tickets for beer and wine. Door prizes. Donation \$13.

All are welcome. Proceeds benefit local Lake Country Charities. Tickets are available from Sam Vallone, (262) 691-1074.

**No tickets sold at the door.**

**No tickets sold after Thursday, October 10th, 2024, Noon**  
Seating is limited. Please make your reservations early.



**Saturday, October 12, 2024 at the Waukesha Gun Club**

Build on your faith and enjoy some FATHER & SON camaraderie in the great outdoors. Cost is \$40/person or \$60/person with raffle package. To see the days events or whats included in the price visit: <https://menofchrist.net/event/aiming-for-christ-4/>.

Registration at: [https://gatheringline.com/register/integrated/728e605cb6f44a53a650aae7922f28f9/select\\_tickets](https://gatheringline.com/register/integrated/728e605cb6f44a53a650aae7922f28f9/select_tickets). Enter your squad leader under "Parish" or single if you would like us to match you up. Questions? Contact Michael Schulze at [mkschulze10@gmail.com](mailto:mkschulze10@gmail.com) or 262-327-4258.



**REGISTER NOW!**

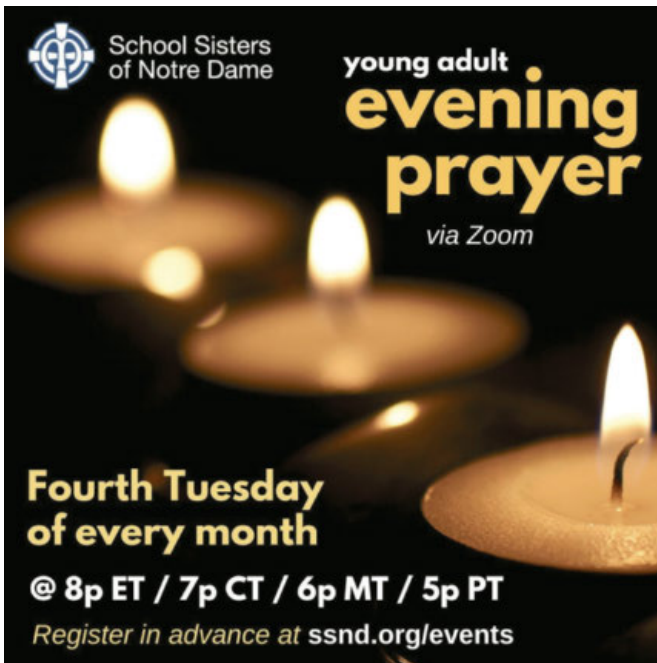
**2024 WOMEN OF CHRIST CONFERENCE**

All women are invited to celebrate the beauty of their Catholic faith at the annual Women of Christ Conference on Saturday, November 16 at the Brookfield Conference Center at 325 S. Moorland Road across from Brookfield Square.

The theme of this year's conference is: Hail, Full of Grace. Join us as we unpack the astonishing richness of Mary as Virgin, Bride and Mother.



Come for a day of joy and camaraderie and be renewed and fortified in your faith! Take encouragement from dynamic speakers - Dr. Edward Sri, Sr. Mary Rachel Capets, OP, Fr. Michael Joseph Paris, OCD, Fr. Patrick Magnor, and Mary Magnor as MC. Take part in confession and Adoration and shop the vendor market for the perfect Christmas gifts. The day concludes with Vigil Mass celebrated by Archbishop Jerome Listcki. To register, contact your parish liaison or go to [www.womenofchrist.net](http://www.womenofchrist.net).





**Ground Crew Service**

**Full Service Landscape Management**

**262.821.9680**

[www.groundcrewservice.com](http://www.groundcrewservice.com)

**Hartland Terrace Assisted Living**

- RN Lead 24-Hour Elite Care Team
- Full Continuum of Care • Memory Care
- All Inclusive Pricing • Private Studios
- Family Centered Care Model

327 North Avenue • Hartland | 262-369-4391  
[www.hartlandterrace.com](http://www.hartlandterrace.com)

**TODD WANGERIN ELECTRIC, Inc.**

Free Estimates - Licensed - Insured  
Over 20 years experience  
Todd Wangerin 262-719-4411  
[twelectric4411@att.net](mailto:twelectric4411@att.net)

**7 Day Free Trial**

- Personal Training Call or text Ryan Zingsheim 262-527-5880
- Group Fitness
- Open Gym
- And more!

**RYZING FITNESS**

Founded by parish alumni



**Rick Kalscheuer**  
Parish Member  
MyKnowledgeBroker.com  
800.566.7007

**we know.**

**Holzhauser, Hewett & Barta S.C.**  
**Orthodontic Care For Children And Adults**

Daniel Holzhauser DDS MS | Charles Hewett DDS MS | Joshua Barta DDS MS | Benjamin Schneider DDS MS  
520 Hartbrook Dr., Hartland 262-367-7076  
2090 Continental Dr., West Bend 262-306-0600  
10225 W. Capitol Dr., Wauwatosa 414-463-5700

[www.hhortho.com](http://www.hhortho.com)

**IF YOU LIVE ALONE**

**MDMedAlert!**

- ✓ Ambulance/Police
- ✓ Family/Friends
- ✓ GPS & Fall Alert

As Low As **\$19<sup>95</sup>** mo.

**CALL NOW!**

**800.808.9294**  
[md-medalert.com](http://md-medalert.com)



**FREE AD DESIGN**  
with purchase of this space  
**CALL 800-477-4574**

**Join our Team!**

Serve your local Catholic Community, become an agent with the Knights of Columbus!

Contact us at [www.kofcwi.org](http://www.kofcwi.org)

Life Insurance • Disability Income Insurance  
Long Term Insurance • Retirement Annuities

**Tim J. Nowak, FICF**  
General Agent (920) 810-6188  
[timothy.nowak@kofc.org](mailto:timothy.nowak@kofc.org)



**KOWAL INVESTMENT GROUP**  
The Retirement Specialists  
**Aaron T. Kowal, CFP®**  
W238N1660 Busse Rd., Ste. 100, Waukesha, WI 53188  
262-522-4040  
[www.kowalinvestmentgroup.com](http://www.kowalinvestmentgroup.com)

Call us to schedule your free, no obligation, financial check-up today.

**BUNZEL'S OLD FASHIONED MEAT MARKET**

Fresh Custom Cut Choice Meats  
Party Trays • Catering  
Thank You For Supporting A Family Tradition  
9015 W. BURLEIGH 873-7960  
[www.bunzelmeats.com](http://www.bunzelmeats.com)

**FOOT & ANKLE**  
Associates of Wisconsin  
Parish Member  
Dr. Amy Galati  
Call: (262) 542-3779  
[www.footandanklewi.com](http://www.footandanklewi.com)

**DOES YOUR NONPROFIT ORGANIZATION NEED A NEWSLETTER?**

Engaging, ad-supported print and digital newsletters to reach your community.

Visit [lpicommunities.com](http://lpicommunities.com)

**OUR COMMUNITY NEWSLETTER**  
OCTOBER EDITION

Scan to contact us!

**Culver's**  
701 Industrial Ct., Hartland  
262-367-5800

**TOWN BANK**  
A WINTRUST COMMUNITY BANK  
800-433-3076  
[www.townbank.us](http://www.townbank.us)

**Palmer's STEAKHOUSE**  
[www.Palmerssteakhouse.com](http://www.Palmerssteakhouse.com)  
122 E. Capitol Dr. • Hartland, WI  
262-369-3939

**FALBO PIZZERIA**  
Carry Out ~ Delivery ~ Catering  
262-367-2700 | [FalboPizza.com](http://FalboPizza.com)  
Pizzas • Subs • Salads • Appetizers  
Located on 418 Merton Avenue off Hwy 16 in Hartland

**CHARLES ST.**  
St. Charles School... We choose Christ in learning, living, & values in the light of our faith.  
262-367-2040  
[www.stcharlesschoolhartland.com](http://www.stcharlesschoolhartland.com)

**JENSON MOTORS**  
Auto - Truck Repair  
Hours: Mon-Fri 7:30-5:30  
Proprietor: Guy Jenson  
262-367-5556  
364 Cottonwood Ave., Hartland, WI

**catholicmatch® Wisconsin**  
CatholicMatch.com/WI

**VISU-SEWER, INC.**  
262-695-2340  
Professional Sewer Inspection, Maintenance and Rehabilitation Services  
Parish Members  
[www.visu-sewer.com](http://www.visu-sewer.com)

*Compliments of:*  
**Boehme & Taylor, CPAs**

**PROMACH**  
CL&D  
**\$2,000 RETENTION BONUS IN THE FIRST YEAR!**  
**\$20+/HOUR**  
[cldgraphics.com/careers](http://cldgraphics.com/careers)

**LAKESIDE INTERNATIONAL TRUCKS** **BADGERLAND IDEALEASE**  
Offering Wisconsin businesses transportation solutions nearly 40 years.

- Truck Sales
- Parts
- Service
- Body Shop
- Leasing & Rental

SERVING: Milwaukee • Madison • Racine  
West Bend • Sheboygan • Janesville • Monroe • Rockford

**Bill Reilly, Jr.**  
Parish Member

**EVERT-LUKO FUNERAL HOME & CREMATION SERVICES**  
Guiding with skillful hands and soulful hearts  
**262-367-2156**  
[www.evertlukofuneralhome.com](http://www.evertlukofuneralhome.com)

**KLINK'S KARPETS, INC.**  
Hartland's Floor Covering Center  
Family Owned & Operated for over 47 Years  
Carpeting & Hard Surfaces  
107 North Ave. Hartland, WI  
367-4670 Parish Member

**We help real estate investors invest in passive assets and defer tax.**  
**If you are planning on selling your investment property, let's talk.**

**BRANDON BRUCKMAN**  
414-882-8738  
[www.investwithinsight.com](http://www.investwithinsight.com)

**Broaching Technologies**  
Machines • Tooling • Subcontracting  
Blind and Thru Hole: [www.keyway-spline-broaching.com](http://www.keyway-spline-broaching.com)  
Broaching, Splining, Keyseating, P (262) 820-1200  
Slotting, Shaping [sales@broachingtech.com](mailto:sales@broachingtech.com)

**DAVE PERRY**  
heating • cooling  
Proudly Serving the Lake Country Area for more than 20 years  
Heating • Air Conditioning • Geothermal  
New Construction • Replacement  
262.966.1959  
[www.daveperryheatingandcooling.com](http://www.daveperryheatingandcooling.com)

**INSIGHT INVESTMENT ADVISORS**  
**BRANDON BRUCKMAN**  
414-882-8738  
[www.investwithinsight.com](http://www.investwithinsight.com)

**CMC**  
For All Your Remodeling Needs!  
KITCHEN & BATH REMODELING  
COMPLETE HANDYMAN SERVICES  
**JIM FISCHER**  
[fischerjames29@gmail.com](mailto:fischerjames29@gmail.com)  
414-614-7329

**Generations DENTAL**  
Jim Muenzenberger, D.D.S.  
and Kelly Newman, D.D.S.  
Parish Members  
136 E. Capitol Dr. Hartland, WI 53009  
Office 262-369-2750  
[GenerationsDentalHartland.com](http://GenerationsDentalHartland.com)

**Sprung Heating & Pump Service LLC**  
HVAC • PLUMBING • WELL PUMPS • GENERATORS  
PO BOX 3024 • MERTON, WI 53056  
**262-538-1400**  
[www.sprungheating.com](http://www.sprungheating.com)

**Lake Country Eye Care**  
580 Hartbrook Dr. • Hartland, WI  
Amber A. Dentz, OD - Parishioner  
[www.lakecountryeyecare.com](http://www.lakecountryeyecare.com)  
262-367-6610

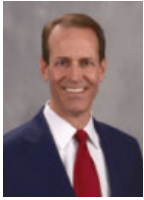


For ad info. call 1-800-950-9952 • [www.4lpi.com](http://www.4lpi.com)

St. Charles Catholic Church, Hartland, WI

B 4C 01-0639

Helping you achieve financial dreams



**James Dunn**  
Managing Director – Financial Advisor  
(262) 395-1101  
www.dunninvestmentmanagement.com



**Lake Five**  
LANDSCAPE SUPPLY LLC  
Mulch • Firewood • Nursery  
**262-777-1523**  
W275N7813 Lake Five Rd Hartland, WI  
[LakeFiveSupply.com](http://LakeFiveSupply.com)

**Lake Country**  
**Bed Barn**  
Good Morning Store  
Mattress & Furniture Store  
600 Hartbrook Dr, Hartland  
Parish Member

**Brenna Fischer**  
Hairstylist  
**262-844-5934**  
601 Ryan St., Ste 302  
PEWAUKEE WI  
[brennafischer.glossgenius.com](http://brennafischer.glossgenius.com)

**REICHL & KOLSTAD**  
**ORTHODONTICS**  
Dr. Peter Reichl & Dr. James Kolstad  
look forward to meeting you!  
Offering Traditional Braces & Invisalign  
Located in Waukesha, Mukwonago & Hartland  
**262-547-2827**  
[www.ReichlKolstadOrtho.com](http://www.ReichlKolstadOrtho.com)

**WISE**  
DESIGN BUILDERS  
**262-790-4444**  
Parish Members  
[www.wisedesignbuilders.com](http://www.wisedesignbuilders.com)  
  
*Lake Country Remodeling Specialist*

**CARPET PLUS, INC.**  
We Bring the Showroom to You!  
(414) 573-0105  
Proudly Serving Crusader Nation for over 25 years!  
Dan Taylor, Parish Member

**COURI**  
**INSURANCE**  
**AGENCY**  
*Protection for the Unexpected™*  
Coverages  
**IMPORTANT**  
Pricing  
**IMPORTANT**  
Low Costs  
**GREAT COVERAGES**  
Jerry & Judie Couri  
**262-548-8077 • couri.com**

**DON CULL EXCAVATING**  
W298 N9248 Center Oak Rd  
Septic & Mound Systems Grading  
**966-7038**  
MPRS 221589

**CCI**  
Corporate Contractors Inc.  
  
[CCIWI.COM](http://CCIWI.COM)

Angela Isherwood  
Owner & Luxury Travel Designer  
Parishioner  
**262.229.9271**  
[Angela@OliveAndAtlasTravel.com](mailto:Angela@OliveAndAtlasTravel.com)  
[www.OliveAndAtlasTravel.com](http://www.OliveAndAtlasTravel.com)

**ADT-Monitored Home Security**  
Get 24-Hour Protection From a Name You Can Trust  
• Burglary • Flood Detection  
• Fire Safety • Carbon Monoxide  
**833-287-3502**

**SUPPORT OUR**  
**ADVERTISERS!**

**PASTERNAK & ZIRGIBEL SC**  
FRANK PASTERNAK, PARISH MEMBER  
BEST LAWYERS IN AMERICA  
TOP 50 WISCONSIN SUPER LAWYERS  
BEST LAW FIRMS U.S. NEWS & WORLD REPORT  
(262) 785-0802 [injurywisconsin.com](http://injurywisconsin.com)

**OFFICE FURNITURE WAREHOUSE®**  
New & Preowned Office Furniture  
Design, Delivery, Installation, & Liquidation Services  
Elijah Walters (262) 719-8621  
[ofwgo.com](http://ofwgo.com)

**The GOOD DENTIST**  
Dr. Marta Ostromecki, DDS Parishioner  
(262) 223-3169  
[www.tgdentist.com](http://www.tgdentist.com)  
Always Accepting New Patients  
N67W28025 Sussex Rd., Suite 100, Hartland, WI

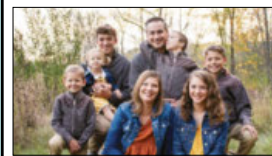


**PAUN Construction**  
Specializing in Masonry  
Residential & Commercial  
W300 N7741 Christine Ln., Hartland, WI 53029  
Robert J. Paun (262) 326-8043  
[www.paunconstruction.com](http://www.paunconstruction.com)  
[mail@paunconstruction.com](mailto:mail@paunconstruction.com)

**CITGO**  
**Station Hartland**  
Offering a variety of Pernat and Leroy Meats products  
Walk-in Beer cave  
301 E. Capitol Dr Hartland WI  
Mon-Sat: 5AM-10PM Sun: 6AM-9PM  
Stop in and ask about our Loyalty Program

**PLM**  
PAVING AND CONCRETE  
Parking Lot Maintenance, Inc.  
**262.691.3964** [www.plmpaving.com](http://www.plmpaving.com)

**What Will Be Your Legacy?**  
If you value your faith and your family, I welcome the opportunity to share my faith-based perspective in union with my financial experience in order to co-create a personal legacy strategy. I can assist with: Portfolio Management | Retirement Planning | Financial & Legacy Strategies | Special Needs Planning



**Kurt Maltby, CFP®, ChSNC®**  
CERTIFIED FINANCIAL PLANNER™  
Assistant Vice President, Financial Advisor

**Morgan Stanley**  
20975 Swenson Drive, Waukesha  
Phone: (262) 523-8303 | NMLS # 1504808  
[advisor.morganstanley.com/the-riverwood-wealth-management-group](http://advisor.morganstanley.com/the-riverwood-wealth-management-group)

Morgan Stanley and its Financial Advisors do not provide tax or legal advice. Individuals should seek advice based on their particular circumstances from an independent tax advisor. Morgan Stanley Smith Barney LLC. Member SIPC. CIRC818748 08/18

*Please Support these*  
**CONTRACTORS**  
*Thank You to these contractors helping St Charles grow!*

**NELCO ELECTRIC, INC.**  
GERMANTOWN, WI  
Commercial • Industrial • Residential  
24 Hour Service **262-502-9950**  
[WWW.NELCOELECTRIC.COM](http://WWW.NELCOELECTRIC.COM)  
Barb Jarchow Parishioner

**DFI MASINI, INC.**  
262 / 820-8300  
SEWER AND WATER CONTRACTOR  
WHEN YOU EXPECT THE BEST

**Wolf Electric LLC**  
Commercial, Industrial, Residential  
Garrett Wolf • Master Electrician/Parishioner  
Commercial • Industrial • Residential  
(414) 899-3608 • [www.wolfelectricllc.com](http://www.wolfelectricllc.com)

**SCOTT HEYERDAHL**  
Realtor®/Broker  
• Home & Condo Sales  
• Notary Public Services  
**262-719-6970**  
  
[scottHeyerdahl.firstweber.com](http://scottHeyerdahl.firstweber.com)

**FRONTIER**  
TITLE & CLOSING SERVICES  
1130 James Drive, Hartland, WI 53029  
Office: 262-361-4466 Fax: 262-361-4462  
[www.frontiertitlellc.com](http://www.frontiertitlellc.com)  
Frontier Title & Closing Services, LLC  
Lake Country's Most Experienced  
Title & Closing Company  
Specializing in Residential, Commercial  
& New Construction Transactions  
Serving the Real Estate Community!

Custom Asphalt Solutions Since 1941  
**WOLF PAVING**  
Parking Lots  
Private Roads  
Walking Paths  
Athletic Courts  
[wolfpaving.com](http://wolfpaving.com)

**zimmerman**  
ARCHITECTURAL STUDIOS, INC.  
400 Silver St. Verona Avenue  
Milwaukee, WI 53233 | [zimmerman.com](http://zimmerman.com)  
TELEPHONE (414) 876-9500  
FACSIMILE (414) 876-8584

**LET'S GROW YOUR BUSINESS**  
Place Your Ad Here and Support Our Parish!  
**CONTACT ME Jeff Tkachuk**  
[jtkachuk@4LPi.com](mailto:jtkachuk@4LPi.com) • (800) 950-9952 x2513