



*At St. Charles, all are invited to
meet Christ, know Christ,
love Christ and serve Christ.*

November 3, 2024

THIRTY-FIRST SUNDAY IN ORDINARY TIME



FEAST DAY OF **ST. CHARLES BORROMEO**

OUR PATRON SAINT

NOVEMBER 4

BIG WEEKEND AT ST. CHARLES!

This weekend, November 2nd and 3rd, we will be celebrating the Feast of St. Charles Borromeo. To help commemorate the occasion, we will be marking the return to the cup during communion at the 9:00 am Mass. All parishioners and guests are invited to join us for Fellowship Weekend after all of the Masses, and we will also be holding our school's annual Book Fair in the Borromeo Hall. Come and join in the excitement as we celebrate our growing parish!

St. Charles Parish & School | 313 Circle Drive, Hartland, WI 53029

262-367-0800 | www.stcharleshartland.com | email: parish@stcharleshartland.org



WELCOME TO ST. CHARLES - WE ARE HERE FOR YOU



PASTOR
Fr. Ken Omernick



ASSOCIATE PASTOR
Fr. Ariel Orozco

ST. CHARLES STAFF TEAMS

ASSOCIATE PASTOR & Becoming Fully Catholic:
Fr. Ariel Orozco, aorozco@stcharleshartland.org

TEACHING PARISH SEMINARIAN:
Timothy Heyrman, theyrman@sfs.edu

SCHOOL TEAM 262-367-2040
Principal/School Team Lead: Dan Garvey, Ext. 208,
dgarvey@stcharleshartland.org
School Administrative: Lisa Moehrke, Ext. 206,
school@stcharleshartland.org
School Administrative: Karen Dejewski, Ext. 206,
kdejewski@stcharleshartland.org
School Administrative: Nina Wolf, Ext. 206,
nwolf@stcharleshartland.org
School Administrative: Cindy Hince, Ext. 206,
chinca@stcharleshartland.org

WORSHIP TEAM
Worship Lead: Peg Kasun, Ext. 225,
pkasun@stcharleshartland.org
Music Director: Dr. Aaron Mathews, Ext. 205,
amathews@stcharleshartland.org
Liturgist: Elizabeth Thompson, M.Div., 262-367-6704
ethompson@stcharleshartland.org
Liturgy Team Member: Jacqueline Bernard, Ext. 205
jbernard@stcharleshartland.org
Wedding Coordinator: Dee Anne Hamer, Ext. 215,
dhamer@stcharleshartland.org

DISCIPLESHIP TEAM
Adult Discipleship Lead: Maria Notch, Ext. 220,
mnotch@stcharleshartland.org
Children's Discipleship Lead: Shelly Buchan, Ext. 221,
sbuchan@stcharleshartland.org
Student Discipleship Lead: Bri Alexander, Ext. 209,
balexander@stcharleshartland.org
Baptism Coordinator: Mary Jo Romportl, Ext. 200,
mjromportl@stcharleshartland.org

OPERATIONS TEAM

Operations Manager: Mike Cattani, Ext. 210,
mcattani@stcharleshartland.org
Maintenance Manager: Tim Orzechowski, Ext. 217,
torzechowski@stcharleshartland.org
Accounting: Dee Anne Hamer, Ext. 215,
dhamer@stcharleshartland.org
Phase III Cornerstone: Brenda Zingsheim, Ext. 215,
bzingsheim@stcharleshartland.org
Safeguarding: Karen Dejewski, Ext. 206,
kdejewski@stcharleshartland.org

COMMUNICATIONS & STEWARDSHIP TEAM

Communications & Stewardship Team Lead: Allison Caswell,
Ext. 202, acaswell@stcharleshartland.org
Assistant to the Pastor: Terrie Carew, Ext. 224,
tcarew@stcharleshartland.org
Graphic Design Specialist: Renee Krier, Ext. 224,
rkrier@stcharleshartland.org
Administrative: Kathy Gillstrom, Ext. 200,
kgillstrom@stcharleshartland.org
Administrative: Mary Jo Romportl, Ext. 200,
mjromportl@stcharleshartland.org

PARISH OFFICE: 262-367-0800,
Mon. - Fri., 8 am - 4 pm
EMAIL US: parish@stcharleshartland.org

PARISH SCHOOL: 262-367-2040
school@stcharleshartland.org



WEBSITE & LIVESTREAM:
www.stcharleshartland.com
or scan QR code
with phone camera

WELCOME TO ST. CHARLES - WE ARE HERE FOR YOU

SATURDAY MASS OF ANTICIPATION: 5:00pm

SUNDAY MASS TIMES: 7:00am, 9:00am, 11:00am & 6:00pm

WEEKDAY MASS: Monday - Friday: 8:30am & Saturday: 8:30am

EUCCHARISTIC ADORATION

We offer Adoration from Mondays at 5:00 a.m. through Friday evenings at midnight.

For current openings, scan QR code.



RECONCILIATION

Saturdays: 9:30am - 10:30am & Thursdays: 5:00pm - 6:00pm

Please arrive within 30 minutes of the start time.

We have one Priest on Saturdays and two Priests on Thursdays.

SACRAMENT OF THE SICK/ ANOINTING MASSES

Sacrament of the Sick Masses are the 2nd and 4th FRIDAYS of every month or by appointment with Fr. Ken or Fr. Ariel (call the Parish Office).

OUTREACH SERVICES TEAM: Terri Blazek: 262-367-7608, jtblazek@wi.rr.com

TO ASK FOR PRAYERS or to be added to the email list, please email: prayernetwork@stcharleshartland.org

FOR EMERGENCY PRAYERS, please email:

emergencyprayers@stcharleshartland.org

Printed weekly prayer sheets are available on the information wall.

ST. VINCENT DE PAUL: if you need food, shelter or assistance call 262-367-0800 (Parish Office)

NEED HOME COMMUNION:

For information call 262-367-0800 (Parish Office)

Mass Intentions for the Week of November 3rd



Sunday, November 3 ~ Feast Weekend of St. Charles Borromeo

7:00 am † David Leaman

9:00 am † Holly Sanger

11:00 am † Janeway Riley

6:00 pm Living and Deceased Members of St. Charles

Monday, November 4 ~ Feast Day of St. Charles Borromeo

8:30 am † Joan Benoit

Tuesday, November 5

8:30 am Special Intention

Wednesday, November 6

8:30 am Special Intention

Thursday, November 7

9:00 am † Robert Rydzewski

Friday, November 8

8:30 am † Frank Furey & Kathie Henkel

Saturday, November 9

8:30 am † Louise & W. Joseph Weigel

5:00 pm Living and Deceased Members of St. Charles

Sunday, November 10

7:00 am † Judith Couri

9:00 am † Martin Melotik

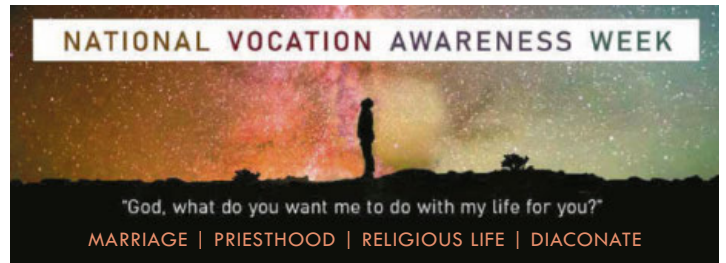
11:00 am † Paul Piotrowski

6:00 pm Special Intention



WEDDING BANNS

3rd Bann ~ Agata Kosek & Michael Ruka



One of the easiest ways to support St. Charles Parish and School is through the secured online e-giving system.



PARISH SUPPORT
THRU OCTOBER 6TH

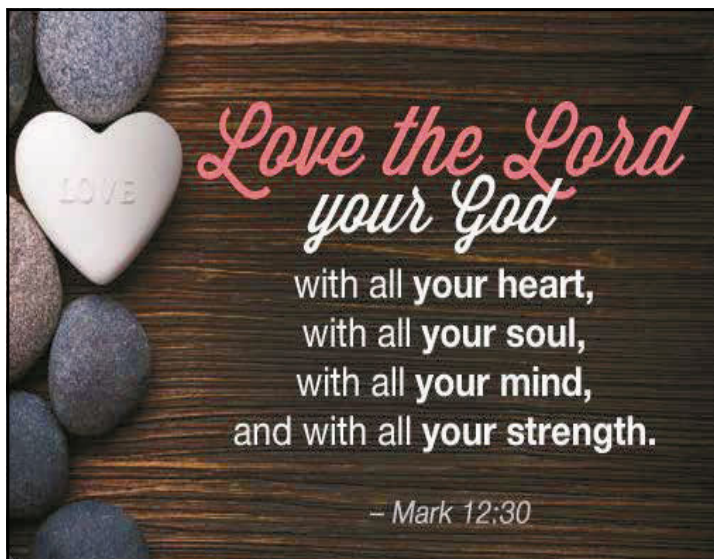
FISCAL YEAR
JULY 1 THRU JUNE 30

2024 - 2025

| | |
|---------------------|--------------|
| Envelopes..... | \$24,306.70 |
| Offertory..... | \$2,868.85 |
| Weekend Total | \$27,175.55 |
| E-Giving..... | \$14,805.84 |
| YTD | \$715,465.41 |

2023 - 2024

| | |
|---------------------|--------------|
| Envelopes..... | \$21,394.28 |
| Offertory..... | \$2,579.41 |
| Weekend Total | \$23,973.69 |
| E-Giving..... | \$10,670.60 |
| YTD | \$617,793.42 |



THIS WEEKEND'S GOSPEL MEDITATION

31ST SUNDAY IN ORDINARY TIME

Americans have long been fascinated with public debates. Farmers stood in muddy fields for hours to hear Lincoln and Douglas dispute each other in the 1860 presidential run-up. The televised debate between Kennedy and Nixon in 1960 fascinated the nation. These days, cable news outlets and social media parse every word spoken by candidates. We still love seeing public, rational disputes in the service of our nation.

In his day, Jesus also captured attention as a public debater. Mark tells us, "And one of the scribes came up and heard them disputing with one another, and seeing that he answered them well, asked him, 'Which commandment is the first of all?'" Jesus' brief but all-encompassing response is the double command to love God and neighbor. Notice that he includes the importance of loving God with "all your mind." Loving God is not simply a question of affection, loyalty, good deeds, and religious dedication. It demands honest and intense intellectual engagement — just like an accomplished debater.

How do we do this practically? One simple way is by embracing ourselves as life-long learners. Setting aside time for reading, book studies, online classes, and, perhaps most difficult, engaging in open, honest, and curious conversation with those who think differently from us. These are all great ways to love God with our minds. Our country and our Church depend greatly on souls who love God in this way with their minds. Let's commit to loving God with all our minds in tireless pursuit of truth.

— Father John Muir

©LPi

PRAY WITH SCRIPTURE

Lectio Divina

15 minutes each day spent in God's presence — reading, reflecting, responding and resting with his Word — adds up to 90 hours in one year. That is time well spent and a testimony to how a little at a time turns into something remarkable!

Sunday, November 10th Readings

1 Kgs 17:10-16/Ps 146:7, 8-9, 9-10 (1b)/Heb 9:24-28/
Mk 12:38-44 or 12:41-44

To find readings for the weekdays and/or Feast Days, please visit
<https://bible.usccb.org/bible/readings>.

Reflection questions for Sunday, November 10th

- We hear how the Lord spared the widow and her son from starvation and death in the days of the prophet Elijah. How do you think society can best help those on the margins who are really struggling?
- Hebrews teaches us that Jesus's death took away the sins of many and that at his Second Coming, Jesus will bring eternal salvation to all believers. When do you imagine Jesus will return?
- Jesus praises the widow who gives to the poor despite her own poverty. Do you have family or friends who likewise selflessly give to others?

READ. REFLECT. RESPOND. REST.



Cut out and keep in your Bible for reference!





TUESDAY MORNING BREAKFAST GROUP

All parishioners are welcome to attend a Tuesday Morning Breakfast after the 8:30am morning Mass on the 4th Tuesday of every month. The first breakfast will be held on Tuesday, November 26th. Breakfast is served, free of charge, so that men and women can gather to socialize and grow in friendship and faith. Email Dianne Merkel with any questions: diannemerkel@gmail.com. We hope to see you there!



THE GIFT OF PRAYER

One of the most powerful ways that we can support one another, especially during this time of year, is through prayer. The best part about prayer is that other people can pray for your needs!

If you would like to be a prayer warrior, **printed weekly prayer sheets are available on the information wall by the Parish Office.** If you have prayer requests, please send an email to prayernetwork@stcharleshartland.org. If you are in need of immediate prayers, please don't hesitate to email emergencyprayers@stcharleshartland.org or contact the Parish Office at 262-367-0800.

SHARE YOUR LOVE OF THE EUCHARIST



Eucharistic ministers are needed to bring JESUS to Heritage Lake Country, a senior living facility. This would only require a two-hour commitment on a Tuesday morning per month. Training is provided, and you will be paired up with

another Eucharistic minister. If you feel called to serve in this gratifying ministry, please contact the Parish Office at 262-367-0800. Thank you!



Outreach Services Team will be hosting the Fellowship Weekend in the **new Borromeo Hall after all Masses this weekend, November 2 and 3.** They will be selling the new parish cookbook and new gift items made by the sewing cooperative of ladies in the Dominican Republic at our international sister parish of La Sagrada Familia. Members will be available to talk more about the St. Charles Outreach Service Team and the many people they help through their ministry.

BULLETIN DUE DATES!

If you have an event(s) you would like to publicize in a November, December and/or January bulletin, please submit your information by the due dates listed below. This earlier deadline is due to the printer's holiday schedule. **Please submit all articles by 8:00 am on the due date.** Thank you!

- Nov. 24th Bulletin information is due Wednesday, Nov. 13th
- Dec. 1st Bulletin information is due Monday, Nov. 18th
- Dec. 8th Bulletin information is due Monday, Nov. 25th
- Dec. 15th Bulletin information is due Monday, Dec. 2nd
- Dec. 22nd Bulletin information is due Monday, Dec. 9th
- Dec. 29th Bulletin information is due Monday, Dec. 16th
- Jan. 5th Bulletin information is due Wednesday, Dec. 18th
- Jan. 26th Bulletin information is due Wednesday, Jan. 15th



Bulletin Advertisers of the Week

Please support our advertisers!



OFFICE FURNITURE WAREHOUSE®

New & Preowned Office Furniture

Design, Delivery, Installation, & Liquidation Services

Elijah Walters (262)719-8621

ofwgo.com

St. Charles HSA Presents Bag Toss Showdown



Saturday, November 16
6:30-9:00pm in Borromeo Hall



Show off your bag toss skills! Other games will happen simultaneously for those knocked out of the bracket early or spectators that catch the competitive spirit! All proceeds will benefit St. Charles School. Light snacks will be provided. BYOB.

\$25 per team registration

\$10 per spectator

Payment and registration due to the Parish or School Office by
Friday, Nov. 8 to guarantee a spot on the bracket!



Our Literati Book Fair is coming soon! School students will be able to visit the fair and purchase items on November 1st, 4th, 6th and 7th, and parents are welcome to shop during Parent/Teacher Conferences on the 4th & 5th by the school library.

The Book Fair will also be open before and after all Masses on Saturday, November 2 and Sunday, November 3 in the Borromeo Hall. This is a great opportunity for parishioners to start Christmas shopping while supporting our school!

For more information and/or to check out the online store, please visit the News story on our website.



SCHOOL JINGLE SHOP

We are excited to announce that the Jingle Shop will be returning to our school this year on Wednesday, December 4! The Jingle Shop is a favorite fundraiser of the students that allows them to purchase gifts for their family at Christmas. We are collecting small, new items for the kids to choose from. We are also in need of gift wrapping materials (wrapping paper, gift bags, tissue paper, ribbons, and tape) as well as plastic bags (Sendik's, Piggly Wiggly, etc.). Cash donations are being accepted for the purchase of items for the Jingle Shop. Proceeds from this year's shop will go toward improving our Tot Lot area near the preschool classrooms. We are accepting donations through Tuesday, November 26 in our Parish and School Offices. Thank you for supporting our school!

CIRCLE OF LOVE

This past month, several of you wrote wish lists for those in need in our parish community for the Circle of Love Christmas Gift Giving. **TODAY**, everyone has a chance to be a Giver... a "Secret Santa" by taking a tag off the Miracle Tree located in the church Narthex. Please follow the directions attached to the tag. **Bring your wrapped gift back on or before Sunday, December 1st by noon.** By doing so, you will make Christmas brighter for a person or family in need!

If you have any questions or would like to volunteer, please contact Debbie Lancour at 262-367-3869 or d2lancour@yahoo.com.



LAKE COUNTRY BREAD OF LIFE COMMUNITY MEAL AT ST. CHARLES

St. Charles Parish is the home for the Lake Country Bread of Life Community Meal. What began as a meal for the needy in our area has turned into a host program that includes seniors and others in need of a good meal and friendship. If you or someone you know could use some fellowship and a good healthy meal, please invite them to join us **Thursday, November 21st at 5:30 pm in the Borromeo Hall. The meal will be hosted by the St. Charles Garden Club, and they prepare a traditional Thanksgiving meal.** We also offer blood pressure readings before the meal.

St. Charles Outreach Services Team oversees the event. If you would like to volunteer or have questions, please contact the Parish Office or humanconcerns@stcharleshartland.org.



ST. CHARLES NIGHT AT CULVER'S IN HARTLAND

Monday, November 4th from 5:00-8:00 pm

Mention that you are with St. Charles, and the School receives 10% of the evening's sales! Thanks for your support!

ST. VINCENT de PAUL SOCIETY



FOOD PANTRY NEEDS: Kleenex, Pancake Mix, Mustard, Variety of Progresso or Campbell's Chunky Chicken Soups (NOT CHICKEN NOODLE PLEASE), Cranberry Sauce, Fruit Juice

In Sunday's Gospel on the Thirty-First Sunday in Ordinary Time, Jesus tells us: "You shall love the Lord your God with all your heart, with all your soul, with all our mind and with all your strength... and you shall love your neighbor as yourself." Through your gifts of food for the St. Charles SVDP Pantry and monetary donations to our general fund, you can show your love for our Lord and your love for your neighbor who is hungry, alone and in need.

A special thank you to the St. Charles Home and School Trunk or Treat Event and all those who participated for their generous donations of food, paper products, cleaning items and assorted items for our SVDP Pantry. You truly show your love for your neighbor by helping us feed the hungry.

Is there a neighbor or friend of yours who is in temporary need because of a loss of job or an illness? Please contact the St. Charles SVDP at 262-367-0800. The St. Charles SVDP Food Pantry is located at 229 Lawn Street, Hartland and it is open Tuesday mornings between 10am and noon. It is also open on the second and fourth Tuesday evenings of the month between 5:30pm and 7pm.





Are you feeling called to serve in a ministerial setting? St. Charles Parish is responding to our incredible growth by seeking faith-filled, missionary disciples to join our AMAZING parish staff!

- **Full-time Maintenance** role to ensure the building and grounds are properly prepared to support our parishioners during the busiest times of the week - evenings and weekends.
- **Director of Finance** to lead and manage our parish finance and accounting ministry. This is an exceptional opportunity for an accomplished finance professional to work in a faith-filled environment. Perhaps you are looking to shift your career from the demands of the corporate sector? Have you or someone you know recently retired but are searching to make a fulfilling and purposeful contribution? Maybe you are looking to re-enter your career and are searching for a meaningful opportunity? We are seeking a seasoned, professional team member to lead our finance department, collaborating with our growing parish ministries and engaged community. Our Director of Finance is a full-time position offering a flexible work schedule to support family or personal needs. This position can be configured into a part-time commitment for the right candidate.
- **Full-time and part-time opportunities** supporting formation and sacramental preparation from baptism through confirmation and beyond. Is your heart on fire with the Lord to participate in the sacramental life of the church? Are you in a small group and feeling called to ministry? We have several beautiful opportunities awaiting the right person to leverage their transferable skills and walk with families in sacramental preparation, Catechesis of the Good Shepherd, youth formation, middle school EDGE, high school LifeTeen, retreats, small groups, and much much more!

Benefits are heavenly! Staff retreats, Adoration, generous PTO, available healthcare insurance and pension plan. If you or someone you know is interested in learning more, please check our website or email Michelle Wick, Interim Human Resources, directly at mwick@stcharleshartland.org.



TEACHING SUBS NEEDED

St. Charles Parish School is in need of substitute teachers! Candidates must complete Safe Environment training through the Archdiocese of Milwaukee, and they must also have a bachelor's degree and a valid teaching license and/or a substitute teaching license. The process of acquiring a substitute teaching license is easy. Please contact the School Office at 262-367-2040 if you are interested!



BE A LIFE TEEN CORE TEAM MEMBER

Are you looking for a way to be involved at St. Charles? Consider joining the Lake Country Life Teen Core Team. This relational ministry provides an opportunity to walk with middle and high school teens on their faith journey. To learn more about the Core Team, please contact Bri Alexander at balexander@stcharleshartland.org.



YOU MAKE THE DIFFERENCE!

As part of being a Catholic, we are called to be good Stewards. Stewardship in a congregation is the sense of community and service adopted when parishioners do tasks for each other for the sake of the love for their neighbor and love of Christ. It is the application of what Christ taught us, to leave each other as He loved us. This could mean financial support or giving of one's time to our parish or greater community as a volunteer. We are always in need of volunteers for our different ministries and are hoping you can help serve not only our parish but also your fellow parishioners in various ways. Please visit the Volunteer Page on our website for a listing of the different ministries we have at St. Charles as well as what specific needs each ministry has. We are so grateful for your time and talents!

Newsletter Date: November 2024

Worship Team News



November Audio Technology Training

Because your Mass experience is important to us.

St. Charles is happy to announce our first Audio Technology Training Tuesday, November 12, 2024 after daily mass and Mary of Perpetual Help devotion starting at 10:00am, and Sunday, November 17, 2024 after 9:00 AM mass starting at 10:15 AM in the Borromeo Hall. Donuts and light refreshments will be provided. At the end of the session, we will walk to the church to allow attendees to experience the audio difference.

Purpose: The purpose of this training is to educate our staff, parishioners, and guests on how to maximize their mass experience with assisted audio technology. We will deem the session successful if each participant increases their confidence in using our audio resources to use next mass.

Vision: The vision is to empower self-service through the training, and increase long-term audio satisfaction.

Agenda: During the training, members of our St. Charles staff will share a step-by-step tutorial of how to connect to our St. Charles Wi-Fi for Assisted Listening (STC-ALS), download the WaveCAST app, and check-out St. Charles provided audio devices and headphones prior to mass.

What to Bring:

Bring Your Own Device: If you plan on using your own smartphone, we ask you also bring your own headphones, ear buds, or hearing aids to the training. See your local wireless carrier for aligned products.

Borrow St. Charles Device and Headphones: If you plan to borrow a listening device and headphones, we will have a limited number available at



the training on a first come, first serve basis.

Lecture-Format: To respect everyone's time, the training will be a lecture format. Please save any individual questions for the Google Feedback Form.

Google Forms:

Your voice matters. Tell us about your training experience. Submit your feedback via the Google via the QR code located in the right column of this flyer.

Gratitude: We thank you for the opportunity to improve your mass experience with our audio training and resources.



Maximize your St. Charles listening experience :

- > **Bring your own device (BYOD):** Connect to St. Charles-ALS Wi-Fi. Download the WaveCAST app on iOS and Android smartphones, plug in your earbuds, headset, or hearing aids from home.
- > **Borrow a device and headset:** Arrive to Mass early, connect with staff member or usher to borrow St. Charles' audio devices with headphones from the Usher Room.
- > **Attend the November Audio Technology training!**

St. Charles Audio Testimonials

What are parishioners are saying:

Testimonial #1:

As a daily mass goer, I wear hearing aids. When I learned about the WaveCAST app, my mass experience improved tremendously. It was simple, I connected to the specific Wifi,-ALS downloaded the WaveCAST app, and I could hear so much better!
—Anonymous

Testimonial #2:

In the last two weeks, I have noticed a huge improvement in sound quality. With the recent updates to the sound system, my WaveCAST app and hearing aids are clear as a whistle. The St. Charles Staff and volunteers have done a great job helping us folks with hearing aids. —Dale S.

Testimonial #3:

We borrowed the St. Charles audio devices and headphones for the first time at the 6 o'clock evening mass. A helpful usher assisted us in getting plugged in. We could hear! Thank you.
—Anonymous couple

Your feedback is important to us!

After the training, take the survey. Scan the QR code below.

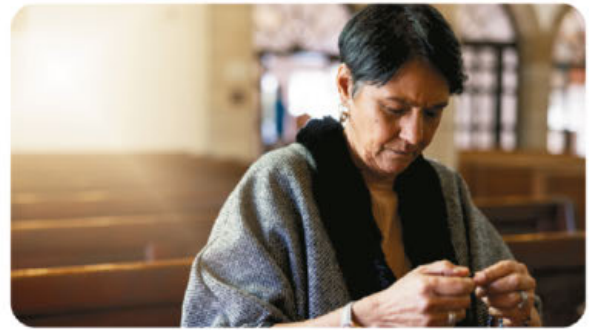


End of Life Planning

Now and at the Hour of Our Death

A PASTORAL LETTER FROM THE ROMAN CATHOLIC BISHOPS
OF WISCONSIN ON END OF LIFE DECISIONS

We have published the 4th edition of our pastoral letter, *Now and at the Hour of Our Death*, to share the Church's moral guidance and helpful resources to help prepare for the end of life and relieve some of the pain, sadness, and anxiety that dying entails. The letter includes Church teaching on a wide variety of issues at the end of life, including:



- Assisted Suicide & Euthanasia
- Ordinary & Extraordinary Measures
- Measures Withheld or Withdrawn
- Nutrition & Hydration
- Palliative Care & Hospice
- Pain Management
- Redemptive Suffering
- Organ Donation
- Spiritual & Sacramental Needs
- Funeral Planning
- Advance Care Planning
- Power of Attorney for Health Care
- Living Wills & POLST
- Burial & Cremation
- Alkaline Hydrolysis
- Human Composting

To assist in end of life planning, we also offer free legal forms, including the **Catholic Authorization for Final Disposition** and **Addenda to the Power of Attorney for Health Care**.

READ *the* FULL LETTER

Scan the QR code or visit wisconsincatholic.org/endoflife for links to the pastoral letter, resources, legal forms, and diocesan contacts.



WISCONSIN CATHOLIC CONFERENCE
106 E Doty St • Ste 300 • Madison, WI 53703
Phone 608-257-0004 • Email office@wisconsincatholic.org • Web wisconsincatholic.org



Ground Crew Service

Full Service Landscape Management

262.821.9680

www.groundcrewservice.com

Hartland Terrace Assisted Living

- RN Lead 24-Hour Elite Care Team
- Full Continuum of Care • Memory Care
- All Inclusive Pricing • Private Studios
- Family Centered Care Model

327 North Avenue • Hartland | 262-369-4391
www.hartlandterrace.com

TODD WANGERIN ELECTRIC, Inc.

Free Estimates - Licensed - Insured
Over 20 years experience
Todd Wangerin 262-719-4411
twelectric4411@att.net

7 Day Free Trial

- Personal Training Call or text Ryan Zingsheim 262-527-5880
- Group Fitness
- Open Gym
- And more!

RYZING FITNESS Founded by parish alumni



Rick Kalscheuer
Parish Member
Tom McInerney
Jon Budzien
MyKnowledgeBroker.com
800.566.7007
we know.

Holzhauser, Hewett & Barta S.C.
Orthodontic Care For Children And Adults

Daniel Holzhauser DDS MS | Charles Hewett DDS MS | Joshua Barta DDS MS | Benjamin Schneider DDS MS
520 Hartbrook Dr., Hartland 262-367-7076
2090 Continental Dr., West Bend 262-306-0600
10225 W. Capitol Dr., Wauwatosa 414-463-5700

www.hhortho.com

IF YOU LIVE ALONE

MDMedAlert!

✓ Ambulance/Police
✓ Family/Friends
✓ GPS & Fall Alert

As Low As **\$19⁹⁵** mo.

CALL NOW!

800.808.9294 md-medalert.com



FREE AD DESIGN
with purchase of this space
CALL 800-477-4574

Join our Team!

Serve your local Catholic Community, become an agent with the Knights of Columbus!

Contact us at www.kofcwi.org

Life Insurance • Disability Income Insurance
Long Term Insurance • Retirement Annuities

Tim J. Nowak, FICF
General Agent
(920) 810-6188
timothy.nowak@kofc.org



KOWAL INVESTMENT GROUP

> The Retirement Specialists

Aaron T. Kowal, CFP®

W238N1660 Busse Rd., Ste. 100, Waukesha, WI 53188
262-522-4040

www.kowalinvestmentgroup.com

Kowal Investment Group, LLC ("Kowal") is a Registered Investment Advisor ("RIA"), with the U.S. Securities and Exchange Commission ("SEC"). Kowal provides investment advisory and related services for clients in State of Wisconsin and other states.

Call us to schedule your free, no obligation, financial check-up today.

BUNZEL'S OLD FASHIONED MEAT MARKET

Fresh Custom Cut Choice Meats
Party Trays • Catering

Thank You For Supporting A Family Tradition

9015 W. BURLEIGH 873-7960

www.bunzelmeats.com

FOOT & ANKLE
Associates of Wisconsin
Parish Member
Dr. Amy Galati
Call: (262) 542-3779
www.footandanklewi.com

DOES YOUR NONPROFIT ORGANIZATION NEED A NEWSLETTER?

Engaging, ad-supported print and digital newsletters to reach your community.

Visit lpicommunities.com

OUR COMMUNITY NEWSLETTER
6th Edition

Scan to contact us!

Culver's
701 Industrial Ct., Hartland
262-367-5800

TOWN BANK
A WINTRUST COMMUNITY BANK
800-433-3076
www.townbank.us

Palmer's STEAKHOUSE
www.Palmerssteakhouse.com
122 E. Capitol Dr. • Hartland, WI
262-369-3939

catholicmatch® Wisconsin

CatholicMatch.com/WI

VISU-SEWER, INC.
262-695-2340
Professional Sewer Inspection, Maintenance and Rehabilitation Services
Parish Members
www.visu-sewer.com

FALBO PIZZERIA
Carry Out ~ Delivery ~ Catering
262-367-2700 | FalboPizza.com
Pizzas • Subs • Salads • Appetizers
Located on 418 Merton Avenue off Hwy 16 in Hartland

CHARLES SCHOOL
St. Charles School... We choose Christ in learning, living, & values in the light of our faith.
262-367-2040
www.stcharlesschoolhartland.com

JENSON MOTORS Auto - Truck Repair
Hours: Mon-Fri 7:30-5:30
Proprietor: Guy Jenson
262-367-5556
364 Cottonwood Ave., Hartland, WI

WE APPRECIATE OUR ADVERTISERS!

Compliments of:
Boehme & Taylor, CPAs

LAKESIDE INTERNATIONAL TRUCKS **BADGERLAND IDEALEASE** **Bill Reilly, Jr. Parish Member**

Offering Wisconsin businesses transportation solutions nearly 40 years.

- Truck Sales
- Parts
- Service
- Body Shop
- Leasing & Rental

SERVING: Milwaukee • Madison • Racine
West Bend • Sheboygan • Janesville • Monroe • Rockford

EVERT-LUKO FUNERAL HOME & CREMATION SERVICES

Guiding with skillful hands and soulful hearts

262-367-2156
www.evertlukofuneralhome.com

PROMACH Performance. Packaged.

CL&D **\$2,000 RETENTION BONUS IN THE FIRST YEAR!**
\$20+/HOUR
cldgraphics.com/careers

KLINK'S KARPETS, INC.
Hartland's Floor Covering Center
Family Owned & Operated for over 47 Years
Carpeting & Hard Surfaces
107 North Ave. Hartland, WI
367-4670 Parish Member

We help real estate investors invest in passive assets and defer tax.
If you are planning on selling your investment property, let's talk.



DAVE PERRY
heating • cooling
Proudly Serving the Lake Country Area for more than 20 years
Heating • Air Conditioning • Geothermal
New Construction • Replacement
262.966.1959
www.daveperryheatingandcooling.com

INSIGHT INVESTMENT ADVISORS
BRANDON BRUCKMAN
414-882-8738
www.investwithinsight.com

Broaching Technologies
Machines • Tooling • Subcontracting
Blind and Thru Hole: www.keyway-spline-broaching.com
Broaching, Splining, Keyseating, P (262) 820-1200
Slotting, Shaping sales@broachingtech.com

Generations DENTAL
Jim Muenzenberger, D.D.S.
and Kelly Newman, D.D.S.
Parish Members
139 E. Capitol Dr. Hartland, WI 53029
Office 262-367-2750
GenerationsDentalHartland.com

Sprung Heating & Pump Service LLC
HVAC • PLUMBING • WELL PUMPS • GENERATORS
PO BOX 3024 • MERTON, WI 53056
262-538-1400
www.sprungheating.com

Lake Country Eye Care
580 Hartbrook Dr. • Hartland, WI
Amber A. Dentz, OD - Parishioner
www.lakecountryeyecare.com
262-367-6610

CMC
For All Your Remodeling Needs!
KITCHEN & BATH REMODELING
COMPLETE HANDYMAN SERVICES
JIM FISCHER
fischerjames29@gmail.com
414-614-7329



For ad info. call 1-800-950-9952 • www.4lpi.com

St. Charles Catholic Church, Hartland, WI

B 4C 01-0639

Helping you achieve financial dreams



James Dunn
Managing Director – Financial Advisor
(262) 395-1101
www.dunninvestmentmanagement.com



Lake Five
LANDSCAPE SUPPLY LLC
Mulch • Firewood • Nursery
262-777-1523
W275N7813 Lake Five Rd Hartland, WI
LakeFiveSupply.com



Brenna Fischer
Hairstylist
262-844-5934
601 Ryan St., Ste 302
PEWAUKEE WI
brennafischer.glossgenius.com

REICHL & KOLSTAD
ORTHODONTICS

Dr. Peter Reichl & Dr. James Kolstad
look forward to meeting you!

Offering Traditional Braces & Invisalign
Located in Waukesha,
Mukwonago & Hartland
262-547-2827
www.ReichlKolstadOrtho.com

WISE
DESIGN BUILDERS
262-790-4444
Parish Members
www.wisedesignbuilders.com

Lake Country Remodeling Specialist

Neon Nini
A Tween Clothing & Accessories Store in Downtown Hartland
303 Cottonwood Ave, Hartland
PARISH MEMBER
Follow Us For Trends and Information

CARPET PLUS, INC.
We Bring the Showroom to You!
(414) 573-0105
Proudly Serving Crusader Nation for over 25 years!
Dan Taylor, Parish Member

COURI INSURANCE AGENCY
Protection for the Unexpected™

**Coverages
IMPORTANT
Pricing
IMPORTANT
Low Costs
GREAT COVERAGES**

Jerry & Judie Couri
262-548-8077 • couri.com

DON CULL EXCAVATING
W298 N9248 Center Oak Rd
Septic & Mound Systems Grading
966-7038
MPRS 221589

CCCI
Corporate Contractors Inc.
CCIWI.COM

Angela Isherwood
Owner & Luxury Travel Designer
Parishioner
262.229.9271
Angela@OliveAndAtlasTravel.com
www.OliveAndAtlasTravel.com

SUPPORT OUR ADVERTISERS!

PASTERNAK & ZIRGIBEL S.C.
FRANK PASTERNAK, PARISH MEMBER
BEST LAWYERS IN AMERICA
BEST LAW FIRMS U.S. NEWS & WORLD REPORT
TOP 25 MILWAUKEE & TOP 50 WISCONSIN SUPER LAWYERS
(262) 785-0802 injurywisconsin.com

OFFICE FURNITURE WAREHOUSE®
New & Preowned Office Furniture
Design, Delivery, Installation, & Liquidation Services
Elijah Walters (262) 719-8621
ofwgo.com

The GOOD DENTIST
Dr. Marta Ostromecki, DDS Parishioner
(262) 223-3169
www.tgdentist.com
Always Accepting New Patients
N67W28025 Sussex Rd., Suite 100, Hartland, WI



PAUN Construction
Specializing in Masonry Residential & Commercial
W300 N7741 Christine Ln., Hartland, WI 53029
Robert J. Paun (262) 326-8043
www.paunconstruction.com
mail@paunconstruction.com

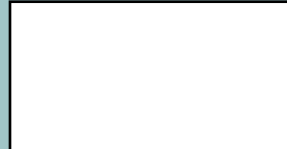
CITGO
Station Hartland
Offering a variety of Pernat and Leroy Meats products
Walk-in Beer cave
301 E. Capitol Dr Hartland WI
Mon-Sat: 5AM-10PM Sun: 6AM-9PM
Stop in and ask about our Loyalty Program

PLM
PAVING AND CONCRETE
Parking Lot Maintenance, Inc.
262.691.3964 www.plmpaving.com

Wolf Electric LLC
Commercial, Industrial, Residential
Garrett Wolf • Master Electrician/Parishioner
Commercial • Industrial • Residential
(414) 899-3608 • www.wolfelectricalllc.com

SCOTT HEYERDAHL
Realtor®/Broker
• Home & Condo Sales
• Notary Public Services
262-719-6970
FIRST WEBER REALTY
scottHeyerdahl.firstweber.com

Please Support these
CONTRACTORS
Thank You to these contractors helping St Charles grow!



FRONTIER
TITLE & CLOSING SERVICES
1130 James Drive, Hartland, WI 53029
Office: 262-361-4466 Fax: 262-361-4462
www.frontiertitlellc.com

Frontier Title & Closing Services, LLC
Lake Country's Most Experienced Title & Closing Company
Specializing in Residential, Commercial & New Construction Transactions
Serving the Real Estate Community!

NELCO ELECTRIC, INC.
GERMANTOWN, WI
Commercial • Industrial • Residential
24 Hour Service **262-502-9950**
WWW.NELCOELECTRIC.COM
Barb Jarchow Parishioner

Custom Asphalt Solutions Since 1941
WOLF PAVING
Parking Lots
Private Roads
Walking Paths
Athletic Courts
wolfpaving.com

DR. OMASINI, INC.
CONTRACTORS
262 / 820-8300
WHEN YOU EXPECT THE BEST

zimmerman
ARCHITECTURAL STUDIOS, INC.
200 Silver Mt. Vernon Avenue
Milwaukee, WI 53217 • zimmerman.com
TELEPHONE (414) 475-9900
FAX (414) 475-9584

What Will Be Your Legacy?
If you value your faith and your family, I welcome the opportunity to share my faith-based perspective in union with my financial experience in order to co-create a personal legacy strategy. I can assist with: Portfolio Management | Retirement Planning | Financial & Legacy Strategies | Special Needs Planning

Kurt Maltby, CFP®, CHsNC®
CERTIFIED FINANCIAL PLANNER™
Assistant Vice President, Financial Advisor

Morgan Stanley
20975 Swenson Drive, Waukesha
Phone: (262) 523-8303 | NMLS # 1504808
advisor.morganstanley.com/the-riverwood-wealth-management-group

Morgan Stanley and its Financial Advisors do not provide tax or legal advice. Individuals should seek advice based on their particular circumstances from an independent tax advisor. Morgan Stanley Smith Barney LLC. Member SIPC. CRC281548 08/18