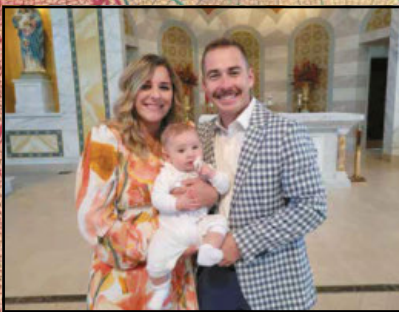


November 17, 2024
THIRTY-THIRD SUNDAY IN ORDINARY TIME

Sacrament of Baptism



Hudson James B.,
son of Ty and Jamie B.



Leo James L.,
son of Charles and Megan L.



James William W.,
son of Kyle and Audrey W.



Lenora Carolyn P.,
daughter of Douglas and Morgan P.



Aimee Mae R.,
daughter of Benjamin and Ashley R.



Paul Michael V.,
son of John and Annemarie V.



Thomas Edward O'Keefe F.,
son of Noah and Gabrielle F.

*Congratulations to all our newest St.
Charles Parish members and their families!*

WELCOME TO ST. CHARLES - WE ARE HERE FOR YOU



PASTOR
Fr. Ken Omernick



ASSOCIATE PASTOR
Fr. Ariel Orozco

ST. CHARLES STAFF TEAMS

ASSOCIATE PASTOR & Becoming Fully Catholic:
Fr. Ariel Orozco, aorozco@stcharleshartland.org

TEACHING PARISH SEMINARIAN:
Timothy Heyrman, theyrman@sfs.edu

SCHOOL TEAM 262-367-2040
Principal/School Team Lead: Dan Garvey, Ext. 208,
dgarvey@stcharleshartland.org
School Administrative: Lisa Moehrke, Ext. 206,
school@stcharleshartland.org
School Administrative: Karen Dejewski, Ext. 206,
kdejewski@stcharleshartland.org
School Administrative: Nina Wolf, Ext. 206,
nwolf@stcharleshartland.org
School Administrative: Cindy Hince, Ext. 206,
chinca@stcharleshartland.org

WORSHIP TEAM
Worship Lead: Peg Kasun, Ext. 225,
pkasun@stcharleshartland.org
Music Director: Dr. Aaron Mathews, Ext. 205,
amathews@stcharleshartland.org
Liturgist: Elizabeth Thompson, M.Div., 262-367-6704
ethompson@stcharleshartland.org
Liturgy Team Member: Jacqueline Bernard, Ext. 205
jbernard@stcharleshartland.org
Wedding Coordinator: Dee Anne Hamer, Ext. 215,
dhamer@stcharleshartland.org

DISCIPLESHIP TEAM
Adult Discipleship Lead: Maria Notch, Ext. 220,
mnotch@stcharleshartland.org
Children's Discipleship Lead: Shelly Buchan, Ext. 221,
sbuchan@stcharleshartland.org
Student Discipleship Lead: Bri Alexander, Ext. 209,
balexander@stcharleshartland.org
Baptism Coordinator: Mary Jo Romportl, Ext. 200,
mjromportl@stcharleshartland.org

OPERATIONS TEAM

Operations Manager: Mike Cattani, Ext. 229,
mcattani@stcharleshartland.org
Maintenance Manager: Tim Orzechowski, Ext. 217,
torzechowski@stcharleshartland.org
Accounting: Dee Anne Hamer, Ext. 215,
dhamer@stcharleshartland.org
Phase III Cornerstone: Brenda Zingsheim, Ext. 215,
bzingsheim@stcharleshartland.org
Safeguarding: Karen Dejewski, Ext. 206,
kdejewski@stcharleshartland.org

COMMUNICATIONS & STEWARDSHIP TEAM

Communications & Stewardship Team Lead: Allison Caswell,
Ext. 202, acaswell@stcharleshartland.org
Assistant to the Pastor: Terrie Carew, Ext. 224,
tcarew@stcharleshartland.org
Graphic Design Specialist: Renee Krier, Ext. 224,
rkrier@stcharleshartland.org
Administrative: Kathy Gillstrom, Ext. 200,
kgillstrom@stcharleshartland.org
Administrative: Mary Jo Romportl, Ext. 200,
mjromportl@stcharleshartland.org

PARISH OFFICE: 262-367-0800,
Mon. - Fri., 8 am - 4 pm
EMAIL US: parish@stcharleshartland.org

PARISH SCHOOL: 262-367-2040
school@stcharleshartland.org



WEBSITE & LIVESTREAM:
www.stcharleshartland.com
or scan QR code
with phone camera

WELCOME TO ST. CHARLES - WE ARE HERE FOR YOU

SATURDAY MASS OF ANTICIPATION: 5:00pm

SUNDAY MASS TIMES: 7:00am, 9:00am, 11:00am & 6:00pm

WEEKDAY MASS: Monday - Friday: 8:30am & Saturday: 8:30am

EUCCHARISTIC ADORATION

We offer Adoration from Mondays at 5:00 a.m. through Friday evenings at midnight.

For current openings, scan QR code.



RECONCILIATION

Saturdays: 9:30am - 10:30am & Thursdays: 5:00pm - 6:00pm

Please arrive within 30 minutes of the start time.

We have one Priest on Saturdays and two Priests on Thursdays.

SACRAMENT OF THE SICK/ ANOINTING MASSES

Sacrament of the Sick Masses are the 2nd and 4th FRIDAYS of every month or by appointment with Fr. Ken or Fr. Ariel (call the Parish Office).

OUTREACH SERVICES TEAM: Terri Blazek: 262-367-7608, jtblazek@wi.rr.com

TO ASK FOR PRAYERS or to be added to the email list, please email: prayernetwork@stcharleshartland.org

FOR EMERGENCY PRAYERS, please email: emergencyprayers@stcharleshartland.org

Printed weekly prayer sheets are available on the information wall.

ST. VINCENT DE PAUL: if you need food, shelter or assistance call 262-367-0800 (Parish Office)

NEED HOME COMMUNION:
For information call 262-367-0800 (Parish Office)

Mass Intentions for the Week of November 17th



Sunday, November 17

7:00 am Living and Deceased Members of St. Charles
9:00 am † Drew Wallace
11:00 am † Pete Schneider
6:00 pm † Terry Mathison

Monday, November 18

8:30 am † Rita Schroeder

Tuesday, November 19

8:30 am † Oliver J. Straszewski

Wednesday, November 20

8:30 am † James Klauser

Thursday, November 21

9:00 am † Suzanne Walsh

Friday, November 22

8:30 am † Lester & Frances Schaefer

Saturday, November 23

8:30 am Living and Deceased Members of Eugene Budzien Family
5:00 pm † Rachel Hansen

Sunday, November 24

7:00 am † Brian Gillstrom
9:00 am Living and Deceased Members of St. Charles
11:00 am † Amy Lamerand Zott
6:00 pm † Kurt Smolinski

Please pray for the repose of the souls of

Debra Acker & James Hilligoss

May their souls and the souls of all the faithfully departed
REST IN CHRIST'S PEACE.



If you go to the hospital ... Federal laws prohibit hospitals and nursing homes from routinely informing us when you are admitted, so **please call the Parish Office to schedule a priest or communion visit (262-367-0800.)**

One of the easiest ways to support St. Charles Parish and School is through the secured online e-giving system.



PARISH SUPPORT
THRU OCTOBER 20TH

FISCAL YEAR
JULY 1 THRU JUNE 30

2024 - 2025

Envelopes..... \$19,624.55
Offertory.....\$2,911.54
Weekend Total \$22,536.09
E-Giving..... \$12,554.50
YTD\$791,571.70

2023 - 2024

Envelopes..... \$27,037.00
Offertory.....\$2,200.51
Weekend Total \$29,237.51
E-Giving..... \$12,804.25
YTD\$698,016.80



THIS WEEKEND'S GOSPEL MEDITATION

33RD SUNDAY IN ORDINARY TIME

I recently moved into a new neighborhood. On my first evening, I went grocery shopping and could not find my usual favorite Greek yogurt. Strangely, my heart started to race. All the losses of my previous life hit me. So many of my old friends, habits, comforts, and predictable experiences had fallen away. There I stood, a grown man, crying like a little boy whose world was falling apart in the dairy aisle.

This week, Jesus describes what to do when one world ends and another begins. Does it apply to the end of time? Yes. Does it apply to the end of our individual lives? Yes. It also applies to every "world" we inhabit throughout our lives, in school, family, friendships, work, play and so on. First, the sun, moon, and stars fall. The old, familiar ways of running things suddenly stop working. Light fades. Things fall apart. It's awful. But second, Christ comes "in the clouds." Jesus, the Son of Man, replaces those old powers with himself as the prime governing principle. Third, he sends out his angels to "gather his elect from the four winds." He re-integrates the fragments into a new integrated whole. "Summer is near," he concludes. A new world begins.

Is your world crumbling? Are your sun, moon, and stars falling from the sky? Learn to discern the pattern of the Cross and Resurrection at work in it. This is the power we touch in the Mass. Jesus is coming precisely in this transition from the old to the new world. It doesn't make our losses easy. But it does make it possible to glimpse the dawning of a summer, a new beginning, the life of the world to come.

— Father John Muir

©LPi

PRAY WITH SCRIPTURE

Lectio Divina

15 minutes each day spent in God's presence — reading, reflecting, responding and resting with his Word — adds up to 90 hours in one year. That is time well spent and a testimony to how a little at a time turns into something remarkable!

Sunday, November 24th Readings

Dn 7:13-14/Ps 91:1, 1-2, 5 (1a)/Rv 1:5-8/Jn 18:33b-37

To find readings for the weekdays and/or Feast Days, please visit <https://bible.usccb.org/bible/readings>.

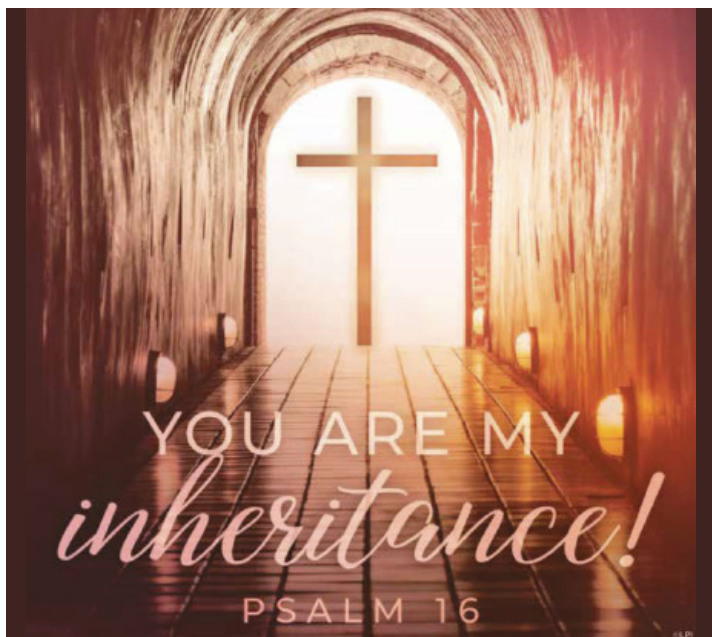
Reflection questions for Sunday, November 24th

- Daniel had visions of Jesus ("Son of man") receiving everlasting dominion, glory, and kingship from God ("the Ancient One"). Why do you think some people receive visions?
- Revelation teaches that Jesus loves us and has made us into a kingdom of priests for God. What do you think Jesus expects from us in return?
- In his trial Jesus tells Pilate he was born to testify to the truth. Can you think of a time in your life when you had to tell a difficult truth to someone?

READ. REFLECT. RESPOND. REST.



Cut out and keep in your Bible for reference!



FAMILY Thanksgiving MASS

WEDNESDAY, NOVEMBER 27TH
AT 6:00 PM

*All are welcome to attend
St. Charles Family Thanksgiving Mass!*



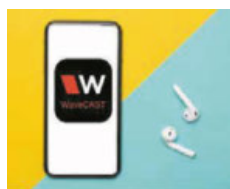
The Mass has become a St. Charles tradition and is a great way to celebrate our blessings and give thanks to the Lord. We hope you and your family will attend.

We also have a Thanksgiving Day Mass at 9 am on Thursday, November 28th. All are welcome to come and worship with us.



IN MEMORIAM

It is with great sadness that we announce that Debra Acker, our school's former librarian of over a decade, died on November 6 after a courageous battle with cancer. Please join us in keeping her husband Richard, children, and grandchildren in your prayers as they mourn the loss of this incredible woman who touched the lives of many students, families, and staff throughout her time at St. Charles.



AUDIO TECHNOLOGY TRAINING

The second training will be held Sunday, November 17 at 10:15am in the Borromeo Hall after 9am Mass. Donuts and coffee will be served for training attendees. At the end of each training, we will walk to the narthex of the Church to test out what we have learned. We will connect to St. Charles' wi-fi and the WaveCAST app with headphones/earbuds for improved listening.





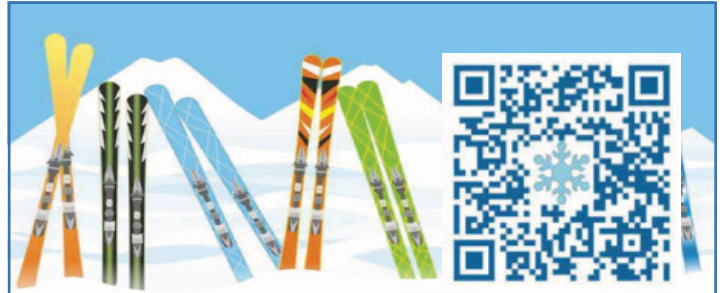
FIRST SACRAMENTS REGISTRATION

If your child will be receiving the sacraments of First Communion and First Reconciliation this year, **please be sure to register online by Saturday, November 30th.** Contact Shelly Buchan, Children's Discipleship Lead, sbuchan@stcharleshartland.org with any questions.



TEACHING SUBS NEEDED

St. Charles Parish School is in need of substitute teachers! Candidates must complete Safe Environment training through the Archdiocese of Milwaukee, and they must also have a bachelor's degree and a valid teaching license and/or a substitute teaching license. The process of acquiring a substitute teaching license is easy. Please contact the School Office at 262-367-2040 if you are interested!



REGISTRATION IS OPEN FOR THE SKI CLUB FOR 2025 SEASON

Registration is open! This is a great opportunity to ski and snowboard this winter — first-time beginners are encouraged! Students, parents, and parish members are ALL WELCOME to join! For more information, please check out the registration website and enter the group code STCHARLES2425.

The deadline to register is December 16, 2024!

Location: Little Switzerland, Slinger, WI (35 min. north of St. Charles)

Dates & Time: 4 outings

Friday evening, 4pm-9pm, January 10, 2025
Friday evening, 4pm-9pm, January 24, 2025
Friday evening, 4pm-9pm, February 7, 2025
Friday evening, 4pm-9pm, February 28, 2025



SCHOOL JINGLE SHOP

We are excited to announce that the Jingle Shop will be returning to our school this year on Wednesday, December 4! The Jingle Shop is a favorite fundraiser of the students that allows them to purchase gifts for their family at Christmas. We are collecting small, new items for the kids to choose from. We are also in need of gift wrapping materials (wrapping paper, gift bags, tissue paper, ribbons, and tape) as well as plastic bags (Sendik's, Piggly Wiggly, etc.). Cash donations are being accepted for the purchase of items for the Jingle Shop. Proceeds from this year's shop will go toward improving our Tot Lot area near the preschool classrooms. We are accepting donations through Tuesday, November 26 in our Parish and School Offices. Thank you for supporting our school!

St. Charles Parish and School 2025 Gala

JAZZ & Generosity

"The trumpeters and singers were heard as a single voice praising and giving thanks to the LORD." ~ 2 Chronicles 5:13

2025 GALA SAVE THE DATE

Save the date for our Parish & School Gala on February 22, 2025 at the Delafield Hotel! This year's theme is A Night of Jazz and Generosity. Swing into action and join the rhythm of giving! Explore exciting sponsorships, volunteer roles, and donor opportunities on our website. In the spirit of jazz and gratitude, share your most treasured assets — your time and talent — to support the parish that enriches our community. Visit the parish website to get involved!



WE ARE BLESSED!

A huge THANK YOU to Bob Mrugacz, father of Jacob, and grandpa of Jon & Grace, who put his carpentry skills to work as he built two beautiful beverage bars for the new Borromeo Hall!

The Hospitality Team is excited to begin using them for our events and deeply appreciate his talent and kindness!

CIRCLE OF LOVE

For the past two weekends, many of you picked a tag from the Circle of Love's "Miracle Tree" and are now busy shopping for your secret friend. When returning gifts, please place them under our tree in the Parish Office foyer area.



Remember your wrapped gift(s) are due in the Borromeo Hall by Noon, Sunday, December 1st.

Any questions, contact Debbie Lancour at 262-367-3869 or d2lancour@yahoo.com.

Sponsors can pick up their gifts on Sunday, December 1st between 12:30 p.m.-2:00 p.m. in the Borromeo Hall.

If you would like to volunteer for Circle of Love, call/text the above phone number or email for more information on volunteering opportunities.



TUESDAY MORNING BREAKFAST GROUP

All parishioners are welcome to attend a Tuesday Morning Breakfast after the 8:30am morning Mass on the 4th Tuesday of every month. The first breakfast will be held on **Tuesday, November 26th**. Breakfast is served, free of charge, so that all can gather to socialize and grow in friendship and faith. Email Dianne Merkel with any questions: diannemerke@gmail.com. We hope to see you there!

BULLETIN DUE DATES!

If you have an event(s) you would like to publicize in a November, December and/or January bulletin, please submit your information by the due dates listed below. This earlier deadline is due to the printer's holiday schedule. **Please submit all articles by 8:00 am on the due date.** Thank you!

- Dec. 1st Bulletin information is due Monday, Nov. 18th
- Dec. 8th Bulletin information is due Monday, Nov. 25th
- Dec. 15th Bulletin information is due Monday, Dec. 2nd
- Dec. 22nd Bulletin information is due Monday, Dec. 9th
- Dec. 29th Bulletin information is due Monday, Dec. 16th
- Jan. 5th Bulletin information is due Wednesday, Dec. 18th
- Jan. 26th Bulletin information is due Wednesday, Jan. 15th



Bulletin Advertisers of the Week

Please support our advertisers!

FOOT & ANKLE
Associates of Wisconsin
Parish Member
Dr. Amy Galati
Call: (262) 542-3779
www.footandanklewi.com

Sprung Heating & Pump Service LLC
HVAC • PLUMBING • WELL PUMPS • GENERATORS
PO BOX 3024 • MERTON, WI 53056
262-538-1400
www.sprungheating.com



ST. CHARLES NIGHT AT CULVER'S IN HARTLAND

Monday, December 2nd from 5:00-8:00 pm

Mention that you are with St. Charles, and the School receives 10% of the evening's sales! Thanks for your support!

STEWARDSHIP: YOUR TIME, TALENT AND TREASURES



SWEET DREAMS DINING OUT

We are excited to announce that our Home & School Association is partnering with Sweet Dreams in Hartland for monthly dining out opportunities! Please stop by anytime between 11 a.m.-8 p.m. on **Monday, November 18th** and let staff know you are there for St. Charles' Dining Out. We will receive at least 10% of sales that day. 11+ guests we will get 12% (from St. Charles sales).



LAKE COUNTRY BREAD OF LIFE COMMUNITY MEAL AT ST. CHARLES

St. Charles Parish is the home for the Lake Country Bread of Life Community Meal. What began as a meal for the needy in our area has turned into a host program that includes seniors and others in need of a good meal and fellowship. If you or someone you know could use some fellowship and a good healthy meal, please invite them to join us **Thursday, November 21st at 5:30 pm in the Borromeo Hall. The meal will be hosted by the St. Charles Garden Club, and they prepare a traditional Thanksgiving meal.** We also offer blood pressure readings before the meal.

St. Charles Outreach Services Team oversees the event. If you would like to volunteer or have questions, please contact the Parish Office or humanconcerns@stcharleshartland.org.



ST. CHARLES DINING OUT!

**Endter's Sports Grill in Hartland
Wednesday, Nov. 27th - 4 pm to 8 pm**

Endter's will donate \$5 for every large pizza and \$3 for every small pizza to St. Charles Parish School. Dine in or carry out. Don't forget to buy SCRIP for Endter's! They generously give us a 20% rebate on gift cards.

ST. VINCENT de PAUL SOCIETY



FOOD PANTRY NEEDS: Corned Beef Hash, Toilet Paper, Paper Towels, Cereal, Boxed Maple and Brown Sugar Single Serving Oatmeal, Deodorant, Toothpaste

The Gospel on the Thirty-Third Sunday in Ordinary Time predicts the end times. Our challenge, though, is to live faithfully now. When we live in conformity to the Word, hearing Jesus' words and living them out, the future holds no fear for us.

As you place your gifts of food for the pantry and make monetary donations to our general fund, know that you are hearing the words of Jesus and living them out. Thank you to all those who help support our mission.

A special Thank You to the Knights of Columbus 3562 for their generous donation of jackets for the children in our community. God bless you gentlemen for your generosity.

The St. Charles SVDP Food Pantry is located at 229 Lawn Street, Hartland and it is open Tuesday mornings between 10am and noon. It is also open on the second and fourth Tuesday evenings of the month between 5:30pm and 7pm. If you know of someone in need of our services, please call us at 262-367-0800.





2024 HARTLAND LIGHTS FRIDAY, DECEMBER 6

Visit downtown Hartland on **Friday, December 6, 2024** for Hartland's tree lighting. Visit downtown businesses for fun activities, enjoy horse drawn carriage rides and a holiday themed drone show. Festivities are 5:30-9 pm in downtown Hartland!



VISIT US ON SUNDAYS

The Parish Office will be open on a few Sundays in December! You are welcome to stop by on **December 8, 15, and 22 after the 7am, 9am, and 11am Masses**. This is a great opportunity to schedule Mass intentions, purchase SCRIP gift cards, drop off Cornerstone Campaign pledge cards, and ask any questions you may have.

ST. CHARLES IS HIRING

Are you feeling called to serve in a ministerial setting? St. Charles Parish is responding to our incredible growth by seeking faith-filled, missionary disciples to join our AMAZING parish staff!

- Full-time Maintenance
- Director of Finance
- Catechesis of the Good Shepherd Coordinator
- Small Group Coordinator

Benefits are heavenly! Staff retreats, Adoration, generous PTO, available healthcare insurance and pension plan. If you or someone you know is interested in learning more, please check our website or email Michelle Wick, Interim Human Resources, directly at mwick@stcharleshartland.org.



COME JOIN THE ST. CHARLES CAROLERS!

Be a St. Charles Caroler and sing by the tree in the Hartland Town Square for Hartland's Official Tree Lighting, "Hartland Lights" on **Friday, December 6 from 6pm - 6:30pm**. Carolers are invited to rehearse on **Monday, December 2, 6pm - 7pm in the St. Charles choir loft**. Refreshments and Holiday Activities are planned throughout the evening.



CHRISTMAS AND GIVING!

The Holiday Train will arrive on **Sunday, December 8th, 2024 at 5:45 pm**. St. Charles' St. Vincent de Paul Conference will be collecting funds and non-perishable food items for our local pantry and the Hartland Food Pantry. There will be several drop off sites near or along Cottonwood and Pawling Avenues. Help the needy in our community while having a wonderful time celebrating the Christmas season.

ARE YOU RECEIVING OUR EMAILS?

St. Charles sends weekly email blasts and special news emails to keep you informed of the latest happenings and worship opportunities. Go to the homepage on our website (www.stcharleshartland.com), scroll down, click on the yellow box and enter your email. This email list is for the use of St. Charles emails only and not distributed elsewhere.



CATHOLIC CHARITIES IS ASSISTING AREAS DEVASTATED BY HURRICANES HELENE AND MILTON *and they need your help!*

Catholic Charities USA is providing immediate disaster relief such as food, water and shelter across the Southeast.

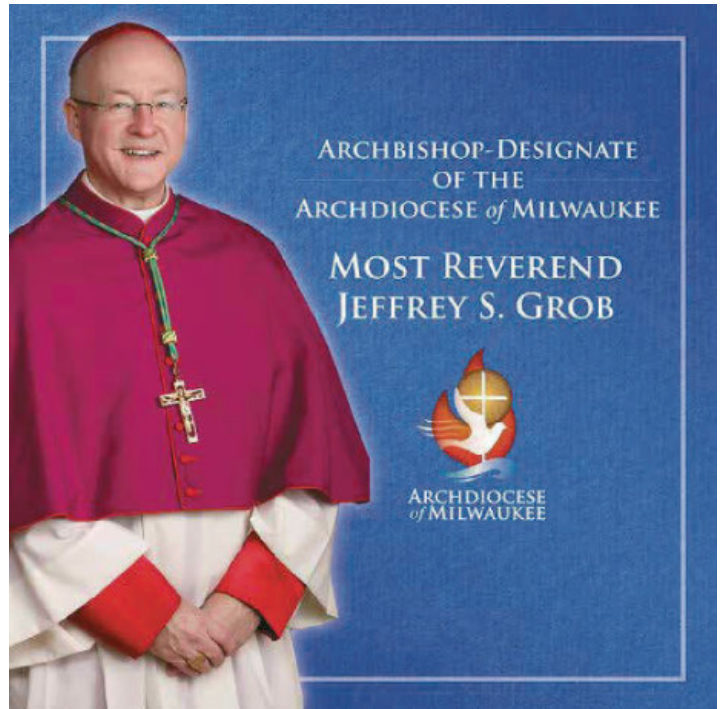
Donations are still deeply needed to help hurricane survivors, with 100% of funds going to local Catholic Charities agencies.

Catholic Charities USA is the official domestic relief agency of the U.S. Catholic Church.



Please donate generously to Catholic Charities USA at catholiccharitiesusa.org.

ARCHDIOCESE of MILWAUKEE



WELCOME, MOST REVEREND JEFFREY S. GROB

The Archdiocese of Milwaukee recently announced that Pope Francis has chosen the Most Reverend Jeffrey S. Grob to be the Archbishop-Designate of our Archdiocese. Archbishop-Designate Grob was born in Madison and has served as an auxiliary bishop for the Archdiocese of Chicago for the last four years. He will be installed as Archbishop of Milwaukee on January 14, 2025. Archbishop Jerome Listecki will serve as Apostolic Administrator of the Archdiocese until that time. Please join us in welcoming and praying for Archbishop-Designate Jeffrey S. Grob!

Caught up in God's LOVE *Listening to the call*

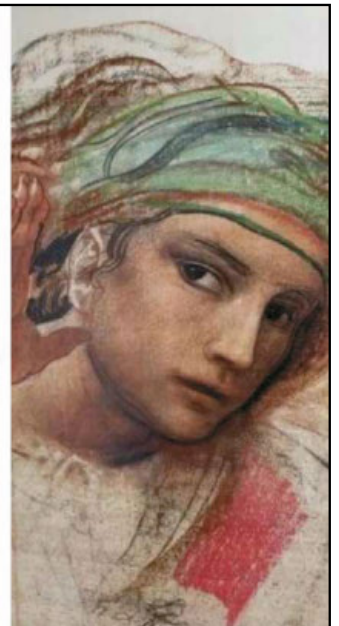
Discernment Retreat
for single women
ages 18-45

February 21-23, 2025
St. Louis, Missouri

Learn more and register at
ssnd.org/events/retreat225



School Sisters
of Notre Dame





Ground Crew Service

Full Service Landscape Management

262.821.9680

www.groundcrewservice.com

Hartland Terrace Assisted Living

- RN Lead 24-Hour Elite Care Team
- Full Continuum of Care • Memory Care
- All Inclusive Pricing • Private Studios
- Family Centered Care Model

327 North Avenue • Hartland | 262-369-4391
www.hartlandterrace.com

TODD WANGERIN ELECTRIC, Inc.

Free Estimates - Licensed - Insured
Over 20 years experience
Todd Wangerin 262-719-4411
twelectric4411@att.net

7 Day Free Trial

- Personal Training Call or text Ryan Zingsheim 262-527-5880
- Group Fitness
- Open Gym
- And more!

RYZING FITNESS

*founded by parish alumni



Rick Kalscheuer
Parish Member
Tom McInerney
Jon Budzien
MyKnowledgeBroker.com
800.566.7007
we know.

Holzhauser, Hewett & Barta S.C.
Orthodontic Care For Children And Adults

Daniel Holzhauser DDS MS | Charles Hewett DDS MS | Joshua Barta DDS MS | Benjamin Schneider DDS MS
520 Hartbrook Dr., Hartland 262-367-7076
2090 Continental Dr., West Bend 262-306-0600
10225 W. Capitol Dr., Wauwatosa 414-463-5700

www.hhortho.com

IF YOU LIVE ALONE

MDMedAlert!

- ✓ Ambulance/Police
- ✓ Family/Friends
- ✓ GPS & Fall Alert

As Low As **\$19⁹⁵** mo.

CALL NOW!

800.808.9294

md-medalert.com



FREE AD DESIGN
with purchase of this space
CALL 800-477-4574

Join our Team!
Serve your local Catholic Community, become an agent with the Knights of Columbus!
Contact us at www.kofcwi.org
Life Insurance • Disability Income Insurance
Long Term Insurance • Retirement Annuities

Tim J. Nowak, FICF
General Agent
(920) 810-6188
timothy.nowak@kofc.org



KOWAL INVESTMENT GROUP
The Retirement Specialists
Aaron T. Kowal, CFP®
W238N1660 Busse Rd., Ste. 100, Waukesha, WI 53188
262-522-4040
www.kowalinvestmentgroup.com

Kowal Investment Group, LLC ("Kowal") is a Registered Investment Advisor ("RIA"), with the U.S. Securities and Exchange Commission ("SEC"). Kowal provides investment advisory and related services for clients in State of Wisconsin and other states.

Call us to schedule your free, no obligation, financial check-up today.

BUNZEL'S OLD FASHIONED MEAT MARKET

Fresh Custom Cut Choice Meats
Party Trays • Catering
Thank You For Supporting A Family Tradition
9015 W. BURLEIGH 873-7960
www.bunzelmeats.com

FOOT & ANKLE
Associates of Wisconsin
Parish Member
Dr. Amy Galati
Call: (262) 542-3779
www.footandanklewi.com

DOES YOUR NONPROFIT ORGANIZATION NEED A NEWSLETTER?
Engaging, ad-supported print and digital newsletters to reach your community.
VisitIpicommunities.com



701 Industrial Ct., Hartland
262-367-5800

TOWN BANK

A WINTRUST COMMUNITY BANK
800-433-3076
www.townbank.us

Palmer's STEAKHOUSE
www.Palmerssteakhouse.com
122 E. Capitol Dr. • Hartland, WI
262-369-3939

CHARLES ST.
St. Charles School... We choose Christ in learning, living, & values in the light of our faith.
262-367-2040
www.stcharlesschoolhartland.com

JENSON MOTORS
Auto - Truck Repair
Hours: Mon-Fri 7:30-5:30
Proprietor: Guy Jenson
262-367-5556
364 Cottonwood Ave., Hartland, WI

catholicmatch® Wisconsin



CatholicMatch.com/WI

VISU-SEWER, INC.
262-695-2340
Professional Sewer Inspection, Maintenance and Rehabilitation Services
Parish Members
www.visu-sewer.com

FALBO PIZZERIA
Carry Out ~ Delivery ~ Catering
262-367-2700 | FalboPizza.com
Pizzas • Subs • Salads • Appetizers
Located on 418 Merton Avenue off Hwy 16 in Hartland

LAKESIDE INTERNATIONAL TRUCKS **BADGERLAND IDEALEASE** **Bill Reilly, Jr. Parish Member**
Offering Wisconsin businesses transportation solutions nearly 40 years.
• Truck Sales
• Parts
• Service
• Body Shop
• Leasing & Rental
SERVING: Milwaukee • Madison • Racine
West Bend • Sheboygan • Janesville • Monroe • Rockford



EVERT-LUKO FUNERAL HOME & CREMATION SERVICES
Guiding with skillful hands and soulful hearts
262-367-2156
www.evertlukofuneralhome.com

Compliments of:
Boehme & Taylor, CPAs

PROMACH Performance. Packaged.
CL&D **\$2,000 RETENTION BONUS IN THE FIRST YEAR!**
\$20+/HOUR
cldgraphics.com/careers

KLINK'S KARPETS, INC.
Hartland's Floor Covering Center
Family Owned & Operated for over 47 Years
Carpeting & Hard Surfaces
107 North Ave. Hartland, WI
367-4670 Parish Member

We help real estate investors invest in passive assets and defer tax.
If you are planning on selling your investment property, let's talk.



INSIGHT INVESTMENT ADVISORS
BRANDON BRUCKMAN
414-882-8738
www.investwithinsight.com

Broaching Technologies
Machines • Tooling • Subcontracting
Blind and Thru Hole: www.keyway-spline-broaching.com
Broaching, Splining, Keyseating, P (262) 820-1200
Slotting, Shaping sales@broachingtech.com

DAVE PERRY
heating • cooling
Proudly Serving the Lake Country Area for more than 20 years
Heating • Air Conditioning • Geothermal
New Construction • Replacement
262.966.1959
www.daveperryheatingandcooling.com

Generations DENTAL
Jim Muenzenberger, D.D.S.
and Kelly Newman, D.D.S.
Parish Members
139 E. Capitol Dr. Hartland, WI 53029
Office 262-387-2750
GenerationsDentalHartland.com

Sprung Heating & Pump Service LLC
HVAC • PLUMBING • WELL PUMPS • GENERATORS
PO BOX 3024 • MERTON, WI 53056
262-538-1400
www.sprungheating.com

Lake Country Eye Care
580 Hartbrook Dr. • Hartland, WI
Amber A. Dentz, OD - Parishioner
www.lakecountryeyecare.com
262-367-6610

CMC
For All Your Remodeling Needs!
KITCHEN & BATH REMODELING
COMPLETE HANDYMAN SERVICES
JIM FISCHER
fischerjames29@gmail.com
414-614-7329



For ad info. call 1-800-950-9952 • www.4lpi.com

St. Charles Catholic Church, Hartland, WI

B 4C 01-0639

Helping you achieve financial dreams



James Dunn
Managing Director – Financial Advisor
(262) 395-1101
www.dunninvestmentmanagement.com



Mulch • Firewood • Nursery
262-777-1523
W275N7813 Lake Five Rd Hartland, WI
LakeFiveSupply.com



Brenna Fischer
Hairstylist
262-844-5934
601 Ryan St., Ste 302
PEWAUKEE WI
brennafischer.glossgenius.com

REICHL & KOLSTAD
ORTHODONTICS

Dr. Peter Reichl & Dr. James Kolstad
look forward to meeting you!

Offering Traditional Braces & Invisalign
Located in Waukesha,
Mukwonago & Hartland
262-547-2827
www.ReichlKolstadOrtho.com

WISE
DESIGN BUILDERS
262-790-4444
Parish Members
www.wisedesignbuilders.com

Lake Country Remodeling Specialist

CARPET PLUS, INC.
We Bring the Showroom to You!
(414) 573-0105
Proudly Serving Crusader Nation for over 25 years!
Dan Taylor, Parish Member

COURI
INSURANCE
AGENCY

Protection for the Unexpected™

Coverages
IMPORTANT
Pricing
IMPORTANT
Low Costs
GREAT COVERAGES

Jerry & Judie Couri
262-548-8077 • couri.com

DON CULL EXCAVATING
W298 N9248 Center Oak Rd
Septic & Mound Systems Grading
966-7038
MPRS 221589

CCCI
Corporate Contractors Inc.
CCIWI.COM

Angela Isherwood
Owner & Luxury Travel Designer
Parishioner
262.229.9271
Angela@OliveAndAtlasTravel.com
www.OliveAndAtlasTravel.com

ADT-Monitored Home Security
Get 24-Hour Protection From a Name You Can Trust

- Burglary
- Flood Detection
- Fire Safety
- Carbon Monoxide

833-287-3502

SUPPORT OUR
ADVERTISERS!

PASTERNAK & ZIRGIBEL S.C.
FRANK PASTERNAK, PARISH MEMBER

BEST LAWYERS IN AMERICA
BEST LAW FIRMS U.S. NEWS & WORLD REPORT
TOP 25 MILWAUKEE & TOP 50 WISCONSIN SUPER LAWYERS
(262) 785-0802 injurywisconsin.com

OFFICE FURNITURE WAREHOUSE®
New & Preowned Office Furniture
Design, Delivery, Installation, & Liquidation Services
Elijah Walters (262) 719-8621
ofwgo.com

The GOOD DENTIST
Dr. Marta Ostromecki, DDS Parishioner
(262) 223-3169
www.tgdentist.com
Always Accepting New Patients
N67W28025 Sussex Rd., Suite 100, Hartland, WI



PAUN Construction
Specializing in Masonry
Residential & Commercial
W300 N7741 Christine Ln., Hartland, WI 53029
Robert J. Paun (262) 326-8043
www.paunconstruction.com
mail@paunconstruction.com

CITGO

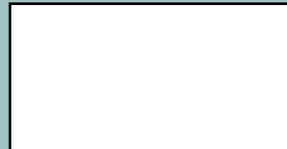
Station Hartland
Offering a variety of Pernat and Leroy Meats products
Walk-in Beer cave
301 E. Capitol Dr Hartland WI
Mon-Sat: 5AM-10PM Sun: 6AM-9PM
Stop in and ask about our Loyalty Program

PLM
PAVING AND CONCRETE
Parking Lot Maintenance, Inc.
262.691.3964 www.plmpaving.com

Wolf Electric LLC
Commercial, Industrial, Residential
Garrett Wolf • Master Electrician/Parishioner
Commercial • Industrial • Residential
(414) 899-3608 • www.wolfelectricllc.com

SCOTT HEYERDAHL
Realtor®/Broker
• Home & Condo Sales
• Notary Public Services
262-719-6970
FIRST WEBER REALTY
scottHeyerdahl.firstweber.com

Please Support these
CONTRACTORS
Thank You to these contractors
helping St Charles grow!



FRONTIER
TITLE & CLOSING SERVICES
1130 James Drive, Hartland, WI 53029
Office: 262-361-4466 Fax: 262-361-4462
www.frontiertitlellc.com

Frontier Title & Closing Services, LLC
Lake Country's Most Experienced
Title & Closing Company
Specializing in Residential,
Commercial & New Construction
Transactions
Serving the Real Estate
Community!

NELCO ELECTRIC, INC.
GERMANTOWN, WI
Commercial • Industrial • Residential
24 Hour Service **262-502-9950**
WWW.NELCOELECTRIC.COM
Barb Jarchow Parishioner

DFI MASINI, INC.
CONTRACTORS
262 / 820-8300
WHEN YOU EXPECT THE BEST

What Will Be Your Legacy?
If you value your faith and your family, I welcome the opportunity to share my faith-based perspective in union with my financial experience in order to co-create a personal legacy strategy. I can assist with: Portfolio Management | Retirement Planning | Financial & Legacy Strategies | Special Needs Planning

Kurt Maltby, CFP®, CHsNC®
CERTIFIED FINANCIAL PLANNER™
Assistant Vice President, Financial Advisor

Morgan Stanley
20975 Swenson Drive, Waukesha
Phone: (262) 523-8303 | NMLS # 1504808
advisor.morganstanley.com/the-riverwood-wealth-management-group

Parishioner

Morgan Stanley and its Financial Advisors do not provide tax or legal advice. Individuals should seek advice based on their particular circumstances from an independent tax advisor. Morgan Stanley Smith Barney LLC. Member SIPC. CRC281548 08/18

Custom Asphalt Solutions Since 1941

WOLF PAVING
Parking Lots
Private Roads
Walking Paths
Athletic Courts
wolfpaving.com

zimmerman
ARCHITECTURAL STUDIOS, INC.
200 Silver Mt. Vernon Avenue
Milwaukee, WI 53233 | zimmerman.com
TELEPHONE (414) 475-9900
FAX/EMAIL (414) 475-8584