



*At St. Charles, all are invited to  
meet Christ, know Christ,  
love Christ and serve Christ.*

**March 3, 2024  
THIRD SUNDAY OF LENT**



## **THIRD SUNDAY OF LENT**

*Jesus answered and said to them, "Destroy this temple and  
in three days I will raise it up." (Jn 2:19)*

**St. Charles Parish & School | 313 Circle Drive, Hartland, WI 53029**

**262-367-0800 | [www.stcharleshartland.com](http://www.stcharleshartland.com) | email: [parish@stcharleshartland.org](mailto:parish@stcharleshartland.org)**



# WELCOME TO ST. CHARLES - WE ARE HERE FOR YOU



PASTOR  
Fr. Ken Omernick



ASSOCIATE PASTOR  
Fr. Ariel Orozco

## ST. CHARLES STAFF TEAMS

ASSOCIATE PASTOR & Becoming Fully Catholic:  
Fr. Ariel Orozco, [aorozco@stcharleshartland.org](mailto:aorozco@stcharleshartland.org)

### TEACHING PARISH SEMINARIAN:

Deacon David Sweeney, [dsweeney@sfs.edu](mailto:dsweeney@sfs.edu)  
Timothy Heyrman, [theyrman@sfs.edu](mailto:theyrman@sfs.edu)

### SCHOOL TEAM 262-367-2040

Principal/School Team Lead: Dan Garvey, Ext. 208,  
[dgarvey@stcharleshartland.org](mailto:dgarvey@stcharleshartland.org)  
Advancement Officer: Allison Caswell, Ext. 202,  
[acaswell@stcharleshartland.org](mailto:acaswell@stcharleshartland.org)  
School Administrative: Lisa Moehrke, Ext. 206,  
[school@stcharleshartland.com](mailto:school@stcharleshartland.com)  
School Administrative: Karen Dejewski, Ext. 206,  
[school@stcharleshartland.com](mailto:school@stcharleshartland.com)  
School Administrative: Nina Wolf, Ext. 206,  
[school@stcharleshartland.com](mailto:school@stcharleshartland.com)

### WORSHIP TEAM

Worship Lead: Peg Kasun, Ext. 225,  
[pkasun@stcharleshartland.org](mailto:pkasun@stcharleshartland.org)  
Liturgist: Elizabeth Thompson, M.Div., 262-367-6704  
[ethompson@stcharleshartland.org](mailto:ethompson@stcharleshartland.org)  
Music Director: Dr. Aaron Mathews, Ext. 225,  
[amathews@stcharleshartland.org](mailto:amathews@stcharleshartland.org)  
Wedding Coordinator: Dee Anne Hamer, Ext. 215,  
[dhamer@stcharleshartland.org](mailto:dhamer@stcharleshartland.org)

### DISCIPLESHIP TEAM

Discipleship Team Lead: Deacon Jon Gabik, Ext. 201,  
[jgabik@stcharleshartland.org](mailto:jgabik@stcharleshartland.org)  
Adult Discipleship Lead: Maria Notch, Ext. 220,  
[mnotch@stcharleshartland.org](mailto:mnotch@stcharleshartland.org)  
Adult Discipleship Coordinator: Hannah Osborne, Ext. 220,  
[hosborne@stcharleshartland.org](mailto:hosborne@stcharleshartland.org)  
Children's Discipleship Co-Lead: Shelly Buchan, Ext. 205,  
[sbuchan@stcharleshartland.org](mailto:sbuchan@stcharleshartland.org)  
Children's Discipleship Co-Lead: Alicia Van Hecke, Ext. 205,  
[avanhecke@stcharleshartland.org](mailto:avanhecke@stcharleshartland.org)  
Student Discipleship Lead: Nick Scanlan, Ext. 209,  
[nscanlan@stcharleshartland.org](mailto:nscanlan@stcharleshartland.org)  
Student Discipleship Lead: Bri Alexander, Ext. 221,  
[balexander@stcharleshartland.org](mailto:balexander@stcharleshartland.org)

Baptism Coordinator: Mary Jo Romportl, Ext. 200,  
[mjromportl@stcharleshartland.org](mailto:mjromportl@stcharleshartland.org)

### OPERATIONS TEAM

Operations Manager/Team Lead: Deacon Jon Gabik,  
Ext. 201, [jgabik@stcharleshartland.org](mailto:jgabik@stcharleshartland.org)  
Facilities Manager: Mike Cattani, Ext. 210,  
[mcattani@stcharleshartland.org](mailto:mcattani@stcharleshartland.org)  
Maintenance Manager: Tim Orzechowski, Ext. 217,  
[torzechowski@stcharleshartland.org](mailto:torzechowski@stcharleshartland.org)  
Accounting: Dee Anne Hamer, Ext. 215,  
[dhamer@stcharleshartland.org](mailto:dhamer@stcharleshartland.org)  
Administrative: Brenda Zingsheim, Ext. 215,  
[bzingsheim@stcharleshartland.org](mailto:bzingsheim@stcharleshartland.org)  
Cornerstone/Safeguarding: Karen Dejewski, Ext. 215,  
[cornerstoneproject@stcharleshartland.org](mailto:cornerstoneproject@stcharleshartland.org)

### COMMUNICATIONS & STEWARDSHIP TEAM

Communications & Stewardship Team Lead: Allison Caswell,  
Ext. 202, [acaswell@stcharleshartland.org](mailto:acaswell@stcharleshartland.org)  
Assistant to the Pastor: Terrie Carew, Ext. 224,  
[tcarew@stcharleshartland.org](mailto:tcarew@stcharleshartland.org)  
Graphic Design Specialist: Renee Krier, Ext. 224,  
[rkrier@stcharleshartland.org](mailto:rkrier@stcharleshartland.org)  
Administrative: Kathy Gillstrom, Ext. 200,  
[kgillstrom@stcharleshartland.org](mailto:kgillstrom@stcharleshartland.org)  
Administrative: Mary Jo Romportl, Ext. 200,  
[mjromportl@stcharleshartland.org](mailto:mjromportl@stcharleshartland.org)

PARISH OFFICE: 262-367-0800,  
Mon. - Fri., 8 am - 4 pm

EMAIL US: [parish@stcharleshartland.org](mailto:parish@stcharleshartland.org)

PARISH SCHOOL: 262-367-2040,

[school@stcharleshartland.org](mailto:school@stcharleshartland.org)

WEBSITE & LIVESTREAM:  
[www.stcharleshartland.com](http://www.stcharleshartland.com) or  
scan QR code with phone camera





# WELCOME TO ST. CHARLES - WE ARE HERE FOR YOU

SATURDAY MASS OF ANTICIPATION: 5:00pm

SUNDAY MASS TIMES: 7:00am, 9:00am, 11:00am & 6:00pm

WEEKDAY MASS: Monday - Friday: 8:30am & Saturday: 8:30am  
*Monday ~ Friday: 6:30am (during Lent)*

TUESDAY TRADITIONAL MASS

Monthly on the fourth Tuesday at 5:30 pm

## EUCCHARISTIC ADORATION

Join us in our Chapel **Mondays through Fridays from 5 a.m. to 11 p.m.**! You may enter and exit through the parish's main entrance during these times. Scan the QR code for more information!



## RECONCILIATION

Saturdays: 3:00pm - 4:00pm & Thursdays: 5:00pm - 6:00pm

## SACRAMENT OF THE SICK/ ANOINTING MASSES

Due to the change in the School Mass schedule, celebration of the Sacrament of the Sick will now take place **on the 2nd and 4th Thursdays of every month during the 8:30 a.m. Mass.** or by appointment with Fr. Ken or Fr. Ariel (call the Parish Office).

OUTREACH SERVICES TEAM: Terri Blazek: 262-367-7608,  
jtblazek@wi.rr.com

TO ASK FOR PRAYERS or to be added to the email list, please email:  
prayernetwork@stcharleshartland.org

FOR EMERGENCY PRAYERS, please email:

emergencyprayers@stcharleshartland.org

*Printed weekly prayer sheets are available on the information wall.*

ST. VINCENT DE PAUL: if you need food, shelter or assistance call  
262-367-0800 (Parish Office)

## NEED HOME COMMUNION:

For information call 262-367-0800 (Parish Office)

## Mass Intentions for the Week of March 3rd



### Sunday, March 3 ~ Third Weekend of Lent

7:00 am † Kathleen Hoffmann  
9:00 am † Joseph Sizer  
11:00 am Living & Deceased Members of Young at Heart  
6:00 pm † Rose Weber

### Monday, March 4

6:30 am † Ricky Westlake  
8:30 am † Joseph Schaefer

### Tuesday, March 5

6:30 am † Paul Malkowski  
8:30 am † Loren & Gilda Welsh

### Wednesday, March 6

6:30 am Living & Deceased Members of the Zussman & Mulhaney Families  
8:30 am † Sue Lewinski

### Thursday, March 7

6:30 am † Joseph W. Weigel  
8:30 am † Joe Schaefer

### Friday, March 8

6:30 am † JoAnne Meyers  
8:30 am † David Leaman

### Saturday, March 9

8:30 am † John Shannon  
5:00 pm † Helen Eggert

### Sunday, March 10 ~ Fourth Weekend of Lent

7:00 am Living and Deceased Members of St. Charles  
9:00 am † Kathie Henkel  
11:00 am † Betty Rubin  
6:00 pm Special Intention

## BULLETIN DUE DATES!

If you have an event(s) you would like to publicize in these March and April bulletins, please email your information by 8:00 am on the due dates listed below to rkrier@stcharleshartland.org.

- March 24th bulletin is due Wednesday, March 13th
- March 31st bulletin is due Monday, March 18th
- April 7th bulletin is due Monday, March 25th

One of the easiest ways to support St. Charles Parish and School is through the secured online e-giving system.



PARISH SUPPORT  
THRU FEBRUARY 4TH

FISCAL YEAR  
JULY 1 THRU JUNE 30

### 2022 - 2023

Envelopes..... \$43,627.00  
Offertory..... \$2,637.37  
Weekend Total ..... \$46,264.37  
E-Giving ..... \$23,253.19  
YTD ..... \$1,604,881.32

### 2021-2022

Envelopes..... \$27,332.70  
Offertory..... \$2,436.26  
Weekend Total ..... \$29,768.96  
E-Giving ..... \$12,454.60  
YTD ..... \$1,448,723.52

## 3RD SUNDAY OF LENT GOSPEL MEDITATION

*I am the Lord your God ... You shall not have other gods besides me.*  
—Ex 20:2-3

One of the greatest golfers of all time — if not the greatest — was Jack Nicklaus. Which is why it is baffling that at the beginning of each season he would return to his childhood coach and re-learn how to grip the golf club. It's like Shakespeare re-learning the alphabet and grammar. Why would he do that? Because Jack knew that the fundamentals are always relevant. Perfecting and obsessing over his grip allowed him to do everything else in the game well. In sports and life, the best ones love the basics.

Similarly, as we begin Lent, we re-learn the spiritual basics in the Ten Commandments. Consider the first, to "have no other gods besides me." This is our "grip." Is our connection to God one of absolute fidelity and exclusive worship? Am I willing to let go of my precious idols, the things I cling to instead of God? Once we say "yes" to this fundamental question of our spiritual "grip," then we are ready to properly engage with everything else in life. Watch how beautifully the game of life unfolds in the next nine commandments (numbered in parentheses): how we speak to God and others (2 and 8), how we organize our week (3), how we relate to our family (4) and the wider community (5 and 7), how we live our sexuality (6), and how we order all the other desires of the human heart (9 and 10). But don't rush to these later Commandments too soon! Everything in life is built on the first Commandment. The more we focus on worshiping God alone, the better we navigate the complexity of life with panache, effectiveness, and love.

Lenten challenge: This week, identify what you can do to better worship God alone. If you're not sure, scan the last nine commandments to identify what you are most likely to worship instead of God.

~ Father John Muir ©LPi

### 10 THINGS TO DO WHEN YOUR LENT PLAN FAILS

 <p><b>ACCEPT IT</b> ACCEPT IF AND HOW YOUR PLAN HAS FAILED</p>	 <p><b>GO TO CONFESSION</b> MAKE AN EXAMINATION OF CONSCIENCE AND START OVER</p>	 <p><b>GET BACK UP</b> REMEMBER YOUR LENTEN RESOLUTIONS AND BEGIN AGAIN</p>	 <p><b>WHAT WENT WRONG?</b> PONDER ON THE SERIES OF EVENTS THAT LED YOU HERE</p>	 <p><b>PRAY</b> PRAYER HELPS YOU REVIVE YOUR SOUL. LISTEN TO GOD'S VOICE</p>
 <p><b>FAST</b> FASTING ENABLES US TO DOMINATE OUR DESIRES</p>	 <p><b>GIVE ALMS</b> WHEN WE GIVE ALMS, WE DO OURSELVES AND OTHERS A GREAT THING</p>	 <p><b>LISTEN</b> FOLLOW THE ADVICE FROM THE PEOPLE IN YOUR LIFE</p>	 <p><b>FOCUS</b> FOCUS ON ACCOMPLISHING WHAT YOU SET OUT TO DO</p>	 <p><b>ASK FOR HELP</b> LEAN ON YOUR FRIENDS, PRIEST, MENTORS, AND FAMILY</p>

SOURCE: CATHOLICEXCHANGE.COM



## PRAY WITH SCRIPTURE Lectio Divina

*15 minutes each day spent in God's presence — reading, reflecting, responding and resting with his Word — adds up to 90 hours in one year. That is time well spent and a testimony to how a little at a time turns into something remarkable!*

### Sunday, March 10th Readings

**Sunday: 2 Chr 36:14-16, 19-23/Ps 137:1-2, 3, 4-5, 6 (6ab)/Eph 2:4-10/Jn 3:14-21 Scrutiny: 1 Sm 16:1b, 6-7, 10-13a/Ps 23:1-3a, 3b-4, 5, 6 (1)/Eph 5:8-14/Jn 9:1-41 or 9:1, 6-9, 13-17, 34-38**

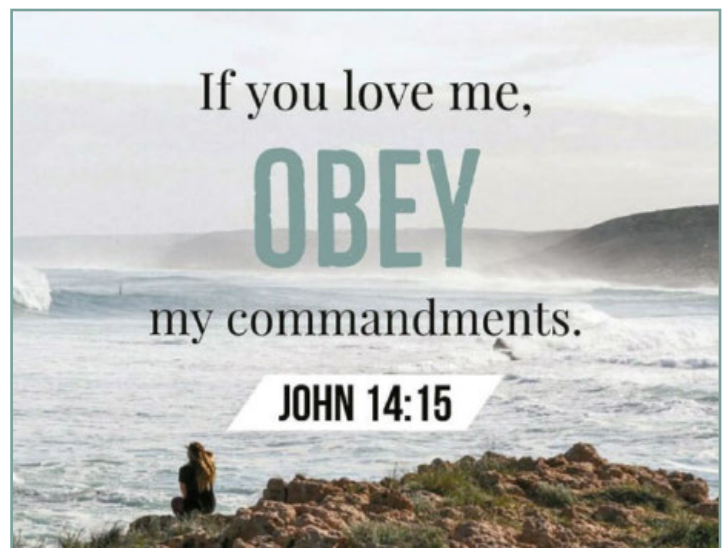
To find readings for the weekdays and/or Feast Days, please visit <https://bible.usccb.org/bible/readings>.

### Reflection questions for Sunday, March 10th

- We hear how God reacted strongly against Israel's disobedience and infidelity, ultimately sending them to exile in Babylon. But God also showed mercy to Israel in sending king Cyrus of Persia to rescue them. As we enter the fourth Sunday of Lent, for what do you need God's mercy in your life?
- Paul taught the Ephesians that by God's mercy and grace, we have been saved through Christ for the good works that God has prepared for us. Where in your life do you feel like you are doing God's work?
- Jesus taught Nicodemus that God loves the world and desires to save it. In what ways do you show love and respect for our world?

**READ. REFLECT. RESPOND. REST.**

*Cut out and keep in your Bible for reference!*



## JOURNEY THROUGH LENT & SMALL GROUPS



### LENTEN ALMSGIVING LA SAGRADA FAMILIA

Looking for ways to give during Lent? In lieu of Lenten rice bowls, St. Charles is supporting La Sagrada Familia. Your Lenten almsgiving will go to support one of the following

projects: water lines connecting the water supply to houses (about \$600 per home), home repairs, food pantry, child care center, dental supplies, medical supplies, student scholarships, and for the purchase of liturgical items for their chapel.

You can drop off your support to the Parish Office anytime during the Lenten Season. Please make checks payable to St. Charles Parish with "Lenten Almsgiving" on the memo line. You are also able to contribute via e-giving on our website. Thank you for your generosity this Lenten season.



### JOIN A LENTEN SMALL GROUP

There are still spots available for you to join a small group for the rest of Lent. There are spots available for YOU to join a small group for the six weeks of Lent. This is a great way to form faith-filled friendships while preparing your heart this Lenten season.

To sign up, please see the News story on our website. For more information contact Maria Notch at [mnotch@stcharleshartland.org](mailto:mnotch@stcharleshartland.org) or Hannah Osborne at [hosborne@stcharleshartland.org](mailto:hosborne@stcharleshartland.org).



### RITE OF ELECTION - ONE STEP CLOSER

Our Becoming Fully Catholic group attended the Rite of Election at the Cathedral of St. John the Evangelist on Sunday, February 25th. St Charles was represented by 16 candidates (baptized Christians seeking full communion with the church) and 3 catechumens (non-baptized persons seeking communion with the church) who attended this powerful event in which the universal church gathered to pray for those who will be received at Easter. Congratulations to our catechumens and candidates on this grand ceremony, a milestone in their journey to becoming fully Catholic.

### PARENTS OF CHILDREN IN CATECHESIS OF THE GOOD SHEPHERD(CGS)

YOU are invited to a night of reflection on "Lent in the Atrium & in the Family." This night is designed to engage and equip YOU as a parent to walk through this liturgical season both personally and as a family. Come on either Wednesday night- March 6th or March 13th from 5:30-7pm - you don't want to miss this once in a season opportunity!



### LENTEN STATIONS OF THE CROSS AT HOLY HILL

**9am on Saturday, March 9th**

The Adult Discipleship Team invites all parishioners to partake in this sacred tradition at a beautiful Wisconsin Shrine to encounter Christ through nature and each other as we walk with fellow parishioners outdoor praying the Stations of the Cross (weather permitting).

We will meet at Station Way Road Picnic Area at 1596 Station Way Road, Hubertus, WI 53033. If there is precipitation, meet in the lobby outside of Holy Hill's gift shop, then we will move to one of the chapels to pray.

For more information contact Maria Notch at [mnotch@stcharleshartland.org](mailto:mnotch@stcharleshartland.org) or Hannah Osborne at [hosborne@stcharleshartland.org](mailto:hosborne@stcharleshartland.org). We hope you can join us.

LENT  
prayer • fasting • almsgiving



*Sarah Hart*

*"Feast Meant for Everyone"*

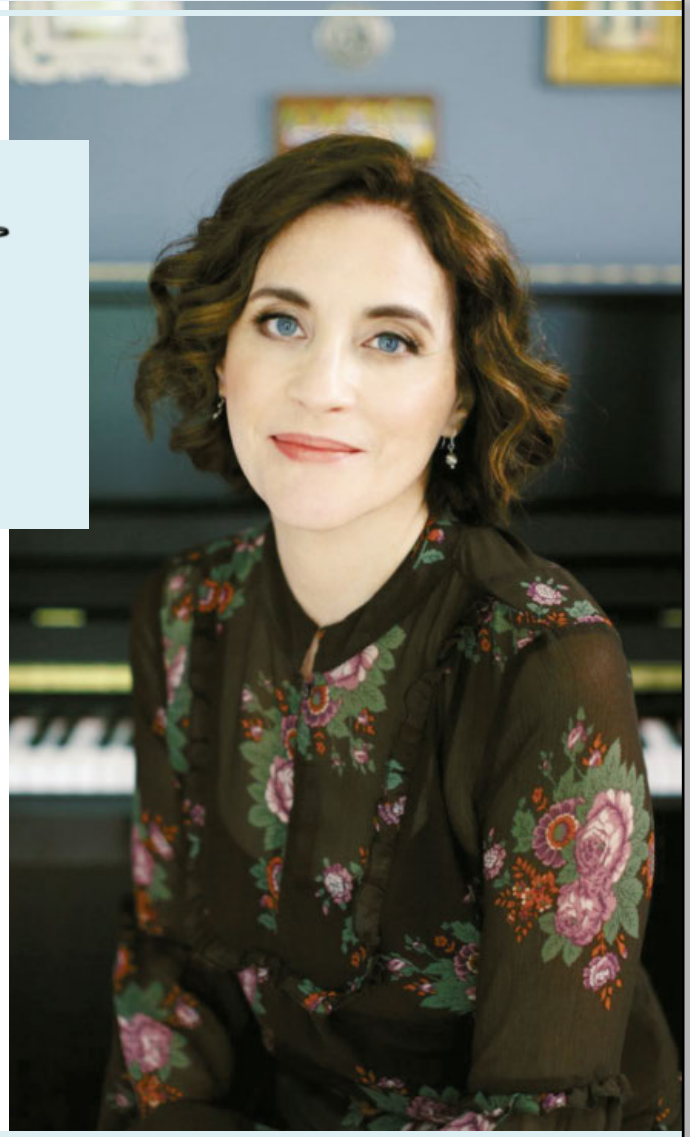
## Join Us for An Evening with Sarah Hart

March 7th • 7:00 PM

### St. Charles Parish & School

313 Circle Drive | Hartland, 53029

Please visit the parish website for  
more information.



**Free will donation  
will be collected.**

**CDs available for  
purchase.**

**All are welcome!**



## About Sarah

Sarah Hart is one of the leading figures in contemporary Catholic music today! Her songs of faith, spirit of joy, and love for teaching and leading workshops have touched the lives of thousands. In fact, we have sung many of her songs in our pews here at St. Charles!

She is a Grammy Nominee and BMI Winner, an ALA Odyssey Award Winner, and an Audie Awards Nominee. Her music has been recorded by many artists including Amy Grant, Celtic Women, Matt Maher, and The Newsboys.



### NOTICE OF NOMINATION/ELECTION PARISH TRUSTEE-TREASURER

Nominations for Parish Trustee-Treasurer position have now concluded. Paul Prah was nominated for re-election by Fr. Ken Omernick and will run uncontested the weekend of March 16 & 17. Paul Prah will be reinstated as Parish Trustee-Treasurer for another two-year term.



**This year's Butter Braid Sale runs through March 8th!** We are excited to announce that our Butter Braid Sale is back just in time for your Easter celebrations! Purchase your Butter Braids and Wooden Spoon Cookie Dough by visiting our website.

Orders will arrive just in time for Easter celebrations. Pastry and cookie dough pick up will be on Tuesday, March 19 from 4:30-6 p.m. at the West Gym entrance. Orders must be picked up that day.

Thank you for supporting St. Charles Parish and School!



### ST. CHARLES NIGHT AT CULVER'S IN HARTLAND

Monday, March 4th from 5:00-8:00 pm

Mention that you are with St. Charles, and the School receives 10% of the evening's sales! Thanks for your support!

### Bulletin Advertisers of the Week Please support our advertisers!



**Rick Kalscheuer**  
Parish Member  
MyKnowledgeBroker.com  
800.566.7007

**we know.**



Carry Out ~ Delivery ~ Catering  
262-367-2700 | FalboPizza.com  
Pizzas • Subs • Salads • Appetizers  
Located on 418 Merton Avenue off Hwy 16 in Hartland

## ST. VINCENT de PAUL SOCIETY



### FOOD PANTRY NEEDS: Chicken Broth, Beef Broth, Bags of White Rice, Oatmeal, Applesauce

In today's Gospel on the Third Sunday of Lent, Jesus is asked "What sign can you show us?" Every day we can see signs of how God has visited us in the blessings of our lives. Let us be a sign of God's love by being a blessing to others. Is there a family you know who needs assistance? Please call the St. Charles Conference of St. Vincent de Paul so that together we can be a sign of God's love to the suffering and poor.

The St. Charles SVDP Food Pantry is located at 229 Lawn Street, Hartland and it is open Tuesday mornings between 10am and noon. It is also open on the second and fourth Tuesday evenings of the month between 5:30pm and 7pm. If you are in need of assistance or know someone that is in need, please contact us at 262-367-0800.

*The food pantry will be closed when Arrowhead Schools close for inclement weather. It will open the following week, weather permitting.*



## FALL FEST ST. CHARLES PARISH

**Join our Planning  
Committee Team!**

We would like to open an invitation for parishioners to join the planning committee for the 2024 Fall Fest weekend. Our next meeting is Wednesday, March 20th at 7pm in the Parish Hall.



## FELLOWSHIP WEEKEND NEXT WEEKEND, MARCH 9 & 10

Join fellow parishioners for conversation and a donut/snack at Fellowship Weekend in the Parish Hall NEXT WEEKEND after all the Masses. A big thank you to the Thursday Morning Men's Group who will be hosting this event and for the sponsors supporting it! Members of the group will be there to answer questions and be a testament to how much this group can help in a man's faith journey. Feel free to talk to one of the members serving to find out more about the Morning Men's Group.

St. Charles 13th Annual

# Garden Club Luncheon

Saturday, March 23, 2024  
St. Charles Borromeo Room  
Doors open at 10:00 am



Zannah Crowe will be our guest speaker at this year's luncheon. Her talk will be on "Annuals and Herbs in Container Gardening." Container gardening allows us to continue to enjoy flowers and herbs even if our outdoor space is limited to a patio or balcony. A lunch of delicious salads, breads, desserts, and beverages will follow.

The cost is \$25, and forms can be found on the parish information wall or website. Please return the completed form and money to the parish office by Thursday, March 21st. For more information, please call 262-367-0800.



18<sup>TH</sup> ANNUAL CONFERENCE  
**SATURDAY 09 MARCH 2024**  
A HYBRID CONFERENCE IN PARISHES NATIONWIDE

**MEN OF CHRIST**  
LIVE YOUR FAITH BOLDLY

REGISTER @  
**menofchrist.net**



St. Charles parish participants will attend the conference with both virtual and live elements at Schoenstatt Sisters of Mary again this year. The morning will feature Mass, well-known speakers, Adoration, Confession and fellowship.

Where: Schoenstatt Sisters of Mary  
Time: 7:00am Rosary, 7:30am Holy Mass, Archbishop ListECKi presiding. The program will follow, concluding at approximately 1:00pm

Register at MenOfChrist.net or contact: Michael Jeski,  
262.402.8265 for more information.

## FLOWERS FOR THE CHURCH

The beautiful decorations in our Church during the Easter season lift our spirits closer to the Lord Jesus as we celebrate His resurrection. They help us to pray more deeply and feel closer to one another. We invite you to make an offering in memory of a loved one, in thanksgiving for a blessing in your life, for a special intention or simply as a free-will offering. We will list the names of the people remembered, the blessings recalled or the intentions held in your hearts **in the bulletin on Sunday, April 14th**. However, we will not print the donor's name nor the amount given.

**If you wish to make this offering, please fill out this form and return it with your donation to the Parish Office by Thursday, March 28th. You can also mail it to us: 313 Circle Drive, Hartland, WI 53029**

Name of Donor \_\_\_\_\_  
In Memory of those Deceased \_\_\_\_\_  
Blessing Recalled \_\_\_\_\_  
Special Intention \_\_\_\_\_  
Amount Enclosed \$ \_\_\_\_\_

PLEASE PRINT – THANK YOU







ST. CHARLES  
PARISH & SCHOOL

# A Night in Hollywood Gala

*"The moon and stars to rule the night, for his mercy endures forever."  
~ Psalm 136:9*

**Saturday, April 13, 2024**

**THE DELAFIELD HOTEL**  
415 GENESEE STREET, DELAFIELD, WI 53018

Tickets for our "A Night in Hollywood" Gala are selling quickly! Don't miss your chance to get dressed up for an evening at the Delafield Hotel in support of our parish and school!

Looking for ways to support our Gala?  
Please consider donating an auction item to help raise funds for our parish and school. Items such as sporting tickets, signed memorabilia, shows, entertainment, outdoor activities, awesome tools, golf or sports equipment and/or outings, and religious keepsakes are always greatly appreciated! Visit our website for a donation form. Items are needed by Friday, March 15.

Also, Gala raffle tickets are on sale this weekend (March 2nd & 3rd) after all Masses.

Please contact Johanna Roslawski, our Gala Chair, at [johanna@roslawski.us](mailto:johanna@roslawski.us) with any questions.



## SERVER RE-TRAINING & ORIENTATION IN NEW CHURCH

Servers (including Leads) are invited to attend re-training and orientation as we prepare for the opening of our new church!

Please visit our sign-up page on the website to register for Friday, March 15th or 22nd at 5:30 pm - 7 pm.

If you or your parents have any questions, please call Elizabeth Thompson at 262-367-6704 or email her at [ethompson@stcharleshartland.org](mailto:ethompson@stcharleshartland.org).



**REVIVAL**  
Happens Here

JULY 17-21, 2024 INDIANAPOLIS, IN

**EUCCHARISTIC CONGRESS**

Grow in your faith this summer by attending the 10th Annual National Eucharistic Congress! Join thousands of fellow Catholics from around the nation at Lucas Oil Stadium in Indianapolis from July 17-21. Space is limited, so be sure to sign up soon. To learn more and register for this year's event, please visit their website at [www.eucharisticcongress.org](http://www.eucharisticcongress.org). Many Catholics from the Archdiocese of Milwaukee are attending, including some of our parishioners!



## PREACHING WITH CHILDREN WORKSHOP

Preaching in settings with children can be one of the most difficult challenges people face. Priests, teachers, chaplains, catechists, and parents are invited to a workshop with Catholic Theologian Dr. Ann Garrido, who will introduce key characteristics of childhood and children's spirituality and present ways to reflect on Scripture through the lens of young children. The workshop will be on Saturday, April 27 from 9 a.m.-3 p.m. at Nashotah House Theological Seminary and includes lunch as well as a copy of Dr. Garrido's book "Preaching with Children." Please visit our website for more information and to sign up by noon on Friday, April 19.

# ARCHDIOCESE of MILWAUKEE SYNOD LISTENING SESSIONS

**Saturday, March 16 | 9 to 11 a.m.**  
St. Matthias Parish, Milwaukee

**Saturday, March 23 | 9 to 11 a.m.**  
Good Shepherd Parish, Menomonee Falls

In preparation for the next international Synod on Synodality, the Archdiocese of Milwaukee will be holding two listening sessions covering the theme of the relationship between laypeople and the ordained, to which all are invited. A summary of these sessions will be compiled and submitted to the United States Conference of Catholic Bishops.

**To register for a session, visit:**  
<http://tinyurl.com/yfvsthfj>



**LENT  
PREPARE  
THE WAY OF  
THE LORD**

## 2024 Women in Mission

CELEBRATING THE MISSIONARY CALL OF WOMEN

APRIL 7, 2024

SCHOOL SISTERS OF ST. FRANCIS  
1501 S. LAYTON BLVD.  
MILWAUKEE, WI 53215

1 PM- 4 PM

Join World Mission Ministries as we present the *Bridge Builder Award* and the *Being Present Award* to two women who serve with their missionary hearts.

Attendees must register using the QR code or URL.  
<http://tinyurl.com/2024wim>

ARCHDIOCESE of MILWAUKEE

*Pray, Reconcile & Rejoice*

## 12 HOURS of Reconciliation

On **Wednesday, March 20, 2024**, area priests will be available for the sacrament of Reconciliation at 11 parishes throughout the Archdiocese of Milwaukee.

[www.archmil.org/  
Pray-Reconcile-Rejoice](http://www.archmil.org/Pray-Reconcile-Rejoice)

Scan the code for more information.





**Ground Crew Service**

**Full Service Landscape Management**

**262.821.9680**

[www.groundcrewservice.com](http://www.groundcrewservice.com)

**Hartland Terrace**  
Assisted Living

- RN Lead 24-Hour Elite Care Team
- Full Continuum of Care • Memory Care
- All Inclusive Pricing • Private Studios
- Family Centered Care Model

327 North Avenue • Hartland | 262-369-4391  
[www.hartlandterrace.com](http://www.hartlandterrace.com)

**TODD WANGERIN**  
ELECTRIC, Inc.

Free Estimates - Licensed - Insured  
Over 20 years experience

Todd Wangerin 262-719-4411  
twelectric4411@att.net

**ALTERNATIVE**  
ROOFING & CONSTRUCTION

**FREE ESTIMATES!**

**LOCAL CONTRACTOR**  
414-745-3365  
[wisconsinroofers.com](http://wisconsinroofers.com)

**R&R**  
INSURANCE

**Rick Kalscheuer**  
Parish Member  
MyKnowledgeBroker.com  
800.566.7007

**we know.**

**Holzhauser, Hewett & Barta S.C.**  
Orthodontic Care For Children And Adults

Daniel Holzhauser DDS MS | Charles Hewett DDS MS | Joshua Barta DDS MS

520 Hartbrook Dr., Hartland 262-367-7076  
2316 N. Grandview Blvd, Waukesha 262-547-6365  
10225 W. Capitol Dr., Wauwatosa 414-463-5700

**IF YOU LIVE ALONE**

**MDMedAlert!**™

✓ Ambulance/Police  
✓ Family/Friends  
✓ GPS & Fall Alert

**CALL NOW!**  
**800.808.9294**

As Low As **\$19.95** mo.  
md-medalert.com

**DOES YOUR NONPROFIT ORGANIZATION NEED A NEWSLETTER?**

Engaging, ad-supported print and digital newsletters to reach your community.

**Visit [Ipicommunities.com](http://Ipicommunities.com)**

**KOWAL**  
INVESTMENT GROUP

> The Retirement Specialists

**Aaron T. Kowal, CFP®**  
W238N1660 Busse Rd., Ste. 100, Waukesha, WI 53188  
262-522-4040  
[www.kowalinvestmentgroup.com](http://www.kowalinvestmentgroup.com)

Kowal Investment Group, LLC ("Kowal") is a Registered Investment Advisor ("RIA"), with the U.S. Securities and Exchange Commission ("SEC"). Kowal provides investment advisory and related services for clients in State of Wisconsin and other states.

**BUNZEL'S OLD FASHIONED MEAT MARKET**

Fresh Custom Cut Choice Meats  
Party Trays • Catering

Thank You For Supporting A Family Tradition  
9015 W. BURLEIGH 873-7960  
[www.bunzelmeats.com](http://www.bunzelmeats.com)

**FOOT & ANKLE**  
Associates of Wisconsin

Parish Member  
Dr. Amy Galati

Call: (262) 542-3779  
[www.footandanklewi.com](http://www.footandanklewi.com)

**AMERICAN LEGION** POST 294  
231 Goodwin Ave.

Remember **VETERANS DAY**, Nov. 11th.  
Fly the Flag - Ceremonies at Post 10:30 AM

Flanagan-Dorn Post 294 of the American Legion also wishes all Vets and Members of St. Charles a **Very Happy Thanksgiving & the Merriest of Christmases**. Please remember those who currently are serving, won't you?

**See us @ [wilegion.org](http://wilegion.org)**  
**414-975-5951 or 262-549-6463**

**Culver's**  
RESTAURANT & BREWERY

701 Industrial Ct., Hartland  
262-367-5800

**TOWN BANK**  
N.A.  
A WINTRUST COMMUNITY BANK

800-433-3076  
[www.townbank.us](http://www.townbank.us)

**Palmer's STEAKHOUSE**

[www.Palmerssteakhouse.com](http://www.Palmerssteakhouse.com)  
122 E. Capitol Dr. • Hartland, WI  
262-369-3939

**MICHAEL J. FINN S.C.**  
ATTORNEY AT LAW  
PARISH MEMBER

262-367-8485  
[mjfinnsc@sbcglobal.net](mailto:mjfinnsc@sbcglobal.net)  
163 E. Capitol Dr., Hartland, WI 53029

**VISU-SEWER, INC.**  
262-695-2340

Professional Sewer Inspection, Maintenance and Rehabilitation Services

Parish Members  
[www.visu-sewer.com](http://www.visu-sewer.com)

**FALBO**  
PIZZERIA

Carry Out ~ Delivery ~ Catering  
262-367-2700 | [FalboPizza.com](http://FalboPizza.com)  
Pizzas • Subs • Salads • Appetizers

Located on 418 Merton Avenue off Hwy 16 in Hartland

**CHARLES**  
St. Charles School... We choose Christ in learning, living, & values in the light of our faith.

262-367-2040  
[www.stcharlesschoolhartland.com](http://www.stcharlesschoolhartland.com)

**JENSON MOTORS**  
Auto - Truck Repair

Hours: Mon-Fri 7:30-5:30  
Proprietor: Guy Jenson  
262-367-5556  
364 Cottonwood Ave., Hartland, WI

Compliments of:  
**Boehme & Taylor, CPAs**

**LAKE SIDE** INTERNATIONAL TRUCKS | **BADGERLAND IDEALLEASE**

Offering Wisconsin businesses transportation solutions nearly 40 years.

- Truck Sales
- Parts
- Service
- Body Shop
- Leasing & Rental

Bill Reiley, Jr. Parish Member

SERVING: Milwaukee • Madison • Racine  
West Bend • Sheboygan • Janesville • Monroe • Rockford

**EVERT-LUKO FUNERAL HOME**  
& CREMATION SERVICES

Guiding with skillful hands and soulful hearts

**262-367-2156**  
[www.evertlukofuneralhome.com](http://www.evertlukofuneralhome.com)

**PROMACH** Performance, Packaged

CL&D **\$2,000 RETENTION BONUS IN THE FIRST YEAR!**  
**\$20+/HOUR**

[cldgraphics.com/careers](http://cldgraphics.com/careers)

**KLINK'S KARPETS, INC.**  
Hartland's Floor Covering Center

Family Owned & Operated for over 47 Years

Carpeting & Hard Surfaces  
107 North Ave. Hartland, WI  
367-4670 Parish Member

**We help real estate investors invest in passive assets and defer tax.**

**If you are planning on selling your investment property, let's talk.**

**Broaching Technologies**  
Machines • Tooling • Subcontracting

Blind and Thru Hole: [www.keyway-spline-broaching.com](http://www.keyway-spline-broaching.com)  
Broaching, Splining, Keyseating, P (262) 820-1200  
Slotting, Shaping [sales@broachingtech.com](mailto:sales@broachingtech.com)

**DAVE PERRY**  
heating • cooling

Proudly Serving the Lake Country Area for more than 20 years

Heating • Air Conditioning • Geothermal  
New Construction • Replacement  
262.966.1959  
[www.daveperryheatingandcooling.com](http://www.daveperryheatingandcooling.com)

**INSIGHT**  
INVESTMENT ADVISORS

**BRANDON BRUCKMAN**  
414-882-8738  
[www.investwithinsight.com](http://www.investwithinsight.com)

**CMC**  
CUSTOM MADE CABINETS

**For All Your Remodeling Needs!**  
KITCHEN & BATH REMODELING  
COMPLETE HANDYMAN SERVICES

**JIM FISCHER**  
[fisherjames29@gmail.com](mailto:fisherjames29@gmail.com)  
414-614-7329

**Generations DENTAL**

Jim Muenzenberger, D.D.S.  
and Kelly Newman, D.D.S.  
Parish Members

139 E. Capitol Dr. Hartland, WI 53029  
Office 262-387-2750  
[GenerationsDentalHartland.com](http://GenerationsDentalHartland.com)

**Sprung Heating & Pump Service LLC**  
[www.sprungheating.com](http://www.sprungheating.com)

HVAC • Plumbing • Well Pumps • Generators

Karl Sprung  
Office 262.538.3853  
PO BOX 3024 Hartland, WI 53029

**Lake Country Eye Care**

580 Hartbrook Dr. • Hartland, WI  
Amber A. Dentz, OD - Parishioner  
[www.lakecountryeyecare.com](http://www.lakecountryeyecare.com)  
262-367-6610



Helping you achieve financial dreams



**James Dunn**

Managing Director – Financial Advisor

(262) 395-1101

www.dunninvestmentmanagement.com



**Mulch • Firewood • Nursery**

**262-777-1523**

W275N7813 Lake Five Rd Hartland, WI

LakeFiveSupply.com



brennafischer.glossgenius.com

**REICHL & KOLSTAD**  
**ORTHODONTICS**



Dr. Peter Reichl &  
Dr. James Kolstad  
look forward to  
meeting you!

Offering Traditional Braces & Invisalign

Located in Waukesha,  
Mukwonago & Hartland

**262-547-2827**

www.ReichlKolstadOrtho.com

**WISE**  
DESIGN BUILDERS  
**262-790-4444**  
Parish Members  
www.wisedesignbuilders.com



Lake Country Remodeling Specialist



**262-966-9000**

1 Mile East of North Lake

**CARPET PLUS, INC.**

We Bring the Showroom to You!

(414) 573-0105

Proudly Serving Crusader Nation for over 25 years!

Dan Taylor, Parish Member



**Emanuele &  
Haut, CPAs, SC**

Certified Public  
Accountants

142 E. Capitol Dr.  
Hartland, WI

Parish Member  
**262.367.1040**  
sam@ehcpas.com



**COURI  
INSURANCE  
AGENCY**

Protection for the Unexpected™

Coverages  
**IMPORTANT**

Pricing  
**IMPORTANT**

Low Costs

**GREAT COVERAGES**

Jerry & Judie Couri

**262-548-8077 • couri.com**

**DON CULL EXCAVATING**

W298 N9248 Center Oak Rd

Septic & Mound Systems Grading

**966-7038**

MPRS 221589



Corporate Contractors Inc.  
CCIWI.COM



Angela Isherwood  
Owner &  
Luxury Travel Designer  
Parishioner  
**262.229.9271**  
Angela@OliveAndAtlasTravel.com

www.OliveAndAtlasTravel.com



PIZZA • FRIDAY FISH FRY • SANDWICHES  
\*\$5.00 OFF ANY 16" PIZZA  
\*SUNDAY'S "KIDS EAT FREE" WITH  
ADULT PURCHASE  
We do Parties & Catering!  
Not valid with any other offers or coupons  
**369-0079**  
300 COTTONWOOD • HARTLAND  
PARISH MEMBER

**PASTERNAK & ZIRGIBEL SC**

FRANK PASTERNAK, PARISH MEMBER

BEST LAWYERS IN AMERICA  
TOP 50 WISCONSIN SUPER LAWYERS  
BEST LAW FIRMS U.S. NEWS & WORLD REPORT  
(262) 785-0802 injurywisconsin.com



**OFFICE FURNITURE WAREHOUSE®**

New & Preowned Office Furniture

Design, Delivery, Installation, & Liquidation Services

Elijah Walters (262) 719-8621

ofwgo.com

**The GOOD  
DENTIST**

Dr. Marta Ostromecki, DDS Parishioner

**(262) 223-3169**

www.tgdentist.com

Always Accepting New Patients

N67W28025 Sussex Rd., Suite 100, Hartland, WI



Specializing in Masonry  
Residential & Commercial  
W300 N7741 Christine Ln., Hartland, WI 53029  
Robert J. Paun (262) 326-8043  
www.paunconstruction.com  
mail@paunconstruction.com



Station Hartland  
Offering a variety of Pernat  
and Leroy Meats products  
Walk-in Beer cave  
301 E. Capitol Dr Hartland WI  
Mon-Sat: 5AM-10PM Sun: 6AM-9PM  
Stop in and ask about our Loyalty Program



262.691.3964 www.plmpaving.com

**What Will Be Your Legacy?**

If you value your faith and your family, I welcome the opportunity to share my faith-based perspective in union with my financial experience in order to co-create a personal legacy strategy. I can assist with: Portfolio Management | Retirement Planning | Financial & Legacy Strategies | Special Needs Planning



Parishioner

**Kurt Maltby, CFP®, ChSNC®**  
CERTIFIED FINANCIAL PLANNER™  
Assistant Vice President, Financial Advisor

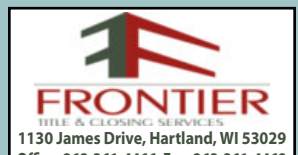
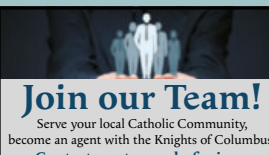
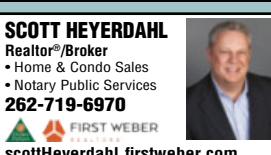
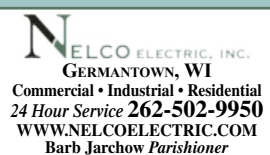
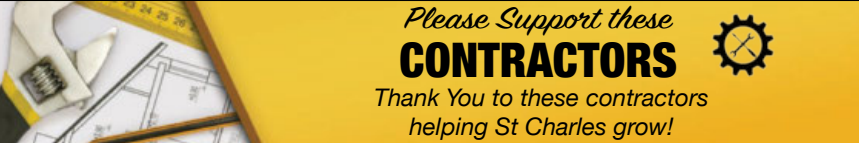
**Morgan Stanley**

20975 Swenson Drive, Waukesha

Phone: (262) 523-8303 | NMLS # 1504808

advisor.morganstanley.com/the-riverwood-wealth-management-group

Morgan Stanley and its Financial Advisors do not provide tax or legal advice. Individuals should seek advice based on their particular circumstances from an independent tax advisor. Morgan Stanley Smith Barney LLC. Member SIPC. CIRC818048 08/18



For ad info. call 1-800-950-9952 • www.4lpi.com

St. Charles Catholic Church, Hartland, WI

A 4C 01-0639