

March 8, 2026  
THIRD SUNDAY OF LENT



Alexandria Grace T.  
Daughter of Ross & Brianna T.



Lily Cecelia G.  
Daughter of Patrick & Alexis G.



Tori Allison S.  
Daughter of Travis & Kasey S.



Raelyn Marie B.  
Daughter of Daniel & Sarah B.



Lily Cecilia M.  
Daughter of Ben & Meghan M.

Celebrating the  
*Sacrament of Baptism*  
Congratulations to our newest members and their families!



# WELCOME TO ST. CHARLES - WE ARE HERE FOR YOU



PASTOR  
Fr. Ken Omernick



ASSOCIATE PASTOR  
Fr. Aaron Siehr

## ST. CHARLES STAFF TEAMS

### CONTACT PASTOR THROUGH ASSISTANT:

Terrie Carew, Ext. 224, [tcarew@stcharleshartland.org](mailto:tcarew@stcharleshartland.org)

### ASSOCIATE PASTOR:

Fr. Aaron Siehr, [asiehr@stcharleshartland.org](mailto:asiehr@stcharleshartland.org)

### TEACHING PARISH SEMINARIANS:

Timothy Heyrman, [theyrman@sfs.edu](mailto:theyrman@sfs.edu)

Jake Lozon, [jlozon@sfs.edu](mailto:jlozon@sfs.edu)

### SCHOOL TEAM 262-367-2040

Principal/School Team Lead: Dan Garvey, Ext. 208,  
[dgarvey@stcharleshartland.org](mailto:dgarvey@stcharleshartland.org)

School Administrative: Lisa Moehrke, Ext. 207,  
[school@stcharleshartland.org](mailto:school@stcharleshartland.org)

School Administrative: Karen Dejewski, Ext. 206,  
[kdejewski@stcharleshartland.org](mailto:kdejewski@stcharleshartland.org)

School Administrative: Nina Wolf, Ext. 218,  
[nwolf@stcharleshartland.org](mailto:nwolf@stcharleshartland.org)

School Administrative: Cindy Hinca, Ext. 218,  
[chinca@stcharleshartland.org](mailto:chinca@stcharleshartland.org)

### WORSHIP TEAM

Director of Worship: Peg Kasun, Ext. 225,  
[pkasun@stcharleshartland.org](mailto:pkasun@stcharleshartland.org)

Director of Music: Dr. Aaron Mathews, Ext. 229,  
[amathews@stcharleshartland.org](mailto:amathews@stcharleshartland.org)

Director of Liturgy: Elizabeth Thompson, M.Div.,  
262-367-6704 [ethompson@stcharleshartland.org](mailto:ethompson@stcharleshartland.org)

Worship Associate/ Baptism Coordinator: Jacqueline Bernard,  
Ext. 205 [jbernard@stcharleshartland.org](mailto:jbernard@stcharleshartland.org)

Wedding Coordinator: Dee Anne Hamer, Ext. 219,  
[dhamer@stcharleshartland.org](mailto:dhamer@stcharleshartland.org)

### DISCIPLESHIP TEAM

Director of Student Discipleship: Tiffany Topel, Ext. 209,  
[ttopel@stcharleshartland.org](mailto:ttopel@stcharleshartland.org)

Director of Evangelization: Valerie Winkel, Ext. 220,  
[vwinkel@stcharleshartland.org](mailto:vwinkel@stcharleshartland.org)

Children's Discipleship Lead: Shelly Buchan, Ext. 221,  
[sbuchan@stcharleshartland.org](mailto:sbuchan@stcharleshartland.org)

Student Discipleship Lead: Bri Thomson, Ext. 209,  
[bthomson@stcharleshartland.org](mailto:bthomson@stcharleshartland.org)

Student Discipleship Coordinator: Caroline Coiner, Ext. 209,  
[ccoiner@stcharleshartland.org](mailto:ccoiner@stcharleshartland.org)

Catechesis of the Good Shepherd Staff: Sharon Tobolski,

Ext. 221, [stobolski@stcharleshartland.org](mailto:stobolski@stcharleshartland.org)

Catechesis of the Good Shepherd Staff: Erika Wood,  
Ext. 221, [ewood@stcharleshartland.org](mailto:ewood@stcharleshartland.org)

### OPERATIONS TEAM

Director of Finance & Human Resources: Celia Meyers,  
Ext. 216, [cmeyers@stcharleshartland.org](mailto:cmeyers@stcharleshartland.org)

Director of Operations: Mike Cattani, Ext. 201,  
[mcattani@stcharleshartland.org](mailto:mcattani@stcharleshartland.org)

Maintenance Manager: Tim Orzechowski, Ext. 217,  
[torzechowski@stcharleshartland.org](mailto:torzechowski@stcharleshartland.org)

Accounting: Dee Anne Hamer, Ext. 219,  
[dhamer@stcharleshartland.org](mailto:dhamer@stcharleshartland.org)

Phase III Cornerstone: Brenda Zingsheim, Ext. 231,  
[bzingsheim@stcharleshartland.org](mailto:bzingsheim@stcharleshartland.org)

Safeguarding: Karen Dejewski, Ext. 206,  
[kdejewski@stcharleshartland.org](mailto:kdejewski@stcharleshartland.org)

### COMMUNICATIONS & STEWARDSHIP TEAM

Director of Communications & Stewardship: Allison Caswell,  
Ext. 202, [acaswell@stcharleshartland.org](mailto:acaswell@stcharleshartland.org)

Assistant to the Pastor: Terrie Carew, Ext. 224,  
[tcarew@stcharleshartland.org](mailto:tcarew@stcharleshartland.org)

Communications & Stewardship Coordinator: Lucca Kenyon,  
Ext. 210, [lkenyon@stcharleshartland.org](mailto:lkenyon@stcharleshartland.org)

Administrative: Kathy Gillstrom, Ext. 200,  
[kgillstrom@stcharleshartland.org](mailto:kgillstrom@stcharleshartland.org)

Administrative/Hospitality Lead: Mary Jo Romportl, Ext. 212,  
[mjromportl@stcharleshartland.org](mailto:mjromportl@stcharleshartland.org)

PARISH OFFICE: 262-367-0800,

Mon. - Fri., 8 am - 4 pm

EMAIL US: [parish@stcharleshartland.org](mailto:parish@stcharleshartland.org)

PARISH SCHOOL: 262-367-2040

[school@stcharleshartland.org](mailto:school@stcharleshartland.org)



WEBSITE: [www.stcharleshartland.org](http://www.stcharleshartland.org)

LIVESTREAM: Scan QR code  
with phone camera

# WELCOME TO ST. CHARLES - WE ARE HERE FOR YOU

SATURDAY VIGIL MASS: 5:00pm

SUNDAY MASS TIMES: 7:00am, 9:00am, 11:00am & 6:00pm

DAILY MASS: Monday - Saturday: 8:30am

## EUCCHARISTIC ADORATION

We offer Adoration from Mondays at 5:00 a.m. through Saturday mornings at 10:00 a.m.

For current openings, please see our website.



## RECONCILIATION

**Saturdays: 9:30am - 10:30am (two Priests)**

**Thursdays: 5:00pm - 6:00pm (one Priest)**

**Please arrive within 30 minutes of the start time.**

## SACRAMENT OF THE SICK/ ANOINTING MASSES

Sacrament of the Sick Masses are the 2nd and 4th FRIDAYS of every month or by appointment with Fr. Ken or Fr. Aaron (call the Parish Office).

## BAPTISMS

If you are inquiring about having your child baptized, please call 262-367-0800 ext. 205 or email baptisms@stcharleshartland.org.

## OUTREACH SERVICES

Contact the Parish Office at 262-367-0800.

TO ASK FOR PRAYERS or to be added to the email list, please email: prayernetwork@stcharleshartland.org

FOR EMERGENCY PRAYERS, please email:

emergencyprayers@stcharleshartland.org

Printed weekly prayer sheets are available on the information wall.

ST. VINCENT DE PAUL: if you need food, shelter or assistance call 262-367-0800 (Parish Office)

## NEED HOME COMMUNION:

For information call 262-367-0800 (Parish Office)

## Mass Intentions for the Week of March 8



### Sunday, March 8

7:00 am † Living & Deceased Members of St. Charles  
 9:00 am † Irene Vlach  
 11:00 am † Jean K. Schlundt  
 6:00 pm † David Leaman

### Monday, March 9

6:30 am † John Shannon  
 8:30 am † Ronald Lorenz

### Tuesday, March 10

6:30 am † Roger & Sandra Powers  
 8:30 am † Michael Spencer

### Wednesday, March 11

6:30 am † Karl Scholz  
 8:30 am † Anthony Bertucci

### Thursday, March 12

6:30 am † Ernie & Jean Alexander  
 8:30 am † Jim O'Connor

### Friday, March 13

6:30 am † James Flock  
 8:30 am † Joseph Geason

### Saturday, March 14

8:30 am † Eva, Josef & Paul Lotz  
 5:00 pm † Edwin Miller

### Sunday, March 15

7:00 am † Norbert & Joseph Seipel  
 9:00 am † Living & Deceased Members of St. Charles  
 11:00 am † Gladys Angulo  
 6:00 pm † Patricia McCarthy

Please pray for the repose of the souls of

**Wilma Griffin & James Cochrane**

May their souls and the souls of all the faithfully departed

REST IN CHRIST'S PEACE.

One of the easiest ways to support St. Charles Parish and School is through the secured online e-giving system.



PARISH SUPPORT  
THRU FEBRUARY 8

FISCAL YEAR  
JULY 1 THRU JUNE 30

### 2025-2026

Envelopes..... \$37,345.00  
 Offertory..... \$2,886.76  
 Weekend Total ..... \$40,231.76  
 E-Giving ..... \$15,048.50  
 YTD ..... \$1,928,710.28

### 2024-2025

Envelopes..... \$24,097.00  
 Offertory..... \$2,824.61  
 Weekend Total ..... \$26,921.61  
 E-Giving ..... \$14,457.50  
 YTD ..... \$1,775,519.47



©LPi

**THIS WEEKEND'S GOSPEL MEDITATION**

John 4:5-42

Recently I received a note from a teenager I met years ago. He wrote, "Dear Father Muir, you probably do not remember me, but I wanted to thank you for your inspiring and humorous homilies at the parish. They helped me appreciate the beauty of Catholicism, which I have now embraced in a personal way." That small note moved me more than he probably imagined. I had no idea my words had taken root in him. I was simply sowing seeds — week by week, Mass by Mass. Someone else — his parents, a youth minister, or God Himself — was doing the deeper work. Now this young man is joyfully reaping a harvest of faith.

In today's Gospel, Jesus offers living water to a Samaritan woman whose life had been full of searching and disappointment. By the end of their encounter, she becomes a bold and joyful evangelist. Then Jesus turns to his disciples and says something easily overlooked: "One sows and another reaps" (John 4:37). He is helping them — and us — understand how evangelization works. Often, the one who sows the seeds of faith is not the one who sees the fruit.

This Lent, ask yourself: Are you in a sowing phase or a reaping phase? If you are sowing — raising children, praying for someone, mentoring — be patient. Your work matters. If you are reaping — seeing someone come alive in faith — be grateful. You are standing on sacred ground, tilled and watered by others.

Lenten challenge: Thank someone who once sowed faith into your life. And keep sowing, even when the harvest is unseen.

— Father John Muir

©LPi

**PRAY WITH SCRIPTURE**  
Lectio Divina

15 minutes each day spent in God's presence — reading, reflecting, responding and resting with his Word — adds up to 90 hours in one year. That is time well spent and a testimony to how a little at a time turns into something remarkable!

**Sunday, March 15th Readings**

1 Sm 16:1b, 6-7, 10-13a/Ps 23:1-3a, 3b-4, 5, 6/Eph 5:8-14/Jn 9:1-41 or 9:1, 6-9, 13-17, 34-38

To find readings for the weekdays and/or Feast Days, please visit <https://bible.usccb.org/bible/readings>.

**Reflection questions for Sunday, March 15th**

- Samuel does not expect the Lord to anoint the young David as Israel's next king. When have you been surprised by God doing something unexpected in your life?
- Paul expects the believers in Ephesus to live as children of light and learn what is pleasing to the Lord. What could you do this week that is pleasing to the Lord?
- Jesus' healing of the blind man causes confusion and even anger to those who do not see him as the Christ. Have you seen or felt God's presence in this season of Lent?



**READ. REFLECT. RESPOND. REST.**

*Cut out and keep in your Bible for reference!*



**FELLOWSHIP WEEKEND RETURNS**

The Hospitality Team invites you to share a new menu of food and beverages after Masses on March 21-22!

How about pizza after 5pm and 6pm Masses? Breakfast items on Sunday morning will include donuts as well as other offerings.

We hope to see you there!

**GARDEN CLUB LUNCHEON**

Save the date for the Garden Club Annual Luncheon on Saturday, April 18 beginning at 10:00am in the Borromeo Hall.

Registration information will be coming soon!

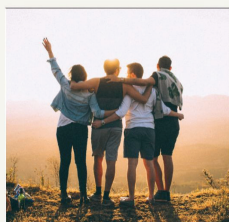
**2027 MASS INTENTION BOOK  
OPENING MARCH 9**

The 2027 Mass Intention Book will open on Monday, March 9.

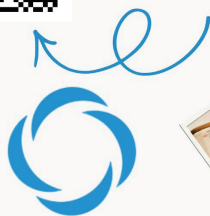
Here at St. Charles, a Mass Intention for deceased persons can be reserved through the Parish Office. They are available for all weekend and daily Masses for an offering of \$20.00.

For more information, contact the Parish Office at 262-367-0800, extension 200.

**9TH & 10TH GRADE  
LIFE TEEN  
END OF YEAR RETREAT  
SATURDAY, MAY 2ND  
9:30 AM - 5:30 PM**



SCAN HERE TO  
SIGN UP!  
FREE TO ATTEND!



Contact Caroline Coiner  
(ccoiner@stcharleshartland.org) for more information.

**STATIONS OF THE CROSS**

The Stations of the Cross will be prayed every Friday at 7pm in the church until Friday, April 3. We invite you to join us as we prepare our hearts for Jesus' Passion, Death, and Resurrection.



**NOTICE OF NOMINATION/ELECTION**  
*Parish Trustee-Treasurer*

St. Charles Parish trustees are elected for two-year terms. Our Trustee-Treasurer Paul Prahls term is due for renewal. Fr. Ken has formally nominated him to another term. Paul has graciously accepted Fr. Ken's nomination. This renewal is because Paul has been instrumental in the business operations of St. Charles Parish as well as advancing the mission and goals of our community.

Parishioners, however, may nominate fellow parishioners for this position. Please call the Parish Office for information and qualifications of nominees. Nomination forms are due March 20, 2026.

**SMALL GROUP UPDATE**

Are you a mom to a child who is neurodivergent or disabled? All children, regardless of ability, are part of the body of Christ, and St. Charles welcomes and includes you. A new small group is being formed to support you on this journey.

Please contact Valerie Winkel at [vwinkel@stcharleshartland.org](mailto:vwinkel@stcharleshartland.org) for more information!

**MEET. KNOW. LOVE. SERVE.**

I have been a St. Charles parishioner for 45 years. I have seen this church change and grow bigger and stronger. It makes me happy, even grateful, to be a part of the St. Charles Parish Community.

St. Charles is not just a place to go to worship but also a place to get involved by volunteering in the many ministries and social groups offered here. Some of these ministries include the community meal, hospitality, and small group Bible study. There is so much to choose from and such little time.

Volunteering isn't just giving my time, it's meeting new people and making new friends. And yet, the most beautiful and precious of all that I get from my church is the Holy Eucharist, that special grace offered by God, given to me!

St. Charles is my home away from home.

- Merry Kempen



**ADORATION OPENINGS**

- Mondays: 8am
  - Tuesdays: 1am, 2am, 11pm
  - Wednesdays: 8am, 10pm, 11pm
  - Thursdays: Noon, 8pm, 11pm
  - Fridays: Midnight, 2am, 1pm, 5pm, 7pm, 10pm
  - Saturdays: Midnight, 1am, 2am, 3am
- Please see our website to sign up.



**GROWING ADORATION HOURS**

We hope to extend our Adoration hours to span the entire day each Saturday. If you are interested in signing up for a time slot, please visit our website.

Save 20% with code **STCH2026**

# BUILDING MEN OF VIRTUE

14 MARCH 2026 | MILLER HIGH LIFE THEATRE

For questions or help with registering, contact Tom O'Brien at

**REGISTER AT MENOFCHRIST.NET**

The Knights of Columbus Kettle Moraine Council #3562 has graciously organized bus transportation to the Men of Christ Conference.

The bus will leave St. Charles Parish at 7:00am and leave Milwaukee at 5:30pm. You must register if you are going to take the bus. Please note there are 72 seats.

Please scan the QR code to sign up.



## WOMEN'S STATIONS OF THE CROSS

We invite you to join us at 10:30am on Thursday, March 26 in the church.

Hosted by our Women's Ministry, we will reflect on the Stations of the Cross through the lens of Mary, Our Mother.

We hope you prayerfully consider attending this beautiful prayer invitation.




## LENTEN RECONCILIATION SERVICES

During the Lenten season there are extended Reconciliation hours in addition to the normal times.

**EXTENDED HOURS**

- Thursday, March 12 from 5:00-7:00pm
- Saturday, March 28 from 9:30-11:30am.



# Help the Handmaids Come to Milwaukee

## Who We Are

The Handmaids of the Heart of Jesus live in imitation of Mary and serve as spiritual mothers in local parishes through apostolates such as teaching in Catholic schools, family ministry, Catechesis of the Good Shepherd, and retreats for women. They hope to send sisters to serve in the Archdiocese of Milwaukee in the fall of 2027.

## How to Help

Please consider making a gift toward our home in Milwaukee

### FUNDRAISING GOAL: \$5.5 MILLION

Includes:

- Purchase of property and land
- Updating roof, heating system, windows, flooring, lighting, and electrical
- Chapel design and furnishings




217 N. 68<sup>th</sup> Street

Donations can be made online or by mail | Handmaids of the Heart of Jesus | 515 N State Street | New Ulm, MN 56073

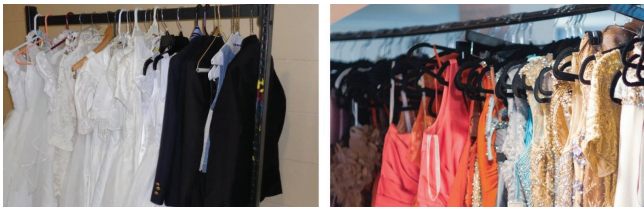


handmaidsoftheheartofjesus.org/milwaukee | handmaids1@gmail.com | (507) 276 - 9128



OUTREACH  
SERVICES  
TEAM

## PROM & COMMUNION CLOTHING DRIVE



Help us collect gently used clothing for St. Anthony's School in Milwaukee! The Outreach Services Team will be collecting items in the narthex after all Masses March 14 - March 15.

### Collecting:

- Formal/prom dresses (all sizes and lengths)
- Boys and girls First Holy Communion clothing

Contact Amy Marshall at [amy.marshall137@gmail.com](mailto:amy.marshall137@gmail.com) with any questions.

## LA SAGRADA FAMILIA REFLECTION

Hello, my name is Linda Kroll, a fellow parishioner of St. Charles. I had the privilege of taking part in the mission trip to La Sagrada Familia, our sister Parish in the Dominican Republic, in November 2025.

After praying for discernment and the promptings of friends, I decided to go and I am very glad I did!

To witness firsthand what the donations from generous people at St. Charles have made possible for those who have so little is humbling and amazing!

Most impressive is the new medical clinic which is close to the complex. Right now they use a small gym with make-shift equipment and a primitive system in place. This clinic will serve so many more in need of care.

The highlight of the trip for me was taking part in the Mass and the Eucharist every day in the small but beautiful churches in the region. The people are warm, kind, and generous. Fr. Aaron and Fr. Javier (the pastor) were such wonderful guides both physically and spiritually.

The accommodations provided were great, the food was amazing, the fellowship was inspiring, and the memories were priceless! I encourage anyone who feels the calling to take part- you won't regret it.

## BLESSING & OPENING OF NEW HEALTH CENTER

Father Javier has asked us to say a prayer on Sunday, March 8 to St. John of God, patron saint of hospitals, nurses, and the sick, as the new health center opens at La Sagrada Familia in the Dominican Republic.

## BREAD OF LIFE COMMUNITY MEAL COMING TO A CLOSE

Dear Bread of Life Meal Guests,

We thank you for your continued support and attendance at the Bread of Life Meals throughout the years. It has been a true blessing to gather together, break bread, and enjoy fellowship and hospitality as one community.

**At this time, the Bread of Life Community Meals will be coming to a close as we look at other possibilities to serve those in our community. Our final meal will be held on Thursday, March 26th in the Borromeo Hall. Blood pressure checks are available beginning at 4:00pm and the meal will begin at 5:30pm.**

While this chapter is ending, we continue to value your engagement and presence. We invite you to stay engaged in our parish community in other ways. Whether that be joining a small group, attending Fellowship Weekends, volunteering, or being engaged in other avenues, we would love to maintain the relationships that have been built as a result of these meals.

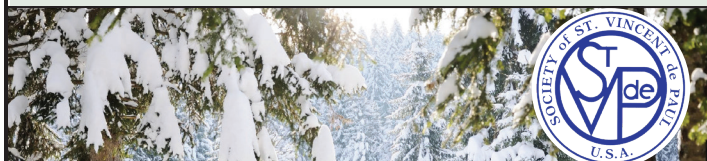
We also extend our deepest appreciation to the various ministries that helped to support these meals.

## CONTACT OUTREACH SERVICES TEAM

If you would like to volunteer for any Outreach Services Team initiatives, please scan the QR code, visit [stcharleshartland.org/serve-our-community/](http://stcharleshartland.org/serve-our-community/) or email [humanconcerns@stcharleshartland.org](mailto:humanconcerns@stcharleshartland.org) for more information.



## ST. VINCENT de PAUL SOCIETY



### FOOD PANTRY NEEDS: Cereal, Small Jars of Mayo, Ragu Spaghetti Sauce (Variety of Flavors)

In today's Gospel on the Third Sunday of Lent, Jesus says, "My food is to do the will of the one who sent me and to finish His work." This Lent we are called to cultivate and fertilize our spiritual lives through prayer, fasting and almsgiving. Through your almsgiving and donations of food to the SVDP Pantry, you are doing the will of the Father and finishing the work of Jesus.

During the month of January we assisted 81 families, and in February we assisted 84 families at the SVDP Food Pantry.

The St. Charles SVDP Food Pantry is located on the church grounds at 313 Circle Drive, and it is open Tuesday mornings between 10am and noon. It is also open on the second and fourth Tuesday evenings of the month between 5pm and 6:30pm (new evening times).

*The food pantry will be closed when Arrowhead Schools close for inclement weather. It will reopen the following week, weather permitting.*

**ST. VINCENT DE PAUL DONATION BIN**



There is now a St. Vincent de Paul bin in the northwest corner of the parking lot for you to drop off donations. Donations of shoes, books, and clothing are welcome.

**Please do not donate anything else such as TVs, computers, appliances, or furniture.**

Thank you for your generosity!



**ST. CHARLES DINING OUT!**

**Qdoba in Delafield  
Tuesday, March 17 from 4-8pm**

In order for us to receive proceeds from this fundraiser, you must present the flyer in store or use the promo code on the flyer for online orders. We will receive 25% of sales that evening. Treat your family for Taco Tuesday while supporting our school!

Please visit our website for the flyer.



**2026 SPRING SEMESTER**

**SUNDAY EVENINGS  
4:30-6:00**

Invitation: After EDGE  
on Sundays, come to  
Mass @ 6 PM

- MARCH 15**
- MARCH 22**
- APRIL 12**
- APRIL 19**
- APRIL 26**

Contact Bri Thomson at [bthomson@stcharleshartland.org](mailto:bthomson@stcharleshartland.org) for more information.



**ST. JOSEPH  
ADOPTION NOVENA**

March 10-18, 2026

Invoking the intercession of St. Joseph, foster father of Jesus, we pray for all whose life stories include adoption. Each day includes short Scriptural passages and prayers with focuses on a different group of people who are involved in the adoption process.

Participants can download the novena or sign up to receive the daily prayers via email or text message by visiting [respectlife.org/adoption-novena](http://respectlife.org/adoption-novena).



**BUTTER BRAID SALE**

We are excited to announce that our Butter Braid sale is back again this year just in time to get your goodies for your Easter celebrations!

Purchase your Butter Braid pastries and Wooden Spoon Cookie Dough through Saturday, March 21st. All orders need to be picked up on Thursday, March 26th from 4:30-6:00 pm.

Please scan the QR code to place an order.



**BULLETIN DUE DATES!**

If you have an event(s) you would like to publicize in the upcoming bulletins, please email your information by 8:00 am on the due dates listed below to [lkenyon@stcharleshartland.org](mailto:lkenyon@stcharleshartland.org).

- March 15th bulletin is due Monday, March 9th
- March 22nd bulletin is due Monday, March 16th

**BULLETIN ADVERTISERS OF THE WEEK**

Please support our advertisers!

**CARPET PLUS, INC.**  
We Bring the Showroom to You!  
(414) 573-0105  
Proudly Serving Crusader Nation for over 25 years!  
Dan Taylor, Parish Member

**Lake Five**  
LANDSCAPE SUPPLY LLC  
Mulch • Firewood • Nursery  
262-777-1523  
W275N7813 Lake Five Rd Hartland, WI  
[LakeFiveSupply.com](http://LakeFiveSupply.com)



ST. CHARLES  
*Roman Holiday Gala*  
 Saturday, April 18th, 2026  
 Delafield Hotel

**VOLUNTEER WITH US**

All roads lead to Rome... and we need you to help guide the way!

With this year's reimagined Roman Holiday Gala, we're looking for volunteers to help before the event as dessert dash bakers, auction organizers/runners, and the night of as registration helpers or Roman "tour guides" keeping the evening lively and seamless. Scan the QR code to sign up.

**Don't wait on your tickets!** Enjoy an immersive Roman celebration with Fr. Ken and Mr. Garvey, featuring music by Dr. Mathews.

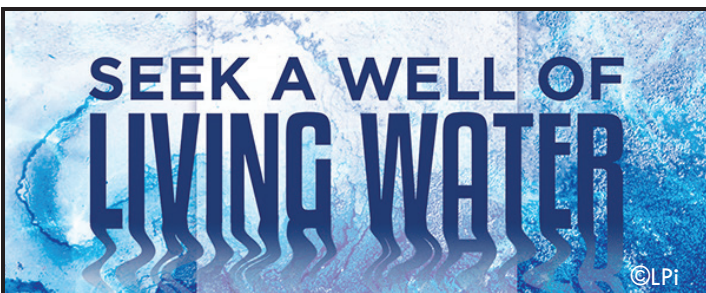
**Donate. Attend. Sponsor. Celebrate!**

Please visit [stcharleshartland.org/gala-homepage/](http://stcharleshartland.org/gala-homepage/) for more information.



**SWEET DREAMS DINING OUT**

Hungry? Mark your calendars to visit Sweet Dreams in Hartland! Please stop by on **Tuesday, March 10th** and let staff know you are there for St. Charles' Dining Out. We will receive 15% of sales that day.



Knights of Columbus Council 3562

**2nd Annual KNIGHTS OF COLUMBUS SCHOLARSHIP**

**OPEN TO 8TH GRADERS!**

Are you eligible?

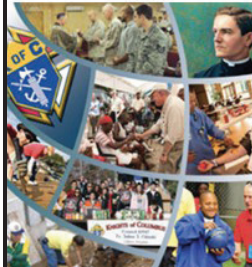
**UP TO FOUR**

**Requirements:**

- ✓ You're a current 8th grader
- ✓ Will attend a Catholic high school
- ✓ Current member of one of the six Council 3562 Lake Country parishes

**\$1,000**

**SCHOLARSHIPS AVAILABLE!**



**Important Dates**



- ✓ Applications will be accepted from February 1st through April 1st, 2026
- ✓ Go to the following website for details, criteria, and application:

[kc3562.org/scholarship](http://kc3562.org/scholarship)

Knights of Columbus Council #3562 is offering their 2nd annual 8th Grade Scholarship.

Four \$1,000 scholarships will be awarded to graduating 8th graders who are members of this parish and will be attending a Catholic high school as a freshman in the Fall of 2026.

Details, criteria, and application can be viewed at [kc3562.org/scholarship](http://kc3562.org/scholarship). The application submission website will be open through April 1st.



**SCHOOL MISSION STATEMENT**

*St. Charles Parish School in Hartland, Wisconsin nourishes and grows a vibrant Catholic community committed to innovation, responsiveness and compassion as it prepares and challenges students in their intellectual, spiritual and moral lives.*



Join us in praying and fasting for an end to abortion in your community until March 29. You are also invited to stand and peacefully pray during a 40-day vigil in the public right-of-way outside the Waukesha Planned Parenthood (426 W. Main St., Waukesha) for an hour between 8am and 7pm. Your prayers, fasting and witness change hearts.

For more information visit [40daysforlife.com/waukesha](http://40daysforlife.com/waukesha) or call Bill at 262-894-3247.

**"Next Chapter Ministry"**  
Celebrating in the Gospel Experience

St. Martin de Porres Church  
3114 N. 2<sup>nd</sup> Street, Milwaukee, WI

Dates: Friday, March 20 (6-8pm); Saturday, March 21 (6-8pm); and Sunday, March 22 (9am Mass with a reception)

Presented by The Black Catholic Men's Group of Milwaukee. Questions? Call Steve Teasley at 262.617.8485



On Wednesday, March 25, 2026, area priests will be available for the Sacrament of Reconciliation at 11 parishes throughout the Archdiocese of Milwaukee. Check below for the current schedule. Some sites will likewise offer Reconciliation in Spanish.

**ST. PETER PARISH**  
200 E. Washington St., Slinger • 9 a.m. - 6 p.m.

**HOLY FAMILY PARISH**  
271 Fourth Street Way, Fond du Lac • 8 a.m. - 8 p.m.  
6-8 p.m. (Spanish)

**OUR LADY OF MT. CARMEL PARISH**  
5400 19th Ave., Kenosha • 8 a.m. - 8 p.m.

**ST. MONICA PARISH**  
5681 N. Santa Monica Blvd., Whitefish Bay  
9 a.m. - 8 p.m.  
3-8 p.m. (Spanish)

**ST. MARGARET MARY PARISH**  
3970 N. 92nd St., Milwaukee • 10 a.m. - 8 p.m.  
4-6 p.m. (Spanish)

**BASILICA OF ST. JOSAPHAT**  
601 W. Lincoln Ave., Milwaukee • 9 a.m. - 9 p.m.  
(English and Spanish)

**ST. MATTHIAS PARISH**  
9306 W. Beloit Road, Milwaukee • 8 a.m. - 8 p.m.

**ST. PAUL THE APOSTLE PARISH**  
6400 Spring St., Racine • 7 a.m. - 7 p.m.  
3-7 p.m. (Spanish)

**ST. THOMAS AQUINAS PARISH**  
305 S. First St., Waterford • 9 a.m. - 8 p.m.  
(English and Spanish)

**ST. DOMINIC PARISH**  
18255 W. Capitol Drive, Brookfield • 8 a.m. - 8 p.m.  
10 a.m. - 2 p.m. (Spanish)

**ST. JEROME PARISH**  
995 S. Silver Lake St., Oconomowoc • 8:30 a.m. - 6:30 p.m.



Scan for more information.



**DRIVE-THRU CHILI FUNDRAISER**

The School Sisters of St. Francis are accepting orders for their first drive-thru chili fundraiser. Order by this Monday, March 9 for pickup on Thursday, March 19 at the sisters' Milwaukee motherhouse. Proceeds support the sisters' local and global hunger ministries. Choose from meat or vegetarian options in 1- or 2-quart sizes. Visit [www.sssf.org](http://www.sssf.org) for complete details and to order.

Location: St. Joseph Center, 29th St. at Orchard St., Milwaukee



**WORLDWIDE MARRIAGE ENCOUNTER**

Jesus told the Samaritan woman at Jacob's Well that whoever shall drink from the water He will give will not thirst again. Let Jesus fill your thirst for a blessed marriage by participating in an upcoming Worldwide Marriage Encounter Experience. Visit our website at [wme.org](http://wme.org) or call (888) 574-5653.



**VIRTUE BASEBALL**  
REGISTRATION IS OPEN!

This summer, join a growing group of families in Lake Country and the greater Milwaukee area that share your beliefs and virtues by registering your child for Virtue Baseball!

The Virtue Baseball Club exists to honor Christ by encouraging our children to heroically live out Catholic virtue through the sport of baseball.

Registration is open through March 31 for boys (grades K-12) and girls (grades K-2). No prior playing experience is required! To register please scan the QR code, visit [www.VirtueBaseball.com](http://www.VirtueBaseball.com) or email [connect@VirtueBaseball.com](mailto:connect@VirtueBaseball.com).



*Virtue Baseball Club is an apostolate of the Men of Christ movement.*

**ABORTION GRIEF IS REAL**

**NOW IS THE TIME FOR HEALING**



April 10-12, 2026



**POST-ABORTION HEALING RETREAT**  
*A Weekend of Hope & Restoration*

Register at [www.elizabethministry.com/events](http://www.elizabethministry.com/events) or call 920-766-9380 for more information.



**Ground Crew Service**  
Full Service Landscape Management  
**262.821.9680**  
www.groundcrewservice.com

**Hartland Terrace**  
Assisted Living

- RN Lead 24-Hour Elite Care Team
- Full Continuum of Care • Memory Care
- All Inclusive Pricing • Private Studios
- Family Centered Care Model

327 North Avenue • Hartland | 262-369-4391  
www.hartlandterrace.com

**Wolf Electric LLC**  
Commercial, Industrial, Residential

Garrett Wolf • Master Electrician/Parishioner  
Commercial • Industrial • Residential  
(414) 899-3608 • www.wolfelectricllc.com

**PAUN Construction**  
Specializing in Masonry Residential & Commercial

W300 N7741 Christine Ln., Hartland, WI 53029  
Robert J. Paun (262) 926-6043  
www.paunconstruction.com  
mail@paunconstruction.com

**R&R INSURANCE**  
Rick Kalscheuer Parish Member  
Tom McInerney  
Jon Budzney  
MyKnowledgeBroker.com  
800.566.7007  
**we know.**

**WISCONSIN ORTHODONTICS**

HARTLAND • 262-367-7076  
WEST BEND • 262-306-0600  
WAUWATOSA • 414-463-5700  
www.wisconsinorthodontics.com

Daniel Holzhauser, DDS, MS • Charles Hewett, DDS, MS • Joshua Barta, DDS, MS • Benjamin Schneider, DDS, MS

**IF YOU LIVE ALONE**

**MDMedAlert!**™ As Low As **\$19.95** mo.

- ✓ Ambulance/Police
- ✓ Family/Friends
- ✓ GPS & Fall Alert

**CALL NOW!**  
**800.808.9294** \*md-medalert.com



**TODD WANGERIN ELECTRIC, Inc.**

Free Estimates - Licensed - Insured  
Over 20 years experience

Todd Wangerin 262-719-4411  
twelectric4411@att.net

**Culver's**  
BUTTER BURGERS & FRENCH COUNTRY

701 Industrial Ct., Hartland  
262-367-5800

**ARKENSTONE**  
Real Estate Experts  
Unleash Your Potential. Transform Your Land, Home and Business.

262-510-1096  
Elevate your journey with us!



**Lake Country Clean**  
Stay Green, Stay Clean

- + Eco-Friendly Standard and Deep Cleaning
- + Residential and Commercial
- + Home Organizing

www.LakeCountryClean.com  
Service@LakeCountryClean.com + (262) 232-7720

**BUNZEL'S OLD FASHIONED MEAT MARKET**

Fresh Custom Cut Choice Meats  
Party Trays • Catering  
Thank You For Supporting A Family Tradition  
9015 W. BURLEIGH 873-7960  
www.bunzelmeats.com

**Espire**  
YOUR HOME FOR BUILDING HOME.

**EspireHomes.com**  
262-746-2000  
Parish Members



**Pat's Heating, Air Conditioning, & Electrical**

OVER 35 YEARS OF EXCELLENCE  
262-567-7499 • OCONOMOWOC  
www.patsh Heating.com

**Hartland Family CHIROPRACTIC**

211 Cottonwood Ave, Hartland  
(262) 367-7424  
www.hartlandchiro.com




**FOOT & ANKLE**  
Associates of Wisconsin  
Parish Member  
Dr. Amy Galati

Call: (262) 542-3779  
www.footandanklewi.com

**Dental Care that Shines**

**parkway dental** DELAFIELD  
524 Milwaukee St., St 200  
Delafield, WI 53018  
262-646-7717

**Sm:le FX Dental** GREENFIELD  
6919 W Forest Home Ave.  
Greenfield, WI 53220  
414-545-8226

**NEW BERLIN**  
15855 W National Ave. Ste. 104  
New Berlin, WI 53151  
262-782-4220  
Smile@smilefxdental.com

Dr. Glenn Gequillana Dr. Sahar Karimuddin Dr. Hamza Omar Dr. Edward Park

**JT ARBORISTS**

262-719-1440  
Mulch Madness  
Dyed and Hardwood Mulch  
DELIVERY, PICKUP AND SPREADING OF MULCH IS AVAILABLE  
Hartland

**TOWN BANK**  
AWINTRUST COMMUNITY BANK

800-433-3076  
www.townbank.us

**Palmer's STEAKHOUSE**

www.Palmerssteakhouse.com  
122 E. Capitol Dr. • Hartland, WI  
262-369-3939

**VS VISU-SEWER, INC.**

262-695-2340  
Professional Sewer Inspection, Maintenance and Rehabilitation Services  
Parish Members  
www.visu-sewer.com

**FALBO PIZZERIA**

Carry Out ~ Delivery ~ Catering  
262-367-2700 | FalboPizza.com  
Pizzas • Subs • Salads • Appetizers  
Located on 418 Merton Avenue off Hwy 16 in Hartland

**CHARLES St.**  
Parish and School

St. Charles School... We choose Christ in learning, living, & values in the light of our faith.  
262-367-2040  
www.stcharlesschoolhartland.com

**JENSON MOTORS**  
Auto - Truck Repair

Hours: Mon-Fri 7:30-5:30  
Proprietor: Guy Jenson  
262-367-5556  
364 Cottonwood Ave., Hartland, WI

**MATHNASIUM**  
The Math Learning Center

BROOKFIELD • HARTLAND • OCONOMOWOC  
www.mathnasium.com

Compliments of:  
**Boehme & Taylor, CPAs**

**LAKESIDE INTERNATIONAL TRUCKS** **BADGERLAND IDEALEASE**

Offering Wisconsin businesses transportation solutions nearly 40 years.

- Truck Sales
- Parts
- Service
- Body Shop
- Leasing & Rental

Bill Reitley, Jr. Parish Member



SERVING: Milwaukee • Madison • Racine  
West Bend • Sheboygan • Janesville • Monroe • Rockford


**EVERT-LUKO FUNERAL HOME**  
& CREMATION SERVICES

Guiding with skillful hands and soulful hearts  
**262-367-2156**  
www.evertlukofuneralhome.com

Little space.  
Big impact.

Advertise here  
Call 800-950-9952

We help real estate investors invest in passive assets and defer tax.  
If you are planning on selling your investment property, let's talk.



**Broaching Technologies**  
Machines • Tooling • Subcontracting

Blind and Thru Hole: www.keyway-spline-broaching.com  
Broaching, Splining, Keyseating, P (262) 820-1200  
Slotting, Shaping sales@broachingtech.com

**KLINK'S KARPETS, INC**  
Hartland's Floor Covering Center  
Family Owned & Operated for over 47 Years  
Carpeting & Hard Surfaces  
107 North Ave. Hartland, WI  
367-4670 Parish Member

**INSIGHT INVESTMENT ADVISERS**

**BRANDON BRUCKMAN**  
414-882-8738  
www.investwithinsight.com

**CMC**  
CUSTOM MADE CABINETRY

For All Your Remodeling Needs!  
KITCHEN & BATH REMODELING  
COMPLETE HANDYMAN SERVICES  
JIM FISCHER  
fischerjames29@gmail.com  
414-614-7329

**Generations DENTAL**

Jim Muenzenberger, D.D.S.  
and Kelly Newman, D.D.S.  
Parish Members  
GenerationsDentalHartland.com

139 E. Capitol Dr.  
Hartland, WI 53029  
Office 262-367-2750

**Sprung Heating & Pump Service LLC**

HVAC • PLUMBING • WELL PUMPS • GENERATORS  
PO BOX 3024 • MERTON, WI 53056  
262-538-1400  
www.sprungheating.com

**Lake Country Eye Care**

520 Hartland Dr. • Hartland, WI  
Amber A. Deutz, OD - Parishioner  
www.lakecountryeyecare.com  
262-367-6610

Helping you achieve financial dreams



**James Dunn**  
Managing Director – Financial Advisor  
(262) 395-1101  
www.dunninvestmentmanagement.com



**Lake Five**  
LANDSCAPE SUPPLY LLC  
Mulch • Firewood • Nursery  
**262-777-1523**  
W275N7813 Lake Five Rd Hartland, WI  
LakeFiveSupply.com

Lake Country  
**Bed Barn**  
Good Morning Store  
Mattress & Furniture Store  
600 Hartbrook Dr, Hartland  
Parish Member

**Support Our Advertisers!**

**REICHL & KOLSTAD**  
**ORTHODONTICS**  
Dr. Peter Reichl & Dr. James Kolstad  
look forward to meeting you!  
Offering Traditional Braces & Invisalign  
Located in Waukesha, Mukwonago & Hartland  
GOLD+ **262-547-2827**  
www.ReichlKolstadOrtho.com

**WISE**  
DESIGN BUILDERS  
**262-790-4444**  
Parish Members  
www.wisedesignbuilders.com

**HARTLAND SERVICE**  
AUTOMOTIVE REPAIR CENTER  
400 E. Industrial Dr.  
Hartland, WI 53029  
**262-367-4234**  
hartlandservice.com

**COURI INSURANCE AGENCY**  
*Protection for the Unexpected™*  
Coverages **IMPORTANT**  
Pricing **IMPORTANT**  
Low Costs  
**GREAT COVERAGES**  
Jerry & Judie Couri  
**262-548-8077 • couri.com**

**CCGI**  
Corporate Contractors Inc  
CCIWI.COM

**CARPET PLUS, INC.**  
We Bring the Showroom to You!  
(414) 573-0105  
Proudly Serving Crusader Nation for over 25 years!  
**Dan Taylor, Parish Member**

Angela Isherwood  
Owner & Luxury Travel Designer  
Parishioner  
**262.229.9271**  
Angela@OliveAndAtlasTravel.com  
www.OliveAndAtlasTravel.com

**Savings & care**  
**24/7/365**  
Call, click or stop by today  
**State Farm**  
Joe Woelfle ChFC®  
Agent  
Parishioner  
303 Oakton Ave  
Pewaukee, WI 53072  
Bus: 262-303-4441  
www.insurelakecountry.com  
State Farm - Bloomington, IL

**hope-iatry™**  
Personalized Mental Health Care  
for Children & Adolescents  
support@hope-iatry.com  
(262) 303-4017

**PASTERNAK & ZIRGIBEL S.C.**  
FRANK PASTERNAK, PARISH MEMBER  
BEST LAWYERS IN AMERICA  
BEST LAW FIRMS U.S. NEWS & WORLD REPORT  
TOP 25 MILWAUKEE & TOP 50 WISCONSIN SUPER LAWYERS  
(262) 785-0802 injurywisconsin.com

**OFFICE FURNITURE WAREHOUSE®**  
New & Preowned Office Furniture  
Design, Delivery, Installation, & Liquidation Services  
Elijah Walters (262)719-8621  
ofwgo.com

**-GRADING AND EXCAVATION SPECIALISTS-**  
Rough and Finish Grading • New and Old Construction  
Egress Windows • Brush Clearing • Minor Demolition  
Parishioner  
TROY BOESL  
Owner/Operator  
**414-254-9794**  
Cardinal SERVICES

**NO INTEREST PAYMENTS UNTIL 2028**

**Pella** WINDOWS & DOORS OF WISCONSIN  
Visit the Pella Windows & Doors of Wisconsin showroom nearest you:  
Brookfield | De Pere | Madison | Pellawi.com | (262) 783-6600  
VISIT PELLAWI.COM FOR CURRENT OFFERS

Maddie Goedken  
WEDDING PHOTOGRAPHER  
Parishioner  
maddiegoedkenphoto.com

**Elegant Nails Spa**  
ELEGANT NAILS SPA  
WHERE BEAUTY MEETS DISCOUNTS  
(262) 367-6688  
600 Hartbrook Dr., Ste. 109 • Hartland, WI  
Mon-Fri: 9am-7pm  
Sat: 9am-5pm  
Sunday: Closed

**Jonathan Riesch**  
Investment Advisor Representative GLOBAL VIEW CAPITAL ADVISORS  
Powered by Armathea Investing - "Put your money where your faith is" Retail Investing for Catholics  
• Tactical Asset Management • Retirement Planning  
• Estate Planning (Trusts & Tax Mitigation)  
jriesch@gvcaonline.com | (262) 650-1030 x117 | www.rieschfinance.com  
Global View Capital Advisors is an affiliate of Global View Capital Management. Advisory services offered through Global View Capital Management (GVCM). GVCM is an SEC registered investment advisory firm. Jonathan Riesch is an Investment Adviser Representative ("Advisor") with GVCM.

**PLM**  
PAVING AND CONCRETE  
A PAVE AMERICA COMPANY  
**262.691.3964** www.plmpaving.com

**MS Landscaping LLC**  
(262) 352-6606  
mslandscape72@gmail.com  
MSLandscapingLLC.com  
Hartland, WI  
SERVICES:  
• Dirt Work/Grading • Lawn Installation  
• Fertilizing • Lawn Maintenance  
• Lawn Aeration • Mulch  
• Landscape Construction • Snow Removal  
• Tree Work

**Best Tuxedo Company**  
Best Price, Best Fit Tuxedo & Suit Rentals  
phone or text:  
**608-412-0914**  
besttuxedocompany@gmail.com  
Located in Lake County - Parishioner

**Wisconsin Dance Theatre Conservatory**  
Build-Your-Own Summer Intensive  
July 7th - August 15th  
wisconsintheatre.com

**NELCO ELECTRIC, INC.**  
GERMANTOWN, WI  
Commercial • Industrial • Residential  
24 Hour Service **262-502-9950**  
WWW.NELCOELECTRIC.COM  
Barb Jarchow Parishioner

**KJN Builders**  
Quality construction since 1991  
Jim Lewein 414-881-4774  
2lewein@gmail.com kjnbuilders.com

**FRONTIER**  
TITLE & CLOSING SERVICES  
1130 James Drive, Hartland, WI 53029  
Office: 262-361-4466 Fax: 262-361-4462  
www.frontiertitlellc.com  
Frontier Title & Closing Services, LLC  
Lake Country's Most Experienced Title & Closing Company  
Specializing in Residential, Commercial & New Construction Transactions  
Serving the Real Estate Community!

Custom Asphalt Solutions Since 1941  
**WOLF PAVING**  
Parking Lots  
Private Roads  
Walking Paths  
Athletic Courts  
wolfpaving.com

**zimmerman**  
ARCHITECTURAL STUDIOS, INC.  
2122 West Mt. Vernon Avenue  
Milwaukee, WI 53233 | zstudio.com  
TELEPHONE (414) 476-9500  
FACSIMILE (414) 476-8582