



*At St. Charles, all are invited to  
meet Christ, know Christ,  
love Christ and serve Christ.*

**April 19, 2026**

**THIRD SUNDAY OF EASTER**

# JESUS

HIMSELF DREW  
NEAR AND WALKED  
WITH THEM.

— LUKE 24:15 —



©LPi

**St. Charles Parish & School | 313 Circle Drive, Hartland, WI 53029**

262-367-0800 | [www.stcharleshartland.org](http://www.stcharleshartland.org) | email: [parish@stcharleshartland.org](mailto:parish@stcharleshartland.org)



# WELCOME TO ST. CHARLES - WE ARE HERE FOR YOU



PASTOR  
Fr. Ken Omernick



ASSOCIATE PASTOR  
Fr. Aaron Siehr

## ST. CHARLES STAFF TEAMS

### CONTACT PASTOR THROUGH ASSISTANT:

Terrie Carew, Ext. 224, [tcarew@stcharleshartland.org](mailto:tcarew@stcharleshartland.org)  
ASSOCIATE PASTOR:

Fr. Aaron Siehr, [asiehr@stcharleshartland.org](mailto:asiehr@stcharleshartland.org)  
TEACHING PARISH SEMINARIANS:  
Timothy Heyrman, [theyrman@sfs.edu](mailto:theyrman@sfs.edu)

### SCHOOL TEAM 262-367-2040

Principal/School Team Lead: Dan Garvey, Ext. 208,  
[dgarvey@stcharleshartland.org](mailto:dgarvey@stcharleshartland.org)  
School Administrative: Lisa Moehrke, Ext. 207,  
[school@stcharleshartland.org](mailto:school@stcharleshartland.org)  
School Administrative: Karen Dejewski, Ext. 206,  
[kdejewski@stcharleshartland.org](mailto:kdejewski@stcharleshartland.org)  
School Administrative: Nina Wolf, Ext. 218,  
[nwolf@stcharleshartland.org](mailto:nwolf@stcharleshartland.org)  
School Administrative: Cindy Hince, Ext. 218,  
[chinca@stcharleshartland.org](mailto:chinca@stcharleshartland.org)

### WORSHIP TEAM

Director of Worship: Peg Kasun, Ext. 225,  
[pkasun@stcharleshartland.org](mailto:pkasun@stcharleshartland.org)  
Director of Music: Dr. Aaron Mathews, Ext. 229,  
[amathews@stcharleshartland.org](mailto:amathews@stcharleshartland.org)  
Director of Liturgy: Elizabeth Thompson, M.Div.,  
262-367-6704 [ethompson@stcharleshartland.org](mailto:ethompson@stcharleshartland.org)  
Worship Associate/ Baptism Coordinator: Jacqueline Bernard,  
Ext. 205 [jbernard@stcharleshartland.org](mailto:jbernard@stcharleshartland.org)  
Wedding Coordinator: Dee Anne Hamer, Ext. 219,  
[dhamer@stcharleshartland.org](mailto:dhamer@stcharleshartland.org)

### DISCIPLESHIP TEAM

Director of Student Discipleship: Tiffany Topel, Ext. 209  
[ttopel@stcharleshartland.org](mailto:ttopel@stcharleshartland.org)  
Director of Evangelization: Valerie Winkel, Ext. 220,  
[vwinkel@stcharleshartland.org](mailto:vwinkel@stcharleshartland.org)  
Children's Discipleship Lead: Shelly Buchan, Ext. 221,  
[sbuchan@stcharleshartland.org](mailto:sbuchan@stcharleshartland.org)  
Student Discipleship Coordinator: Caroline Coiner, Ext. 209,  
[ccoiner@stcharleshartland.org](mailto:ccoiner@stcharleshartland.org)  
Catechesis of the Good Shepherd Staff: Sharon Tobolski,  
Ext. 221, [stobolski@stcharleshartland.org](mailto:stobolski@stcharleshartland.org)  
Catechesis of the Good Shepherd Staff: Erika Wood,  
Ext. 221, [ewood@stcharleshartland.org](mailto:ewood@stcharleshartland.org)

### OPERATIONS TEAM

Director of Finance & Human Resources: Celia Meyers,  
Ext. 216, [cmeyers@stcharleshartland.org](mailto:cmeyers@stcharleshartland.org)  
Director of Operations: Mike Cattani, Ext. 201,  
[mcattani@stcharleshartland.org](mailto:mcattani@stcharleshartland.org)  
Maintenance Manager: Tim Orzechowski, Ext. 217,  
[torzechowski@stcharleshartland.org](mailto:torzechowski@stcharleshartland.org)  
Accounting: Dee Anne Hamer, Ext. 219,  
[dhamer@stcharleshartland.org](mailto:dhamer@stcharleshartland.org)  
Phase III Cornerstone: Brenda Zingsheim, Ext. 231,  
[bzingsheim@stcharleshartland.org](mailto:bzingsheim@stcharleshartland.org)  
Safeguarding: Karen Dejewski, Ext. 206,  
[kdejewski@stcharleshartland.org](mailto:kdejewski@stcharleshartland.org)

### COMMUNICATIONS & STEWARDSHIP TEAM

Director of Communications & Stewardship: Allison Caswell,  
Ext. 202, [acaswell@stcharleshartland.org](mailto:acaswell@stcharleshartland.org)  
Assistant to the Pastor: Terrie Carew, Ext. 224,  
[tcarew@stcharleshartland.org](mailto:tcarew@stcharleshartland.org)  
Communications & Stewardship Coordinator: Lucca Kenyon,  
Ext. 210, [lkenyon@stcharleshartland.org](mailto:lkenyon@stcharleshartland.org)  
Volunteer Coordinator: JoAnna Olejnik,  
[jolejnik@stcharleshartland.org](mailto:jolejnik@stcharleshartland.org)  
Administrative: Kathy Gillstrom, Ext. 200,  
[kgillstrom@stcharleshartland.org](mailto:kgillstrom@stcharleshartland.org)  
Administrative/Hospitality Lead: Mary Jo Romportl, Ext. 212,  
[mjromportl@stcharleshartland.org](mailto:mjromportl@stcharleshartland.org)

PARISH OFFICE: 262-367-0800,  
Mon. - Fri., 8 am - 4 pm  
EMAIL US: [parish@stcharleshartland.org](mailto:parish@stcharleshartland.org)

PARISH SCHOOL: 262-367-2040  
[school@stcharleshartland.org](mailto:school@stcharleshartland.org)



WEBSITE: [www.stcharleshartland.org](http://www.stcharleshartland.org)  
LIVESTREAM: Scan QR code  
with phone camera

# WELCOME TO ST. CHARLES - WE ARE HERE FOR YOU

SATURDAY VIGIL MASS: 5:00pm

SUNDAY MASS TIMES: 7:00am, 9:00am, 11:00am & 6:00pm

DAILY MASS: Monday - Saturday: 8:30am

## EUCCHARISTIC ADORATION

We offer Adoration from Mondays at 5:00 a.m. through Saturday mornings at 10:00 a.m.

For current openings, please see our website.



## RECONCILIATION

**Saturdays: 9:30am - 10:30am (two Priests)**

**Thursdays: 5:00pm - 6:00pm (one Priest)**

**Please arrive within 30 minutes of the start time.**

## SACRAMENT OF THE SICK/ ANOINTING MASSES

Sacrament of the Sick Masses are the 2nd and 4th FRIDAYS of every month or by appointment with Fr. Ken or Fr. Aaron (call the Parish Office).

## BAPTISMS

If you are inquiring about having your child baptized, please call 262-367-0800 ext. 205 or email baptisms@stcharleshartland.org.

## OUTREACH SERVICES

Contact the Parish Office at 262-367-0800.

TO ASK FOR PRAYERS or to be added to the email list, please email: prayernetwork@stcharleshartland.org

FOR EMERGENCY PRAYERS, please email: emergencyprayers@stcharleshartland.org

Printed weekly prayer sheets are available on the information wall.

ST. VINCENT DE PAUL: if you need food, shelter or assistance call 262-367-0800 (Parish Office)

## NEED HOME COMMUNION:

For information call 262-367-0800 (Parish Office)

## TO PLACE A MASS INTENTION

Visit the Parish Office to reserve a Mass intention. They are available for all weekend and daily Masses for an offering of \$20.00.

## Mass Intentions for the Week of April 19



### Sunday, April 19

7:00 am † Margaret Collins  
 9:00 am † Living & Deceased Members of St. Charles  
 11:00 am † Bill & Doris Colombe  
 6:00 pm † Barb Greenway

### Monday, April 20

8:30 am † Michael Grzeskowiak

### Tuesday, April 21

8:30 am † Dick Nawrocki

### Wednesday, April 22

8:30 am † James Cochrane

### Thursday, April 23

8:30 am † Ronald Lorenz

### Friday, April 24

8:30 am † David Bieganski

### Saturday, April 25

8:30 am † Katelin Condon  
 5:00 pm † Pat Kelley

### Sunday, April 26

7:00 am † Jean Alexander  
 9:00 am † Living & Deceased Members of the St. Charles Christian Women  
 11:00 am † Living & Deceased Members of St. Charles  
 6:00 pm † Todd Craft



## WEDDING BANNS

2nd Bann ~ Erin Hopkins & Finian Dougherty  
 3rd Bann ~ Emma Chromy & Mason Sturdivant



One of the easiest ways to support St. Charles Parish and School is through the secured online e-giving system.



PARISH SUPPORT  
THRU MARCH 22

FISCAL YEAR  
JULY 1 THRU JUNE 30

### 2025-2026

Envelopes..... \$28,005.00  
 Offertory..... \$4,170.00  
 Weekend Total ..... \$32,175.00  
 E-Giving ..... \$17,626.50  
 YTD ..... \$2,338,041.25

### 2024-2025

Envelopes..... \$23,660.00  
 Offertory..... \$2,841.82  
 Weekend Total ..... \$26,501.82  
 E-Giving ..... \$12,349.50  
 YTD ..... \$2,061,785.47



“HE TOOK BREAD,  
SAID THE BLESSING,  
BROKE IT,  
AND GAVE IT TO THEM.

WITH THAT THEIR EYES  
WERE OPENED AND  
THEY RECOGNIZED HIM,

**LUKE**  
24:30-31

©LPi

**THIS WEEKEND'S GOSPEL MEDITATION**

Luke 24:13-35

When I first read Homer's *Odyssey* as a teenager, one scene captured my imagination: Odysseus finally returning home after 20 years, yet no one recognized him. Disguised as a beggar, he speaks with his wife, his son, and even his enemies. He is fully present, yet hidden. Only at the right moment does he reveal himself, and everyone realizes he has been with them all along. I was struck by the mystery that he could be so close to his loved ones and yet they simply could not identify him.

A similar mystery is at the heart of today's Gospel. Two disciples walk the road to Emmaus with Jesus, but "their eyes were prevented from recognizing him" (Luke 24:16). He listens, teaches, and eats with them, yet they remain blind until he breaks the bread. Suddenly their eyes are opened — and at that very moment, he vanishes. His disappearance is not absence. Rather, it is revelation. The Risen Lord is now present in a new way, in the breaking of the bread and in the life of His Church.

Faith is this shift of vision. Instead of searching for a visible Jesus as if he were absent, we learn to recognize him unveiled in hidden ways — in Scripture proclaimed, in the Eucharist, in the sacraments, in the very life of the Church.

And what is true of him is true of us. Just as he disappears into the mission of his Body, we too are meant to be hidden in him. When we live hidden in Christ, we are seen for who we really are.

— Father John Muir

©LPi

**PRAY WITH SCRIPTURE**

**Lectio Divina**

15 minutes each day spent in God's presence — reading, reflecting, responding and resting with his Word — adds up to 90 hours in one year. That is time well spent and a testimony to how a little at a time turns into something remarkable!

**Sunday, April 26th Readings**

**Acts 2:14a, 36-41/Ps 23:1-3a, 3b-4, 5, 6/1 Pt 2:20b-25/Jn 10:1-10**

To find readings for the weekdays and/or Feast Days, please visit <https://bible.usccb.org/bible/readings>.

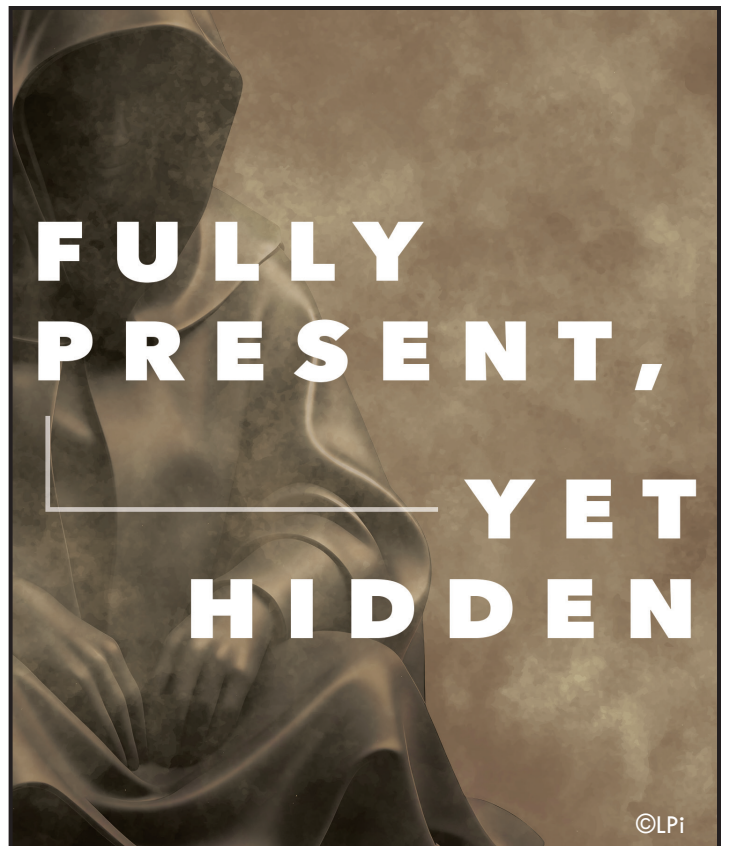
**Reflection questions for Sunday, April 26th**

- The crowds believed Peter's proclamation that in raising the crucified Jesus from the dead, God made Jesus both Lord and Christ. Why do you believe that Jesus is our Lord and Savior?
- Peter speaks of Jesus' wounds healing us. Can you think of a time when you have felt healed by God?
- Jesus speaks of himself as the gate through which his followers pass and have abundant life. How has believing in Jesus enriched your life?



**READ. REFLECT. RESPOND. REST.**

*Cut out and keep in your Bible for reference!*



**FULLY  
PRESENT,  
YET  
HIDDEN**

©LPi

St. Charles Christian Women's

# ANNUAL SPRING BANQUET



  
 Thursday, May 7, 2026  
 11:00am Social Hour  
 I.D. in the Delafield Hotel  
 415 N. Genesee St. Delafield, WI 53018

Please join us for fellowship and this lovely sit-down plate lunch. Your choice of salmon or beef tenderloin, includes frisée spring pea salad, bread, fruit, dessert, coffee, or tea.

Registration forms are available in the Parish Office or on our website. Please register by Friday, May 1. Contact Dianne Merkel at [diannemerkel@gmail.com](mailto:diannemerkel@gmail.com) with any questions.

## ST. VINCENT DE PAUL DONATION BIN



There is a St. Vincent de Paul bin in the northwest corner of the St. Charles parking lot for you to drop off donations.

Donations of shoes, books, and clothing are welcome.

**Please do not donate anything else such as TVs, computers, appliances, or furniture.**

Thank you for your generosity!

# NEW HEIGHTS SMALL GROUP SUMMIT


May 9, 2026 | 9am-5pm Mass



Meet our musician for the New Heights Small Group Summit, Nick Scanlan! Nick is a local musician and speaker. He is a dedicated husband and father of two and parishioner of St Charles. He has led worship at Students of Christ, XLT and Confirmation Retreats across the country as well as several parish missions.

You can find him on Youtube, Instagram, TikTok, Spotify and Apple Music.

Scan the QR code to register by April 26th. Contact Valerie Winkel at [vwinkel@stcharleshartland.org](mailto:vwinkel@stcharleshartland.org) with any questions.

## CATECHESIS OF THE GOOD SHEPHERD CATECHIST TRAINING

Interested in becoming a Catechist for Catechesis of the Good Shepherd (CGS)? Do you love children and are you eager to share the essentials of our faith with them?

There is an upcoming Adult Formation Course to become a catechist for children ages 3-6.

June 15th-20th, 2026 | 9:00am - 4:30pm

St. Jerome Catholic Church, Oconomowoc, WI

Course Description: The Catechesis of the Good Shepherd is a Montessori-based religious formation program for children, beginning at the age of three. It seeks to create and facilitate a sacred, "hands-on" space for children called an atrium, in which both the children and their catechists can hear, ponder, and celebrate the most essential mysteries of the Catholic faith as revealed in the Scriptures and the Liturgy. Originally developed in Rome by Sofia Cavalletti and Gianna Gobbi fifty years ago, the Catechesis continues to spread world-wide. This course will ground the participant in the theory and praxis of CGS while also concretely preparing him/her to develop and facilitate an atrium for 3-6 year old children.

**If you are interested, please contact Children's Discipleship Lead Shelly Buchan at [sbuchan@stcharleshartland.org](mailto:sbuchan@stcharleshartland.org) for more information.**

## ADORATION OPENINGS

Mondays: 6pm, 10pm  
 Tuesdays: 1am, 2am, 11pm  
 Wednesdays: 10pm, 11pm  
 Thursdays: Noon, 8pm, 11pm  
 Fridays: Midnight, 2am, 1pm, 5pm, 7pm, 10pm  
 Saturdays: Midnight, 1am, 2am

Please see our website to sign up.



### GROWING ADORATION HOURS

We hope to extend our Adoration hours to span the entire day each Saturday. If you are interested in signing up for a time slot, please visit our website.

EASTER AT ST. CHARLES



It was such a joy to welcome so many new members into the Catholic faith this Easter season. Please continue to keep our new members and their families in your prayers.

SMALL GROUP UPDATE

Are you a mom to a child who is neurodivergent or disabled? All children, regardless of ability, are part of the body of Christ, and St. Charles welcomes and includes you. A new small group is being formed to support you on this journey.

Please contact Valerie Winkel at [vwinkel@stcharleshartland.org](mailto:vwinkel@stcharleshartland.org) for more information!

**BAPTISMS**  
AT ST. CHARLES



For all Baptism related questions, please email [baptisms@stcharleshartland.org](mailto:baptisms@stcharleshartland.org). Please scan the QR code to learn more!

MEET. KNOW. LOVE. SERVE.



My husband and I have been members of St. Charles for about thirty-two years. Our sons attended St. Charles School. That's when I started volunteering, a great way to meet families. The friendships made then continue now. After our kids graduated, I found other ways to be involved at St. Charles. I joined and love my Small Group. I have learned so much about our Catholic faith from our meetings.

I am also involved in other areas, such as volunteering in the Parish Office a few hours a week. This has given me the opportunity to meet and help fellow parishioners.

Being a member of the Garden Club is a great way to love and serve Christ. Our Garden Club t-shirts say "Flowers are God's way of smiling." We find that our gardens make many people smile, and that's heart-warming.

I have done a little sewing for the church as well. It's a way I can serve by doing something I enjoy.

Also, I enjoy helping out when I can on other committees, along with attending Mass, allowing me to meet, know, love and serve Christ in so many ways.

- Lynette Fenning

2027 MASS INTENTION BOOK

The 2027 Mass Intention Book is open.

Here at St. Charles, a Mass Intention for deceased persons can be reserved through the Parish Office. They are available for all weekend and daily Masses for an offering of \$20.00.

For more information, contact the Parish Office at 262-367-0800, extension 200.

NOTICE OF TRUSTEE NOMINATION

As a matter of Church protocol, Fr. Ken is formally announcing his trustee nominations of Paul Prah (Trustee-Treasurer) and John Stellmacher (Trustee-Secretary).

Paul Prah and his wife Cori raised their family at St. Charles Parish and School. Paul has been a trustee for several years, serving on the Finance Council throughout his terms. Paul has been instrumental in the business operations of St. Charles as well as advancing the mission and goals of our community.

John Stellmacher and his wife Laura moved their young family to St. Charles several years ago. John has been an active member of the St. Charles Finance Council and School Commission. He has been an integral part of the St. Charles budgeting process as well as providing input in the vision and direction of our parish school.

Both Paul and John have graciously accepted Fr. Ken's nomination. Parish members may nominate parishioners for a trustee position. Please call the Parish Office for information and qualifications of nominees. Nomination forms are due May 18, 2026.

# STEWARDSHIP: YOUR TIME, TREASURE & TALENTS



OUTREACH  
SERVICES  
TEAM



## HOPE CENTER MEALS

What a truly beautiful day it was serving at the Hope Center in April. Around 60 people joined us for a wonderful Easter brunch filled with delicious ham, scalloped potatoes, beans, homemade cinnamon and fruit breads, deviled eggs, and an array of fabulous desserts.

A special thank you to Ava E. who so generously prepared and packaged 70 Easter treat bags and Zeilene T. who helped hand them out alongside her grandfather, bringing so much joy to everyone who received one, especially the kids!

This meal was such a meaningful way to share the spirit of Easter. Thank you to all of the volunteers who prepared and donated our meal items. Our volunteers Alycn, Anna, Kathy, Kip, Nancy, John, Geno, Dave and Zeilene created a warm, welcoming atmosphere with their smiles, kindness, and heartfelt conversations.

## MEDICAL MISSION TO LA SAGRADA FAMILIA IN THE DOMINICAN REPUBLIC

November 10-17, 2026

Join Father Aaron as well as St. Charles and Holy Apostles parishioners in the Dominican Republic this November as we conduct our first medical mission in the new Health Clinic, which your donations helped to build.



Please contact **Matthew Gizelbach** at (414) 232-8023 or talk to **Father Aaron** if interested in learning more.



Are you looking for another avenue to deepen your faith? Visit FORMED. Our parish has a FORMED subscription. Visit [signup.formed.org](http://signup.formed.org) and select our parish name.

## ST. VINCENT de PAUL SOCIETY



### FOOD PANTRY NEEDS: Shampoo, Canned Mandarin Oranges, Light Brown Sugar, Bush's Baked Beans, Canned Pineapple

In this Sunday's Gospel, as we hear the story of the disciples on the road to Emmaus, we come to know that reaching out to our neighbor is our daily walk with the risen Christ, that we recognize Him in others. This Sunday invites hope, faith and the recognition of Jesus in everyday life, prayer and community.

The St. Charles SVDP Food Pantry is located on the church grounds at 313 Circle Drive, and it is open Tuesday mornings between 10am and noon. It is also open on the second and fourth Tuesday evenings of the month between 5pm and 6:30pm (new evening times).

*The food pantry will be closed when Arrowhead Schools close for inclement weather. It will reopen the following week, weather permitting.*



## SUPPORT OUR GROCERS & HELP ST. CHARLES PARISH

Please save your receipts from Piggly Wiggly in Hartland/Oconomowoc and Sentry in Delafield. St. Charles receives 1% of the receipt totals from these receipts, and only receipts with grocery purchases are valid.

**Your receipts do pay off! In 2025, St. Charles received \$1,159.17 from Sentry and \$3,105.83 from Piggly Wiggly!**

Please use the drop box located next to the Parish Office to turn them in. **Please include the whole receipt; do not cut the top or bottom off because it makes them invalid.** Do not staple, tape, roll or rubber band them together and keep them flat. Receipts expire within six months, so be sure to turn them in as soon as possible. Thank you for your help!





**EARTH DAY**  
April 22, 2026

As Earth Day approaches, let us all take time to increase our stewardship of God's beautiful creation.

Lord, we thank you for the wonderful world you created. Help us to take care of it well.



**PRAYER SHAWLS AVAILABLE**

Do you or someone you know need a comforting prayer shawl? We have beautiful blessed prayer shawls, donated by our Knitting & Crochet Ministry, available for pick up in the Parish Office.

**STUDENT DISCIPLESHIP EVENTS**



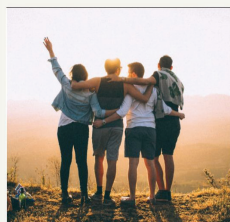
**LAKE COUNTRY  
LIFE TEEN  
MOVIE NIGHT**



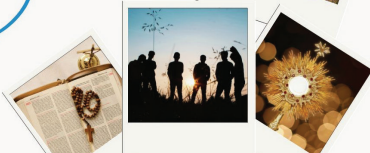
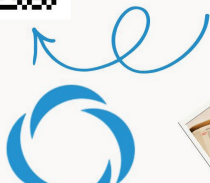
All 11<sup>th</sup> & 12<sup>th</sup> grade high school students are invited to join us for a Faith in Film Movie Night on Saturday, April 25<sup>th</sup> from 6-8:45 pm! Enjoy pizza, snacks, and a showing of a fun movie!



**9TH & 10TH GRADE  
LIFE TEEN  
END OF YEAR RETREAT  
SATURDAY, MAY 2ND  
9:30 AM - 5:30 PM**



SCAN HERE TO SIGN UP!  
FREE TO ATTEND!



Contact Caroline Coiner at [ccoiner@stcharleshartland.org](mailto:ccoiner@stcharleshartland.org) with any questions.

**CAN WE PRAY FOR YOU?**

If you or someone you know is in need of prayers, you are welcome to fill out our Prayer Request Form to place your intention.

St. Charles' Prayer Network will pray for your intention throughout the week, and your prayer will be lifted up during the Universal Prayer at our weekend Masses.

Scan the QR code to access the form or find it on our website at [stcharleshartland.org/worship/prayer-opportunities/](http://stcharleshartland.org/worship/prayer-opportunities/)



**HOLY DUSTERS**

Did you know that cleaning can be prayerful? We kindly invite you to consider becoming a Holy Duster.

As a Holy Duster you will help maintain the cleanliness and beauty of our Church, all which glorifies God and respects our faith.

Thank you for considering joining this beautiful ministry! Contact Mike Cattani at [mcattani@stcharleshartland.org](mailto:mcattani@stcharleshartland.org) or 262-367-0800 ext. 201 with any questions.

**BULLETIN DUE DATES!**

If you have an event(s) you would like to publicize in the upcoming bulletins, please email your information by 8:00 am on the due dates listed below to [lkenyon@stcharleshartland.org](mailto:lkenyon@stcharleshartland.org).

April 26th bulletin is due Monday, April 20th  
May 3rd bulletin is due Monday, April 27th

**BULLETIN ADVERTISERS OF THE WEEK**

Please support our advertisers!



ST. CHARLES DINING OUT!

Duke's Bar & Grill in Hartland  
Wednesday, April 22 - ALL DAY!

Duke's (formerly Endter's) will donate \$5 for every large pizza and \$3 for every small pizza to St. Charles Parish School. Dine in or carry out. Don't forget to buy SCRIP for Duke's! They generously give us a 20% rebate on gift cards.

SPRING MUSICAL

April 24 & 25



We look forward to watching our students perform as they have worked so hard! Please scan the QR code to purchase a ticket or visit <https://stcharleshartland.seatyourself.biz>.



VIP DAY

2026

MAY 1st | FRIDAY | 8:30-11:45am

CELEBRATING VIP'S TODAY & EVERYDAY!

Join us for a special VIP day where students celebrate grandparents and special friends. Mass starts at 8:30am at St. Charles Catholic Church, and students will sit with their honored guests.

Enjoy coffee and donuts following Mass in the Borromeo Hall. Our guests are also welcome to visit classrooms, meet teachers, and spend time with their special students.

Please RSVP by scanning the QR code.



LEARNING ABOUT VOCATIONS



A huge thank you to Shane O'Brien, St. Charles alum and first-year seminary student, and Eric Kohr, a son of our parish and fourth-year seminary student, for coming to St. Charles to speak with our middle-school students about their vocation.

They did a wonderful job of answering questions from our 6th-8th Graders. Fr. Ken, Fr. Aaron, and seminarian Tim Heyman also stopped by for the presentation.



SCHOOL MISSION STATEMENT

*St. Charles Parish School in Hartland, Wisconsin nourishes and grows a vibrant Catholic community committed to innovation, responsiveness and compassion as it prepares and challenges students in their intellectual, spiritual and moral lives.*



**SAFE ENVIRONMENT WEEK**

The Archdiocese of Milwaukee recognizes April 19th–April 25th as Safe Environment Awareness Week. Each year in the month of April, which is recognized around the country as child abuse prevention month, we dedicate a week to elevating the general awareness of the Church’s efforts to keep our children safe. We want people to know that we are committed to maintaining safe environments in our parishes and schools through adult child abuse prevention training; criminal background checks for all clergy, volunteers working with minors, and employees; safety training for children in each grade level; and adhering to all mandatory reporting requirement laws.

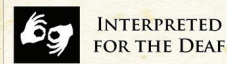


**MONDAY, APRIL 20**

ROSARY FOR HEALING  
AND PROTECTION: 5:15 P.M.

MASS WITH ARCHBISHOP GROB: 6 P.M.

*St. John the Evangelist, Twin Lakes*



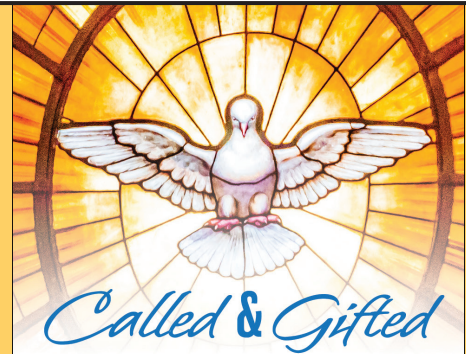
ARCHDIOCESE of MILWAUKEE

**DISCERNMENT DAY**

Single Young Catholic Women 20-40: you are invited for a Discernment Day April 25 with Valley of Our Lady Cistercian Nuns and Franciscan Sisters of Christian Charity in Hollandale, WI. Be guided by St. Ignatius’ Rules of Discernment of Spirits enabling you to make wise and holy life decisions.

Call or text 920-323-9632 with questions.

Register at <https://fsc-calledtobe.org>.



**PART 1**  
**TUESDAY,**  
**MAY 12, 2026**  
**5:30 – 9 P.M.**

**PART 2**  
**TUESDAY,**  
**MAY 19, 2026**  
**5:30 – 9 P.M.**

God has a purpose for your life – and has equipped you for your mission. In your baptism and confirmation, you received gifts that our world needs. Do you know yours? Discover your unique gifts and learn how God is inviting you to use them through the Called & Gifted Workshop. **Further information can be found at: [intranet.archmil.org/called-and-gifted](http://intranet.archmil.org/called-and-gifted)**



Please register **by May 1** to reserve your space.

**ST. JEROME CATHOLIC CHURCH**  
995 S. SILVER LAKE STREET, OCONOMOWOC, WI



Whether you are still in the process of divorcing, or you have been divorced for years, this day of healing is offered to all. Explore divorce in a deeper, gentler way, including presentations that guide you in a relationship with yourself, with God, and with others.

**Saturday, May 2, 2026 • 8:15 a.m. - 4:30 p.m.**

**Schoenstatt Sisters Retreat House**  
W284 N698 Cherry Ln, Waukesha, WI 53188

**Presenter: Marianne Skrobiak, MS, MA, LPC.**  
Marianne is a licensed psychotherapist with many years’ experience in separated and divorced ministry, and author of the “Return to Life” series.

**Cost: \$50 (includes lunch).** Financial assistance is available.  
**Note: Adults only please.** People of all faiths are welcome!

**Pre-registration required:**  
[archmil.regfox.com/dayofhealingregister2026](http://archmil.regfox.com/dayofhealingregister2026)

REGISTER HERE:



REGISTRATION DEADLINE: Friday, April 24, 2026



Questions? Contact: Edell Schaefer ([ballintra@gmail.com](mailto:ballintra@gmail.com))



**Ground Crew Service**  
**Full Service Landscape Management**  
**262.821.9680**  
[www.groundcrewservice.com](http://www.groundcrewservice.com)

**Hartland Terrace**  
 Assisted Living

- RN Lead 24-Hour Elite Care Team
- Full Continuum of Care • Memory Care
- All Inclusive Pricing • Private Studios
- Family Centered Care Model

327 North Avenue • Hartland | 262-369-4391  
[www.hartlandterrace.com](http://www.hartlandterrace.com)

**Wolf Electric LLC**  
 Commercial, Industrial, Residential

**Garrett Wolf** • Master Electrician/Parishioner  
 Commercial • Industrial • Residential  
 (414) 899-3608 • [www.wolfelectricllc.com](http://www.wolfelectricllc.com)

**PAUN Construction**  
 Specializing in Masonry Residential & Commercial

W300 N741 Christine Ln., Hartland, WI 53029  
 Robert J. Paun (262) 326-6043  
[www.paunconstruction.com](http://www.paunconstruction.com)  
 mail@paunconstruction.com

**R&R INSURANCE**  
 Rick Kalscheuer  
 Parish Member  
**Tom McInerney**  
**Jon Budzien**  
 MyKnowledgeBroker.com  
 800.566.7007  
**we know.**

**WISCONSIN ORTHODONTICS**

HARTLAND • 262-367-7076  
 WEST BEND • 262-306-0600  
 WAUWATOSA • 414-463-5700  
[www.wisconsinorthodontics.com](http://www.wisconsinorthodontics.com)

Daniel Holzhauser, DDS, MS • Charles Hewett, DDS, MS • Joshua Barta, DDS, MS • Benjamin Schneider, DDS, MS

**IF YOU LIVE ALONE**

**MDMedAlert!**™ As Low As **\$19.95** mo.

✓ Ambulance/Police **CALL NOW!**  
 ✓ Family/Friends (262) 367-7424  
 ✓ GPS & Fall Alert **800.808.9294** \*md-medalert.com



**TODD WANGERIN ELECTRIC, Inc.**

Free Estimates - Licensed - Insured  
 Over 20 years experience

Todd Wangerin 262-719-4411  
 twelectric4411@att.net

**Culver's**  
 BUTTER BURGERS & FRENCH COUNTRY

**701 Industrial Ct., Hartland**  
**262-367-5800**


**ARKENSTONE**  
 Real Estate Experts  
 Unleash Your Potential. Transform Your Land, Home and Business.  
**262-510-1096**

Elevate your journey with us!



**Hartland Family CHIROPRACTIC**

211 Cottonwood Ave, Hartland  
 (262) 367-7424  
[www.hartlandchiro.com](http://www.hartlandchiro.com)



**BUNZEL'S OLD FASHIONED MEAT MARKET**

Fresh Custom Cut Choice Meats  
 Party Trays • Catering  
 Thank You For Supporting A Family Tradition

9015 W. Burlington 414-873-7960  
[www.bunzels.com](http://www.bunzels.com)

**Espire**  
 YOUR HOME FOR BUILDING HOME.

**EspireHomes.com**  
**262-746-2000**  
 Parish Members



**Pat's Heating, Air Conditioning, & Electrical**

**OVER 35 YEARS OF EXCELLENCE**  
**262-567-7499 • OCONOMOWOC**  
[www.patsh heating.com](http://www.patsh heating.com)

**Hartland Family CHIROPRACTIC**

211 Cottonwood Ave, Hartland  
 (262) 367-7424  
[www.hartlandchiro.com](http://www.hartlandchiro.com)



**FOOT & ANKLE Associates of Wisconsin**  
 Parish Member  
 Dr. Amy Galati  
 Call: (262) 542-3779  
[www.footandanklewi.com](http://www.footandanklewi.com)

**Advertise in Our Church Bulletin!**

**Contact Jeff Tkachuk**  
 jtkachuk@4lpi.com  
 (800) 950-9952 x2513



**JT ARBORISTS**  
**262-719-1440**  
 Mulch Madness  
 Dyed and Hardwood Mulch  
 DELIVERY, PICKUP AND SPREADING OF MULCH IS AVAILABLE  
 Hartland

**TOWN BANK**  
 A WINTRUST COMMUNITY BANK

**800-433-3076**  
[www.townbank.us](http://www.townbank.us)

**Palmer's STEAKHOUSE**

[www.Palmerssteakhouse.com](http://www.Palmerssteakhouse.com)  
 122 E. Capitol Dr. • Hartland, WI  
**262-369-3939**

**CHARLES St.**  
 Parish and School

St. Charles School... We choose Christ in learning, living, & values in the light of our faith.  
**262-367-2040**  
[www.stcharlesschoolhartland.com](http://www.stcharlesschoolhartland.com)

**JENSON MOTORS**  
 Auto - Truck Repair

Hours: Mon-Fri 7:30-5:30  
 Proprietor: Guy Jenson  
**262-367-5556**  
 364 Cottonwood Ave., Hartland, WI

**MATHNASIUM**  
 The Math Learning Center

BROOKFIELD • HARTLAND • OCONOMOWOC  
[www.mathnasium.com](http://www.mathnasium.com)

**VISU-SEWER, INC.**  
**262-695-2340**  
 Professional Sewer Inspection, Maintenance and Rehabilitation Services  
 Parish Members  
[www.visu-sewer.com](http://www.visu-sewer.com)

**FALBO PIZZERIA**

Carry Out ~ Delivery ~ Catering  
**262-367-2700** | FalboPizza.com  
 Pizzas • Subs • Salads • Appetizers  
 Located on 418 Merton Avenue off Hwy 16 in Hartland

**CHARLES St.**  
 Parish and School

St. Charles School... We choose Christ in learning, living, & values in the light of our faith.  
**262-367-2040**  
[www.stcharlesschoolhartland.com](http://www.stcharlesschoolhartland.com)

**JENSON MOTORS**  
 Auto - Truck Repair

Hours: Mon-Fri 7:30-5:30  
 Proprietor: Guy Jenson  
**262-367-5556**  
 364 Cottonwood Ave., Hartland, WI

**MATHNASIUM**  
 The Math Learning Center

BROOKFIELD • HARTLAND • OCONOMOWOC  
[www.mathnasium.com](http://www.mathnasium.com)

Compliments of:  
**Boehme & Taylor, CPAs**

**LAKESIDE INTERNATIONAL TRUCKS** **BADGERLAND IDEALEASE**

Offering Wisconsin businesses transportation solutions nearly 40 years.

- Truck Sales
- Parts
- Service
- Body Shop
- Leasing & Rental

Bill Reilly, Jr. Parish Member



SERVING: Milwaukee • Madison • Racine  
 West Bend • Sheboygan • Janesville • Monroe • Rockford


**EVERT-LUKO FUNERAL HOME**  
 & CREMATION SERVICES

Guiding with skillful hands and soulful hearts  
**262-367-2156**  
[www.evertlukofuneralhome.com](http://www.evertlukofuneralhome.com)

Little space.  
 Big impact.

Advertise here  
 Call 800-950-9952

We help real estate investors invest in passive assets and defer tax.  
 If you are planning on selling your investment property, let's talk.



**Broaching Technologies**  
 Machines • Tooling • Subcontracting

Blind and Thru Hole: [www.keyway-spline-broaching.com](http://www.keyway-spline-broaching.com)  
 Broaching, Splining, Keyseating, P (262) 820-1200  
 Slotting, Shaping [sales@broachingtech.com](mailto:sales@broachingtech.com)

**KLINK'S KARPETS, INC**  
 Hartland's Floor Covering Center  
 Family Owned & Operated for over 47 Years  
 Carpeting & Hard Surfaces  
 107 North Ave. Hartland, WI  
 367-4670 Parish Member

**INSIGHT INVESTMENT ADVISORS**

**BRANDON BRUCKMAN**  
**414-882-8738**  
[www.investwithinsight.com](http://www.investwithinsight.com)

**CMC**  
 CUSTOM MADE CABINETRY

For All Your Remodeling Needs!  
 KITCHEN & BATH REMODELING  
 COMPLETE HANDYMAN SERVICES  
**JIM FISCHER**  
[fischerjames29@gmail.com](mailto:fischerjames29@gmail.com)  
 414-614-7329

**Generations DENTAL**

Jim Muenzenberger, D.D.S.  
 and Kelly Newman, D.D.S.  
 Parish Members  
[GenerationsDentalHartland.com](http://GenerationsDentalHartland.com)

139 E. Capitol Dr.  
 Hartland, WI 53029  
 Office 262-367-2750

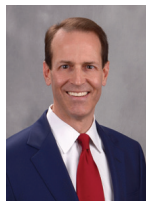
**Sprung Heating & Pump Service LLC**

HVAC • PLUMBING • WELL PUMPS • GENERATORS  
 PO BOX 3024 • MERTON, WI 53056  
**262-538-1400**  
[www.sprungheating.com](http://www.sprungheating.com)

**Lake Country Eye Care**

580 Hartland Dr. • Hartland, WI  
 Amber A. Deutz, OD - Parishioner  
[www.lakecountryeyecare.com](http://www.lakecountryeyecare.com)  
 262-367-6610

Helping you achieve financial dreams



**James Dunn**  
Managing Director – Financial Advisor  
(262) 395-1101  
www.dunninvestmentmanagement.com



**Lake Five**  
LANDSCAPE SUPPLY LLC  
Mulch • Firewood • Nursery  
**262-777-1523**  
W275N7813 Lake Five Rd Hartland, WI  
LakeFiveSupply.com

Faithful Catholics Vote



**WATERTIGHT MASONRY LLC**  
262-528-2024  
Chimney Repair  
USE CODE "TIM KEMPEN-26" FOR \$50 OFF

**REICHL & KOLSTAD**  
ORTHODONTICS



Dr. Peter Reichl & Dr. James Kolstad  
look forward to meeting you!

Offering Traditional Braces & Invisalign  
Located in Waukesha, Mukwonago & Hartland  
**262-547-2827**  
www.ReichlKolstadOrtho.com

**WISE**  
DESIGN BUILDERS  
**262-790-4444**  
Parish Members  
www.wisedesignbuilders.com

Lake Country Remodeling Specialist

**HARTLAND SERVICE**  
AUTOMOTIVE REPAIR CENTER  
400 E. Industrial Dr. Hartland, WI 53029  
**262-367-4234**  
hartlandservice.com

**CARPET PLUS, INC.**  
We Bring the Showroom to You!  
(414) 573-0105  
Proudly Serving Crusader Nation for over 25 years!  
Dan Taylor, Parish Member

**COURI INSURANCE AGENCY**  
Protection for the Unexpected™

Coverages  
**IMPORTANT**  
Pricing  
**IMPORTANT**  
Low Costs  
**GREAT COVERAGES**  
Jerry & Judie Couri  
**262-548-8077 • couri.com**

**CGI**  
Corporate Contractors Inc  
CCIWI.COM

Angela Isherwood  
Owner & Luxury Travel Designer  
Parishioner  
262.229.9271  
Angela@OliveAndAtlasTravel.com  
www.OliveAndAtlasTravel.com

**Savings & care**  
**24/7/365**

Call, click or stop by today

**State Farm**

Joe Woelfle ChFC®  
Agent  
Parishioner  
303 Oakton Ave  
Pewaukee, WI 53072  
Bus: 262-303-4441  
www.insurelakecountry.com  
State Farm - Bloomington, IL

**hope-iatry™**  
Personalized Mental Health Care  
for Children & Adolescents  
support@hope-iatry.com  
(262) 303-4017

**PASTERNAK & ZIRGIBEL S.C.**  
FRANK PASTERNAK, PARISH MEMBER

BEST LAWYERS IN AMERICA  
BEST LAW FIRMS U.S. NEWS & WORLD REPORT  
TOP 25 MILWAUKEE & TOP 50 WISCONSIN SUPER LAWYERS  
(262) 785-0802 injurywisconsin.com

**OFFICE FURNITURE WAREHOUSE®**  
New & Preowned Office Furniture  
Design, Delivery, Installation, & Liquidation Services  
Elijah Walters (262) 719-8621  
ofwgo.com

**-GRADING AND EXCAVATION SPECIALISTS-**  
Rough and Finish Grading • New and Old Construction  
Egress Windows • Brush Clearing • Minor Demolition  
Parishioner  
TROY BOESL  
Owner/Operator  
**414-254-9794**

**NO INTEREST PAYMENTS UNTIL 2028**

Pella Windows & Doors of Wisconsin offers timeless designs built for Wisconsin weather. Choose from wood, fiberglass, or vinyl to match your home's look and enjoy long-lasting beauty with improved energy savings.

**Pella** WINDOWS & DOORS OF WISCONSIN

Visit the Pella Windows & Doors of Wisconsin showroom nearest you:  
Brookfield | De Pere | Madison | Pellawi.com | (262) 783-6600

**VISIT PELLAWI.COM FOR CURRENT OFFERS**

**GLACIER HILLS PLUMBING**

**Elegant Nails Spa**  
ELEGANT NAILS SPA  
WHERE ELEGANCE BLOSSOMS  
**(262) 367-6688**  
600 Hartbrook Dr., Ste. 109 • Hartland, WI

Mon-Fri: 9am-7pm  
Sat: 9am-5pm  
Sunday: Closed

**Jonathan Riesch**  
Investment Advisor Representative GLOBAL VIEW CAPITAL ADVISORS

Powered by Armathea Investing - "Put your money where your faith is" Retail Investing for Catholics

- Tactical Asset Management
- Retirement Planning
- Estate Planning (Trusts & Tax Mitigation)

jriesch@gvcaponline.com | (262) 650-1030 x117 | www.rieschfinance.com

Global View Capital Advisors is an affiliate of Global View Capital Management, Advisory services offered through Global View Capital Management (GVCM). GVCM is an SEC registered investment Advisory firm. Jonathan Riesch is an Investment Adviser Representative ("Advisor") with GVCM.

**PLM**  
PAVING AND CONCRETE  
A PAVE AMERICA COMPANY  
**262.691.3964** www.plmpaving.com

**MS Landscaping LLC**  
(262) 352-6606  
mslandscape72@gmail.com  
MSLandscapingLLC.com  
Hartland, WI

SERVICES:

- Dirt Work/Grading
- Fertilizing
- Lawn Aeration
- Landscape Construction
- Lawn Installation
- Lawn Maintenance
- Mulch
- Snow Removal
- Tree Work

**Best Tuxedo Company**  
Best Price, Best Fit Tuxedo & Suit Rentals  
phone or text:  
**608-412-0914**  
besttuxedocompany@gmail.com  
Located in Lake County - Parishioner

**AMUNDSEN DAVIS**  
ATTORNEYS  
MICHAEL THURSTON PARISH MEMBER  
ILLINOIS | INDIANA | MISSOURI  
OHIO | WISCONSIN  
WWW.AMUNDSENDAVIDLAW.COM

**FRONTIER**  
TITLE & CLOSING SERVICES  
1130 James Drive, Hartland, WI 53029  
Office: 262-361-4466 Fax: 262-361-4462  
www.frontiertitlellc.com

Frontier Title & Closing Services, LLC

Lake Country's Most Experienced  
Title & Closing Company

Specializing in Residential,  
Commercial & New Construction  
Transactions

Serving the Real Estate  
Community!

**Wisconsin Dance Theatre Conservatory**  
Build-Your-Own Summer Intensive  
**July 7th- August 15th**  
wisconsinandtheatre.com

**NELCO ELECTRIC, INC.**  
GERMANTOWN, WI  
Commercial • Industrial • Residential  
24 Hour Service **262-502-9950**  
WWW.NELCOELECTRIC.COM  
Barb Jarchow Parishioner

Custom Asphalt Solutions Since 1941

**WOLF PAVING**

Parking Lots  
Private Roads  
Walking Paths  
Athletic Courts

wolfpaving.com

**zimmerman**  
ARCHITECTURAL STUDIOS, INC.  
2122 West Mt. Vernon Avenue  
Milwaukee, WI 53233 | zastudios.com  
TELEPHONE (414) 476-9500  
FACSIMILE (414) 476-8582

**Never miss our bulletin!**

Get this bulletin delivered straight to your inbox every week.

Scan to subscribe on [parishesonline.com](http://parishesonline.com)