

*At St. Charles, all are invited to  
meet Christ, know Christ,  
love Christ and serve Christ.*

**May 10, 2026**  
**SIXTH SUNDAY OF EASTER**



*"And whoever loves me will be loved by my Father,  
and I will love him and reveal myself to him."*

*Jn 14:20-21*



# WELCOME TO ST. CHARLES - WE ARE HERE FOR YOU



PASTOR  
Fr. Ken Omernick



ASSOCIATE PASTOR  
Fr. Aaron Siehr

## ST. CHARLES STAFF TEAMS

### CONTACT PASTOR THROUGH ASSISTANT:

Terrie Carew, Ext. 224, [tcarew@stcharleshartland.org](mailto:tcarew@stcharleshartland.org)  
ASSOCIATE PASTOR:

Fr. Aaron Siehr, [asiehr@stcharleshartland.org](mailto:asiehr@stcharleshartland.org)  
TEACHING PARISH SEMINARIANS:  
Timothy Heyrman, [theyrman@sfs.edu](mailto:theyrman@sfs.edu)

### SCHOOL TEAM 262-367-2040

Principal/School Team Lead: Dan Garvey, Ext. 208,  
[dgarvey@stcharleshartland.org](mailto:dgarvey@stcharleshartland.org)  
School Administrative: Lisa Moehrke, Ext. 207,  
[school@stcharleshartland.org](mailto:school@stcharleshartland.org)  
School Administrative: Karen Dejewski, Ext. 206,  
[kdejewski@stcharleshartland.org](mailto:kdejewski@stcharleshartland.org)  
School Administrative: Nina Wolf, Ext. 218,  
[nwolf@stcharleshartland.org](mailto:nwolf@stcharleshartland.org)  
School Administrative: Cindy Hince, Ext. 218,  
[chinca@stcharleshartland.org](mailto:chinca@stcharleshartland.org)

### WORSHIP TEAM

Director of Worship: Peg Kasun, Ext. 225,  
[pkasun@stcharleshartland.org](mailto:pkasun@stcharleshartland.org)  
Director of Music: Dr. Aaron Mathews, Ext. 229,  
[amathews@stcharleshartland.org](mailto:amathews@stcharleshartland.org)  
Director of Liturgy: Elizabeth Thompson, M.Div.,  
262-367-6704 [ethompson@stcharleshartland.org](mailto:ethompson@stcharleshartland.org)  
Worship Associate/ Baptism Coordinator: Jacqueline Bernard,  
Ext. 205 [jbernard@stcharleshartland.org](mailto:jbernard@stcharleshartland.org)  
Wedding Coordinator: Dee Anne Hamer, Ext. 219,  
[dhamer@stcharleshartland.org](mailto:dhamer@stcharleshartland.org)

### DISCIPLESHIP TEAM

Director of Student Discipleship: Tiffany Topel, Ext. 209  
[ttopel@stcharleshartland.org](mailto:ttopel@stcharleshartland.org)  
Director of Evangelization: Valerie Winkel, Ext. 220,  
[vwinkel@stcharleshartland.org](mailto:vwinkel@stcharleshartland.org)  
Children's Discipleship Lead: Shelly Buchan, Ext. 221,  
[sbuchan@stcharleshartland.org](mailto:sbuchan@stcharleshartland.org)  
Student Discipleship Coordinator: Caroline Coiner, Ext. 209,  
[ccoiner@stcharleshartland.org](mailto:ccoiner@stcharleshartland.org)  
Catechesis of the Good Shepherd Staff: Sharon Tobolski,  
Ext. 221, [stobolski@stcharleshartland.org](mailto:stobolski@stcharleshartland.org)  
Catechesis of the Good Shepherd Staff: Erika Wood,  
Ext. 221, [ewood@stcharleshartland.org](mailto:ewood@stcharleshartland.org)

### OPERATIONS TEAM

Director of Finance & Human Resources: Celia Meyers,  
Ext. 216, [cmeyers@stcharleshartland.org](mailto:cmeyers@stcharleshartland.org)  
Director of Operations: Mike Cattani, Ext. 201,  
[mcattani@stcharleshartland.org](mailto:mcattani@stcharleshartland.org)  
Maintenance Manager: Tim Orzechowski, Ext. 217,  
[torzechowski@stcharleshartland.org](mailto:torzechowski@stcharleshartland.org)  
Accounting: Dee Anne Hamer, Ext. 219,  
[dhamer@stcharleshartland.org](mailto:dhamer@stcharleshartland.org)  
Phase III Cornerstone: Brenda Zingsheim, Ext. 231,  
[bzingsheim@stcharleshartland.org](mailto:bzingsheim@stcharleshartland.org)  
Safeguarding: Karen Dejewski, Ext. 206,  
[kdejewski@stcharleshartland.org](mailto:kdejewski@stcharleshartland.org)

### COMMUNICATIONS & STEWARDSHIP TEAM

Director of Communications & Stewardship: Allison Caswell,  
Ext. 202, [acaswell@stcharleshartland.org](mailto:acaswell@stcharleshartland.org)  
Assistant to the Pastor: Terrie Carew, Ext. 224,  
[tcarew@stcharleshartland.org](mailto:tcarew@stcharleshartland.org)  
Communications & Stewardship Coordinator: Lucca Kenyon,  
Ext. 210, [lkenyon@stcharleshartland.org](mailto:lkenyon@stcharleshartland.org)  
Volunteer Coordinator: JoAnna Olejnik,  
[jolejnik@stcharleshartland.org](mailto:jolejnik@stcharleshartland.org)  
Administrative: Kathy Gillstrom, Ext. 200,  
[kgillstrom@stcharleshartland.org](mailto:kgillstrom@stcharleshartland.org)  
Administrative/Hospitality Lead: Mary Jo Romportl, Ext. 212,  
[mjromportl@stcharleshartland.org](mailto:mjromportl@stcharleshartland.org)

PARISH OFFICE: 262-367-0800,  
Mon. - Fri., 8 am - 4 pm  
EMAIL US: [parish@stcharleshartland.org](mailto:parish@stcharleshartland.org)

PARISH SCHOOL: 262-367-2040  
[school@stcharleshartland.org](mailto:school@stcharleshartland.org)



WEBSITE: [www.stcharleshartland.org](http://www.stcharleshartland.org)  
LIVESTREAM: Scan QR code  
with phone camera

# WELCOME TO ST. CHARLES - WE ARE HERE FOR YOU

SATURDAY VIGIL MASS: 5:00pm

SUNDAY MASS TIMES: 7:00am, 9:00am, 11:00am & 6:00pm

DAILY MASS: Monday - Saturday: 8:30am

## EUCCHARISTIC ADORATION

We offer Adoration from Mondays at 5:00 a.m. through Saturday mornings at 10:00 a.m.

For current openings, please see our website.



## RECONCILIATION

**Saturdays: 9:30am - 10:30am (two Priests)**

**Thursdays: 5:00pm - 6:00pm (one Priest)**

**Please arrive within 30 minutes of the start time.**

## SACRAMENT OF THE SICK/ ANOINTING MASSES

Sacrament of the Sick Masses are the 2nd and 4th FRIDAYS of every month or by appointment with Fr. Ken or Fr. Aaron (call the Parish Office).

## BAPTISMS

If you are inquiring about having your child baptized, please call 262-367-0800 ext. 205 or email [baptisms@stcharleshartland.org](mailto:baptisms@stcharleshartland.org).

## OUTREACH SERVICES

Contact the Parish Office at 262-367-0800.

TO ASK FOR PRAYERS or to be added to the email list, please email: [prayernetwork@stcharleshartland.org](mailto:prayernetwork@stcharleshartland.org)

FOR EMERGENCY PRAYERS, please email:

[emergencyprayers@stcharleshartland.org](mailto:emergencyprayers@stcharleshartland.org)

Printed weekly prayer sheets are available on the information wall.

ST. VINCENT DE PAUL: if you need food, shelter or assistance call 262-367-0800 (Parish Office)

## NEED HOME COMMUNION:

For information call 262-367-0800 (Parish Office)

## TO PLACE A MASS INTENTION

Visit the Parish Office to reserve a Mass intention. They are available for all weekend and daily Masses for an offering of \$20.00.

## Mass Intentions for the Week of May 10



### Sunday, May 10 - MOTHER'S DAY

7:00 am † Nancy Bertucci

9:00 am † Frances Le Blanc

11:00 am † Ann & Mary Wenstrom

No 6:00 pm Mass

### Monday, May 11

8:30 am † Barbara Cramlet

### Tuesday, May 12

8:30 am † Helen & Bonita Ahner

### Wednesday, May 13

8:30 am † Mary Ellen Courchaine

### Thursday, May 14

8:30 am † Living & Deceased Members of the Brunclik Family

### Friday, May 15

8:30 am † Living & Deceased Members of the Dr. Robert Downing Family

### Saturday, May 16

8:30 am † Jeffrey Schmeckel

5:00 pm † John Paul Rex

### Sunday, May 17

7:00 am † Living & Deceased Members of St. Charles

9:00 am † Ronald Staley

11:00 am † Krystina Finn

6:00 pm † Ed & Annie Miller



## WEDDING BANNERS

3rd Bann ~ Angeline Bunzel & Matthew Fularczyk



One of the easiest ways to support St. Charles Parish and School is through the secured online e-giving system.



PARISH SUPPORT  
THRU APRIL 12

FISCAL YEAR  
JULY 1 THRU JUNE 30

### 2025-2026

Envelopes.....	\$11,577.00
Offertory.....	\$3,364.32
Weekend Total.....	\$14,941.32
E-Giving.....	\$19,832.50
YTD.....	\$2,520,632.47

### 2024-2025

Envelopes.....	\$25,460.00
Offertory.....	\$3,930.41
Weekend Total.....	\$29,390.41
E-Giving.....	\$21,293.00
YTD.....	\$2,210,570.32



**THIS WEEKEND'S GOSPEL MEDITATION**

John 14:15-21

In my family we can hardly speak about orphans without tears. My father was adopted as a baby. He frequently told us stories of how his parents welcomed him not just into their home but into their hearts. It was never merely a relocation or a legal transaction. It was the joy of being chosen, of receiving a family, a name, and a place where he belonged forever. Even in his later years, recalling that gift still moves him to tears of tender gratitude.

That is the kind of tenderness behind Jesus' words in today's Gospel: "I will not leave you orphans; I will come to you" (John 14:18). He is going away but not abandoning us. Instead, he sends us the Advocate, the Holy Spirit — his own Spirit, shared with the Father — who dwells in us. Through the Spirit, Christ is present in us, and we are present in him. His Spirit gives us a home and a family.

We deepen this knowledge in the sacraments, in prayer, and in the daily life of the Church. The Spirit is the bond of belonging, the power that makes us God's sons and daughters, not spiritual orphans. And this is not a one-time event. There is always a deeper outpouring of the Spirit available to us, a fresh appropriation of the promise that we are never abandoned.

If only we could be as grateful as my dad is for his adoption, realizing that we have been adopted by God Himself. In Christ, we are never left as orphans.

— Father John Muir

©LPi

**PRAY WITH SCRIPTURE**  
Lectio Divina

15 minutes each day spent in God's presence — reading, reflecting, responding and resting with his Word — adds up to 90 hours in one year. That is time well spent and a testimony to how a little at a time turns into something remarkable!

**Sunday, May 17th Readings**

**Acts 1:1-11/Ps 47: 2-3, 6-7, 8-9/Eph 1:17-23/Mt 28:16-20**

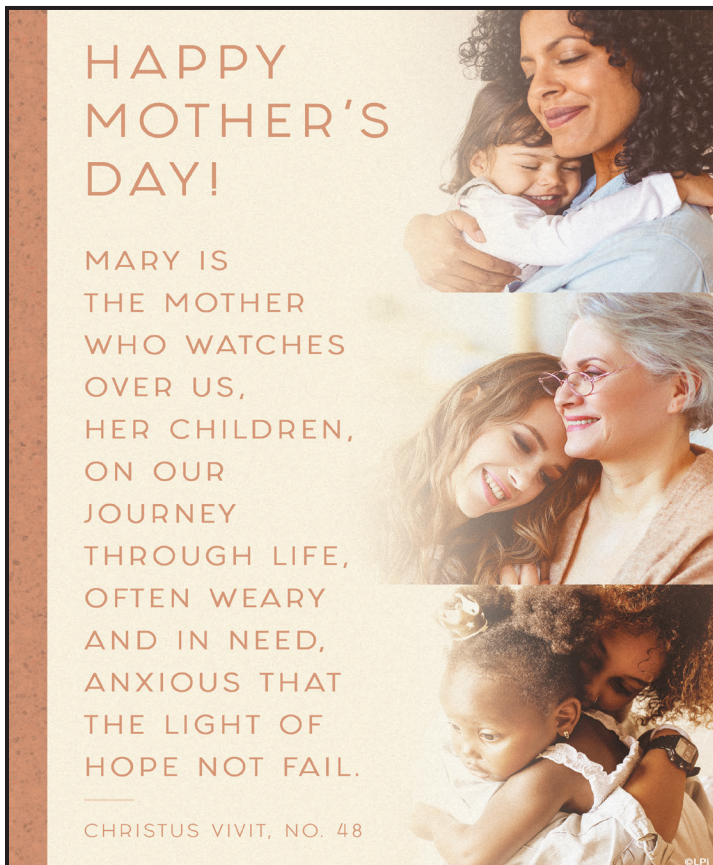
To find readings for the weekdays and/or Feast Days, please visit <https://bible.usccb.org/bible/readings>.

**Reflection questions for Sunday, May 17th**

- We hear how the apostles gathered in prayer with others (including Mary) in Jerusalem shortly after Jesus' ascension into heaven. When do you find yourself being called to prayer?
- Peter teaches that we may suffer insults and ridicule for our belief in Jesus. Have you ever been insulted by others for your faith?
- We hear Jesus praying for us to his heavenly Father. Have you ever prayed for Jesus in prayer?

✂ **READ. REFLECT. RESPOND. REST.**

*Cut out and keep in your Bible for reference!*





### MOTHER'S DAY ROSE SALE

St. Charles' Respect Life/Elizabeth Ministry Team will offer beautiful fresh roses this weekend before and after all the Masses!

We ask for a minimal donation of \$3 per rose which will go towards purchasing religious items and other articles for our "Celebration of Life" gift baskets, "Comfort Bags," "Candle Lighting Prayer Gifts," and other activities assisting Mothers as they navigate Motherhood!

What a great way to show your support for life while honoring mothers, grandmothers, step-mothers, expectant mothers, mothers-in-law, First Communicants, or anyone special in your life!



### SUNDAY FUNDAY

May 17 after the 9:00am Mass

This is an opportunity for parishioners of all ages to gather in fellowship. Meet families for conversation and fun at the playground after the 9:00am Mass. Donut holes and water will be provided. We hope to see you there!



### JOURNEY THROUGH THE HEART OF THAILAND WITH FR. KEN

January 18 - February 2, 2027

Experience the golden temples of Bangkok, the history of the bridge over the River Kwai, and the ancient ruins of Ayutthaya and Sukhothai. Discover the culture and charm of Chiang Mai before relaxing on the beautiful beaches of Phuket. This fourteen-day guided group adventure includes cooking classes, river cruises, scenic train rides, and unforgettable encounters with local communities. **If you are interested in joining us, come to our information night on June 10th at 5:30pm in the Borromeo Hall.**

If you are interested in the trip and would like additional details, reach out to Kristin at 262-337-3776 or [KristinCZWalsh@gmail.com](mailto:KristinCZWalsh@gmail.com).



### SPRINGS IN THE DESERT SMALL GROUP

Infertility can be an isolating experience, impacting relationships and testing faith. If this is your experience, you're not alone!

A new small group is being formed to support you. We will be guided by materials from Springs in the Desert, a Catholic infertility ministry, and our group will be a place to acknowledge the pain and complex emotions associated with infertility and loss through prayer and sharing. **For more information contact Valerie Winkel at [vwinkel@stcharleshartland.org](mailto:vwinkel@stcharleshartland.org).**



### CATECHESIS OF THE GOOD SHEPHERD CATECHIST TRAINING

Interested in becoming a Catechist for Catechesis of the Good Shepherd (CGS)?

Do you love children and are you eager to share the essentials of our faith with them? There is an upcoming Adult Formation Course to become a catechist for children ages 3-6.

June 15th-20th | 9:00am - 4:30pm

St. Jerome Catholic Church, Oconomowoc, WI

**If you are interested, please contact Children's Discipleship Lead Shelly Buchan at [sbuchan@stcharleshartland.org](mailto:sbuchan@stcharleshartland.org) for more information.**

## BAPTISMS AT ST. CHARLES



For all Baptism related questions, please email [baptisms@stcharleshartland.org](mailto:baptisms@stcharleshartland.org). Please scan the QR code to learn more!

### BULLETIN DUE DATES!

If you have an event(s) you would like to publicize in the upcoming bulletins, please email your information by 8:00 am on the due dates listed below to [lkenyon@stcharleshartland.org](mailto:lkenyon@stcharleshartland.org).

May 17th bulletin is due Monday, May 11th  
May 24th bulletin is due Monday, May 18th

### BULLETIN ADVERTISERS OF THE WEEK

Please support our advertisers!



### ADORATION OPENINGS

Mondays: 10pm  
Tuesdays: 1am, 2am, 11pm  
Wednesdays: 10pm, 11pm  
Thursdays: 8pm, 11pm  
Fridays: Midnight, 2am, 1pm, 5pm, 7pm, 10pm  
Saturdays: Midnight, 1am, 3am  
Please see our website to sign up.



# ROMAN HOLIDAY GALA RECAP



## Roman Holiday Gala

### THANK YOU TO OUR SPONSORS!

#### PREMIER



The  
**Reynolds**  
Family

#### DIAMOND

**CLEARWING**  
Productions  
THE BRUNCLIK FAMILY

#### OPEN BAR



THE ROSLAWSKI FAMILY



THE KRUEGER FAMILY

#### DESSERT DASH

The  
**Yingling**  
Family

#### SCHOLAR OF ROME



THE  
GOTTACKER & ENDRES  
FAMILIES



THE SCHNEIDER FAMILY



THE ANGEL FAMILY

#### PIAZZA TABLE



THE KREMIER FAMILY

The  
**Joyce & Mack**  
Families



THE GALATI FAMILY



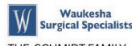
THE BORTZ FAMILY



THE SLEIN FAMILY



THE HALASKA FAMILY



THE SCHMIDT FAMILY

The  
**Randa**  
Family

The  
**Waltersdorf**  
Family

**Rome, Thugs, and  
Harmony**  
THE FRY, FALERIS, PIERRET &  
CRUISE FAMILIES

#### PALAZZO PASS



THE KIRST FAMILY



THE FERNHOLZ FAMILY



THE RINDAHL FAMILY



THE HANAWAY FAMILY

The  
**Andekian**  
Family

The  
**Feller**  
Family

The  
**Speth**  
Family

The  
**Sonn**  
Family

The  
**Cremer**  
Family

The  
**Lobert**  
Family

The  
**Pape**  
Family

The  
**Wipert & O'Brien**  
Families

#### FRIEND OF THE FEAST



THE KOLSTAD & REICHL FAMILIES



THE KROEGER FAMILY



THE KROEGER FAMILY



THE WIPERT & O'BRIEN FAMILIES

The  
**Wipert & O'Brien**  
Families

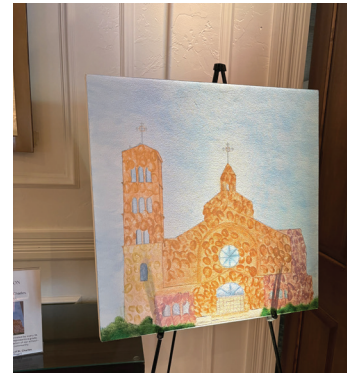
#### ROMAN SUPPORTER

The  
**Matlob**  
Family

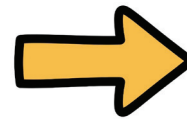
The  
**Mack**  
Family

The  
**Marshall**  
Family

The  
**Rampolla**  
Family



SCAN THE QR CODE  
TO ACCESS PHOTOS  
FROM THE GALA



### THANK YOU VOLUNTEERS!

We extend our deep appreciation to all of our volunteers!  
The generosity of your time and talent speaks volumes.

*Thank you to Patrick McDermott for  
the beautiful photography!*

Congratulations to our 1st and 2nd Graders for winning  
the Pizza Party Raffle!

**Additional Gala recap information will be coming soon. Thank  
you for your support and generosity!**

# STEWARDSHIP: YOUR TIME, TREASURE & TALENTS



OUTREACH  
SERVICES  
TEAM



## ROSEMARY'S MISSION

Are you looking to serve others in our community? Join us by serving Rosemary's Mission.

### WHAT WILL YOU DO?

You can help prepare and deliver meals for two shelter locations in the City of Waukesha, Juno House for families and Sentry House for single men and women. Please help by donating 9x13 meal pans and/or delivering meals for the shelters every Monday and Friday. If you are interested, please call Ann Hansen at 920-763-4773 or email [hansendairy97@gmail.com](mailto:hansendairy97@gmail.com).

## CONTACT OUTREACH SERVICES TEAM

Please scan the QR code or email [humanconcerns@stcharleshartland.org](mailto:humanconcerns@stcharleshartland.org) for more information about Outreach Services initiatives.



## 2027 MASS INTENTION BOOK

The 2027 Mass Intention Book is open. Here at St. Charles, a Mass Intention for deceased persons can be reserved through the Parish Office. They are available for all weekend and daily Masses for an offering of \$20.00.

### There are still Masses available for 2026!

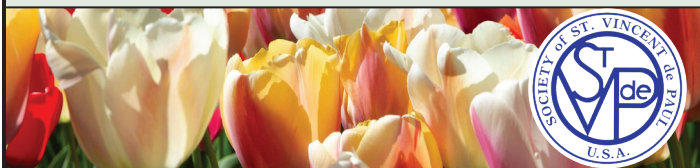
For more information, contact the Parish Office at 262-367-0800, extension 200.

## HOLY DUSTERS

Did you know that cleaning can be prayerful? We kindly invite you to consider becoming a Holy Duster. As a Holy Duster you will help maintain the cleanliness and beauty of our Church, all which glorifies God and respects our faith.

Thank you for considering joining this beautiful ministry! Contact Mike Cattani at [mcattani@stcharleshartland.org](mailto:mcattani@stcharleshartland.org) or 262-367-0800 ext. 201 with any questions.

## ST. VINCENT de PAUL SOCIETY



### FOOD PANTRY NEEDS: Ketchup, Paper Towels, Toilet Paper, Cooking Oil (Regular & Canola)

In the Gospel today on the Sixth Sunday of Easter, Jesus says to us: "If you love me, you will keep my commandments...Whoever loves me will be loved by my Father and I will love him and reveal myself to him."

When we give to those in need, God pours His love, peace, and joy into our hearts, into our lives, and through us into the hearts of the needy.

The St. Charles SVDP Food Pantry is located on the church grounds at 313 Circle Drive, and it is open Tuesday mornings between 10am and noon. It is also open on the second and fourth Tuesday evenings of the month between 5pm and 6:30pm (new evening times).

*The food pantry will be closed when Arrowhead Schools close for inclement weather. It will reopen the following week, weather permitting.*



## SUPPORT OUR GROCERS & HELP ST. CHARLES PARISH

Please save your receipts from Piggly Wiggly in Hartland/Oconomowoc and Sentry in Delafield. St. Charles receives 1% of the receipt totals from these receipts, and only receipts with grocery purchases are valid.

**Your receipts do pay off! In 2025, St. Charles received \$1,159.17 from Sentry and \$3,105.83 from Piggly Wiggly!**

Please use the drop box located next to the Parish Office to turn them in. **Please include the whole receipt; do not cut the top or bottom off because it makes them invalid.** Do not staple, tape, roll or rubber band them together and keep them flat. Receipts expire within six months, so be sure to turn them in as soon as possible. Thank you for your help!

Are you looking for another avenue to deepen your faith? Visit FORMED. Our parish has a FORMED subscription. Visit [signup.formed.org](http://signup.formed.org) and select our parish name.

ST. FRANCIS STATUE BLESSING



Bishop Schuerman blessed our campus as one of the pilgrim sites for the special Jubilee Year of Saint Francis of Assisi proclaimed by Pope Leo XIV in honor of the 800-year anniversary of the saint's death.

In this time of spiritual renewal, the faithful have the opportunity to obtain plenary indulgences – a special grace of God's mercy – under the usual conditions.

We invite you to visit the St. Francis Statue located near the school entrance.

STUDENT DISCIPLESHIP EVENTS



MIDDLE SCHOOL FIELD DAYS

Sundays from 4:30-5:30pm  
May 17, May 31, June 14 & June 28

Come hangout, have a snack, and play games!



FAITH ON FIRE

Sundays from 7-8pm  
May 17, May 31, June 14 & June 28

All high school students are invited to gather around a fire pit for s'mores and fellowship!



BOYS FOOTBALL GAME

May 31 after the 11am Mass

All high school boys are invited to join Seminarian Tim for a touch football game!

To participate in any of the above, please scan the QR code to register.

If you have questions, please contact Caroline Coiner at [ccoiner@stcharleshartland.org](mailto:ccoiner@stcharleshartland.org).

CAN WE PRAY FOR YOU?

If you or someone you know is in need of prayers, you are welcome to fill out our Prayer Request Form to place your intention.

St. Charles' Prayer Network will pray for your intention throughout the week, and your prayer will be lifted up during the Universal Prayer at our weekend Masses.

Scan the QR code to access the form or find it on our website at [stcharleshartland.org/worship/prayer-opportunities/](http://stcharleshartland.org/worship/prayer-opportunities/)



DILIGENCE, EXPLAINED

Diligence is the opposite of negligence; the diligent man pursues his goal with the same faithfulness with which God has pursued us, wayward as we are, through the long course of salvation history.

St. Thomas Aquinas writes that "diligence, no less than solicitude, is required for every virtue" (Sum., II:II, 54, Art. 1).

Christians are called to diligence in prayer, in self-scrutiny, in exercising virtue, in seeking God's will, in detachment from the world and in reflecting on God's word in Scripture: "If we are diligent in observing all of these commandments before the Lord, our God, as he commanded of us, then this will be our righteousness" (Deuteronomy 6:25).

Diligence is made possible by the freedom of will that we have been granted by God, and it is the virtue by which man can secure for himself true happiness (Gaudium et spes, 17).

©LPi



PRAYER SHAWLS AVAILABLE

Do you or someone you know need a comforting prayer shawl? We have beautiful blessed prayer shawls, donated by our Knitting & Crochet Ministry, available for pick up in the Parish Office.

## VIP DAY 2026



We had such a fun day celebrating our students' VIPs. Thank you to all of our guests for joining us for Mass, coffee and donuts, and spending time with our students.

## ATHLETICS REGISTRATION & PARENT VOLUNTEER OPPORTUNITIES

Calling all athletes... it's that time of year again!

If you are interested in playing a sport for the 2026-2027 school year, please scan the QR code to visit our St. Charles Athletics website to sign up.

Our Athletics program is in need of parent volunteers to assist as the Concession Stand Coordinator and a Volunteer Coordinator. If you are interested, please scan the QR code to learn more.



## RECESS FUN WITH SEMINARIAN TIM



Seminarian Tim Heyrman always makes time for recess with our scholars! Thank you, Tim, for being an example and mentor to our children!



### 25th ANNUAL ST. CHARLES PARISH GOLF OUTING Monday, June 1, 2026

Ironwood Golf Course, Sussex  
Format: 18-Hole Scramble  
Divisions: Men, Women, Mixed

Event Schedule	
Registration & Driving Range	9:00 am
Shotgun Start	10:00 am
Cash Bar & Awards	2:30 pm

**Cost:**  
\$125 per golfer includes Driving Range, Box Lunch, 18-holes

Please join us for the 25th Annual St. Charles Golf Outing on Monday, June 1st at Ironwood Golf Course. We are currently looking for Event Sponsors and Raffle Items. If you have any questions regarding the event or if you would like to donate a raffle item please contact Ashley Leonhard at [lillesandlaw@gmail.com](mailto:lillesandlaw@gmail.com).

To register for the event or to be a sponsor, please scan the QR Code.



## SWEET DREAMS DINING OUT

Hungry? Mark your calendars to visit Sweet Dreams in Hartland! Please stop by on **Tuesday, May 12th** and let staff know you are there for St. Charles' Dining Out. We will receive 15% of sales that day.



## SCHOOL MISSION STATEMENT

*St. Charles Parish School in Hartland, Wisconsin nourishes and grows a vibrant Catholic community committed to innovation, responsiveness and compassion as it prepares and challenges students in their intellectual, spiritual and moral lives.*

  
**REDEMPTORIST RETREAT CENTER**  
**Riding into Our Future**  
 1st Annual Fundraiser • Redemptorist Retreat Center Wisconsin

**May 16, 2026 • 5:30 PM**  
**RRC Fundraiser & Dock Hounds Baseball Game**  
 1011 Blue Ribbon Circle N., Oconomowoc, WI  
 Ticket \$60 • Dinner • Drinks • Live & Silent Auction • Raffles  
**Featured Live Auction:**  
**Harley Davidson Iron 883 Custom Motorcycle**  
[www.redemptoristretreat.org](http://www.redemptoristretreat.org)



**GUIDED BY GRACE:**  
**MOTHERS SHARING WISDOM**  
*Hosted by St. Jerome Mothers' Playgroup*

Topic: Surviving and Thriving Motherhood  
 Date: Monday, May 18 from 7 - 8 p.m.  
 Location: St. Jerome Conference Room

Join fellow mothers as we discuss how to thrive in motherhood. Our evening will include a panel discussion with three women from all stages of motherhood. It takes a village to raise children. Let's learn from each other! Bring your questions. Bring your experiences. While we love your children, this event is intended for mothers only. Infants are welcome!

**RSVP requested but not required. Please contact Sarah at [tsozimek@gmail.com](mailto:tsozimek@gmail.com) to register and with any questions you may have.**

**CAMP DE SALES 2026**  
**SUMMER CAMPS**




Fr. Michael Malucha will host the vocation camps for middle school and high school aged young men. All camps will be held at Saint Francis de Sales Seminary.

- High School Overnight Vocation Camp: June 14 at 6pm to June 17 at noon.
- High School Vianney Expedition Day: August 3
- Middle School Day Camps: June 27 from 9am - 3pm, July 18 from 9am - 3pm, and August 8 from 9am - 3pm.


For more information, visit [thinkpriest.org/events](http://thinkpriest.org/events), scan the QR code, or contact the Vocation Office at [vocationoffice@sfs.edu](mailto:vocationoffice@sfs.edu) or 414-747-6437.




**ARCHDIOCESE of MILWAUKEE**  
*Called & Gifted*


PART 1	PART 2
<b>TUESDAY,</b> <b>MAY 12, 2026</b> <b>5:30 - 9 P.M.</b>	<b>TUESDAY,</b> <b>MAY 19, 2026</b> <b>5:30 - 9 P.M.</b>

God has a purpose for your life – and has equipped you for your mission. In your baptism and confirmation, you received gifts that our world needs. Do you know yours? Discover your unique gifts and learn how God is inviting you to use them through the Called & Gifted Workshop. **Further information can be found at:** [intranet.archmil.org/called-and-gifted](http://intranet.archmil.org/called-and-gifted)



Please register by **May 1** to reserve your space.

**ST. JEROME CATHOLIC CHURCH**  
 995 S. SILVER LAKE STREET, OCONOMOWOC, WI


**Blue Mass**  
 for Law Enforcement,  
 First Responders and their families

**TUESDAY,**  
**MAY 26, 2026**  
**6:30 P.M.**



**ARCHDIOCESE of MILWAUKEE**

**Ground Crew**  
30<sup>th</sup> Anniversary Service

**Full Service Landscape Management**

**262.821.9680**  
www.groundcrewservice.com

**Hartland Terrace**  
Assisted Living

- RN Lead 24-Hour Elite Care Team
- Full Continuum of Care • Memory Care
- All Inclusive Pricing • Private Studios
- Family Centered Care Model

327 North Avenue • Hartland | 262-369-4391  
www.hartlandterrace.com

**Wolf Electric LLC**  
Commercial, Industrial, Residential

**Garrett Wolf** • Master Electrician/Parishioner  
Commercial • Industrial • Residential  
(414) 899-3608 • www.wolfelectricllc.com

**PAUN Construction**  
Specializing in Masonry Residential & Commercial

W300 N7741 Christine Ln., Hartland, WI 53029  
Robert J. Paun • (262) 326-6043  
www.paunconstruction.com  
mail@paunconstruction.com

**R&R INSURANCE**  
Rick Kalscheuer Parish Member  
Tom McInerney  
Jon Budzien  
MyKnowledgeBroker.com  
800.566.7007  
**we know.**

**WISCONSIN ORTHODONTICS**

HARTLAND • 262-367-7076  
WEST BEND • 262-306-0600  
WAUWATOSA • 414-463-5700  
www.wisconsinorthodontics.com

Daniel Holzhauser, DDS, MS • Charles Hewett, DDS, MS • Joshua Barta, DDS, MS • Benjamin Schneider, DDS, MS

**IF YOU LIVE ALONE**

**MDMedAlert!**™ As Low As **\$19<sup>95</sup>** mo.

✓ Ambulance/Police **CALL NOW!**  
✓ Family/Friends **800.808.9294**  
✓ GPS & Fall Alert **md-medalert.com**

**TODD WANGERIN ELECTRIC, Inc.**

Free Estimates - Licensed - Insured  
Over 20 years experience

Todd Wangerin 262-719-4411  
twelectric4411@att.net

**Culver's**  
BUTTER BURGERS & FRENCH COUNTRY

**701 Industrial Ct., Hartland**  
**262-367-5800**

**ARKENSTONE**  
Real Estate Experts  
Unleash Your Potential. Transform Your Land, Home and Business.  
**262-510-1096**  
Elevate your journey with us!

**Hartland Family CHIROPRACTIC**  
211 Cottonwood Ave, Hartland  
(262) 367-7424  
www.hartlandchiro.com

Dr. Hans Halaska

**BUNZEL'S OLD FASHIONED MEAT MARKET**

Fresh Custom Cut Choice Meats  
Party Trays • Catering  
Thank You For Supporting A Family Tradition

9015 W. Burlington 414-873-7960  
www.bunzels.com

**Espire** **EspireHomes.com**  
262-746-2000  
Parish Members

YOUR HOME FOR BUILDING HOME.

**Pat's Heating, Air Conditioning, & Electrical**

OVER 35 YEARS OF EXCELLENCE  
262-567-7499 • OCONOMOWOC  
www.patsheating.com

**Hartland Family CHIROPRACTIC**  
211 Cottonwood Ave, Hartland  
(262) 367-7424  
www.hartlandchiro.com

Dr. Hans Halaska

**FOOT & ANKLE Associates of Wisconsin**  
Parish Member  
Dr. Amy Galati  
Call: (262) 542-3779  
www.footandanklewi.com

**Advertise in Our Church Bulletin!**

**Contact Jeff Tkachuk**  
jtkachuk@4lpi.com  
(800) 950-9952 x2513

**Palmer's STEAKHOUSE**

www.Palmerssteakhouse.com  
122 E. Capitol Dr. • Hartland, WI  
**262-369-3939**

**JT ARBORISTS**  
262-719-1440  
Mulch Madness  
Dyed and Hardwood Mulch  
DELIVERY, PICKUP AND SPREADING OF MULCH IS AVAILABLE  
Hartland

**TOWN BANK**  
AWINTRUST COMMUNITY BANK  
800-433-3076  
www.townbank.us

**VISU-SEWER, INC.**  
262-695-2340  
Professional Sewer Inspection, Maintenance and Rehabilitation Services  
Parish Members  
www.visu-sewer.com

**FALBO PIZZERIA**

Carry Out ~ Delivery ~ Catering  
262-367-2700 | FalboPizza.com  
Pizzas • Subs • Salads • Appetizers  
Located on 418 Merton Avenue off Hwy 16 in Hartland

**St. CHARLES**  
Parish and School  
St. Charles School... We choose Christ in learning, living, & values in the light of our faith.  
262-367-2040  
www.stcharlesschoolhartland.com

**JENSON MOTORS**  
Auto - Truck Repair  
Hours: Mon-Fri 7:30-5:30  
Proprietor: Guy Jenson  
262-367-5556  
364 Cottonwood Ave., Hartland, WI

**MATHNASIUM**  
The Math Learning Center  
BROOKFIELD • HARTLAND • OCONOMOWOC  
www.mathnasium.com

Compliments of:  
**Boehme & Taylor, CPAs**

**LAKESIDE INTERNATIONAL TRUCKS** **BADGERLAND IDEALEASE**  
Bill Reilly, Jr. Parish Member

Offering Wisconsin businesses transportation solutions nearly 40 years.

- Truck Sales
- Parts
- Service
- Body Shop
- Leasing & Rental

SERVING: Milwaukee • Madison • Racine  
West Bend • Sheboygan • Janesville • Monroe • Rockford

**EVERT-LUKO FUNERAL HOME**  
& CREMATION SERVICES

Guiding with skillful hands and soulful hearts  
**262-367-2156**  
www.evertlukofuneralhome.com

Little space.  
Big impact.

Advertise here  
Call 800-950-9952

We help real estate investors invest in passive assets and defer tax.  
If you are planning on selling your investment property, let's talk.

**BRANDON BRUCKMAN**  
414-882-8738  
www.investwithinsight.com

**Broaching Technologies**  
Machines • Tooling • Subcontracting

Blind and Thru Hole: www.keyway-spline-broaching.com  
Broaching, Splining, Keyseating, P (262) 820-1200  
Slotting, Shaping sales@broachingtech.com

**KLINK'S KARPETS, INC**  
Hartland's Floor Covering Center  
Family Owned & Operated for over 47 Years  
Carpeting & Hard Surfaces  
107 North Ave. Hartland, WI  
367-4670 Parish Member

**INSIGHT**  
INVESTMENT ADVISORS

**Lake Country Eye Care**  
580 Hartland Dr. • Hartland, WI  
Amber A. Deutz, OD - Parishioner  
www.lakecountryeyecare.com  
262-367-6610

**CMC**  
CUSTOM MADE CABINETRY

For All Your Remodeling Needs!  
KITCHEN & BATH REMODELING  
COMPLETE HANDYMAN SERVICES  
**JIM FISCHER**  
fisherjames29@gmail.com  
414-614-7329

**Generations DENTAL**

Jim Muenzenberger, D.D.S.  
and Kelly Newman, D.D.S.  
Parish Members  
GenerationsDentalHartland.com

**Sprung Heating & Pump Service LLC**

HVAC • PLUMBING • WELL PUMPS • GENERATORS  
PO BOX 3024 • MERTON, WI 53056  
**262-538-1400**  
www.sprungheating.com

Helping you achieve financial dreams



**James Dunn**  
Managing Director – Financial Advisor  
(262) 395-1101  
www.dunninvestmentmanagement.com



**Lake Five**  
LANDSCAPE SUPPLY LLC  
Mulch • Firewood • Nursery  
**262-777-1523**  
W275N7813 Lake Five Rd Hartland, WI  
LakeFiveSupply.com

Faithful Catholics Vote



**WATERTIGHT MASONRY LLC**  
262-528-2024  
Chimney Repair  
USE CODE "TIM KEMPEN-26" FOR \$50 OFF

**REICHL & KOLSTAD**  
ORTHODONTICS



Dr. Peter Reichl & Dr. James Kolstad  
look forward to meeting you!

Offering Traditional Braces & Invisalign  
Located in Waukesha, Mukwonago & Hartland  
**262-547-2827**  
www.ReichlKolstadOrtho.com

**WISE**  
DESIGN BUILDERS  
**262-790-4444**  
Parish Members  
www.wisedesignbuilders.com

Lake Country Remodeling Specialist

**HARTLAND SERVICE**  
AUTOMOTIVE REPAIR CENTER  
400 E. Industrial Dr. Hartland, WI 53029  
**262-367-4234**  
hartlandservice.com

**CARPET PLUS, INC.**  
We Bring the Showroom to You!  
(414) 573-0105  
Proudly Serving Crusader Nation for over 25 years!  
Dan Taylor, Parish Member



**COURI**  
INSURANCE  
AGENCY

Protection for the Unexpected™

Coverages  
**IMPORTANT**  
Pricing  
**IMPORTANT**  
Low Costs  
**GREAT COVERAGES**  
Jerry & Judie Couri  
**262-548-8077 • couri.com**

**CGI**  
Corporate Contractors Inc  
CCIWI.COM

Angela Isherwood  
Owner & Luxury Travel Designer  
Parishioner  
262.229.9271  
Angela@OliveAndAtlasTravel.com  
www.OliveAndAtlasTravel.com

**Savings & care**  
**24/7/365**  
Call, click or stop by today  
**State Farm**  
Joe Woelfle ChFC®  
Agent  
Parishioner  
303 Oakton Ave  
Pewaukee, WI 53072  
Bus: 262-303-4441  
www.insurelakecountry.com  
State Farm - Bloomington, IL

**hope-iatry™**  
Personalized Mental Health Care  
for Children & Adolescents  
support@hope-iatry.com  
(262) 303-4017

**PASTERNAK & ZIRGIBEL S.C.**  
FRANK PASTERNAK, PARISH MEMBER  
BEST LAWYERS IN AMERICA  
BEST LAW FIRMS U.S. NEWS & WORLD REPORT  
TOP 25 MILWAUKEE & TOP 50 WISCONSIN SUPER LAWYERS  
(262) 785-0802 injurywisconsin.com

**OFFICE FURNITURE WAREHOUSE®**  
New & Preowned Office Furniture  
Design, Delivery, Installation, & Liquidation Services  
Elijah Walters (262)719-8621  
ofwgo.com

**-GRADING AND EXCAVATION SPECIALISTS-**  
Rough and Finish Grading • New and Old Construction  
Egress Windows • Brush Clearing • Minor Demolition  
Parishioner  
TROY BOESL  
Owner/Operator  
**414-254-9794**

**NO INTEREST PAYMENTS UNTIL 2028**

Pella Windows & Doors of Wisconsin offers timeless designs built for Wisconsin weather. Choose from wood, fiberglass, or vinyl to match your home's look and enjoy long-lasting beauty with improved energy savings.

Visit the Pella Windows & Doors of Wisconsin showroom nearest you:  
Brookfield | De Pere | Madison | Pellawi.com | (262) 783-6600

**VISIT PELLAWI.COM FOR CURRENT OFFERS**

**GLACIER HILLS PLUMBING**

**Elegant Nails Spa**  
ELEGANT NAILS SPA  
WHERE ELEGANCE BLOSSOMS  
(262) 367-6688  
600 Hartbrook Dr., Ste. 109 • Hartland, WI

Mon-Fri: 9am-7pm  
Sat: 9am-5pm  
Sunday: Closed

**Jonathan Riesch**  
Investment Advisor Representative GLOBAL VIEW CAPITAL ADVISORS  
Powered by Armathea Investing - "Put your money where your faith is" Retail Investing for Catholics  
• Tactical Asset Management • Retirement Planning  
• Estate Planning (Trusts & Tax Mitigation)

jriesch@gvcaponline.com | (262) 650-1030 x117 | www.rieschfinance.com  
Global View Capital Advisors is an affiliate of Global View Capital Management, Advisory services offered through Global View Capital Management (GVCM). GVCM is an SEC registered investment Advisory firm. Jonathan Riesch is an Investment Adviser Representative ("Advisor") with GVCM.

**PLM**  
PAVING AND CONCRETE  
A PAVE AMERICA COMPANY  
**262.691.3964 www.plmpaving.com**

**MS Landscaping LLC**  
(262) 352-6606  
mslandscape72@gmail.com  
MSLandscapingLLC.com  
Hartland, WI

SERVICES:  
• Lawn Installation  
• Lawn Maintenance  
• Fertilizing  
• Mulch  
• Lawn Aeration  
• Snow Removal  
• Landscape Construction • Tree Work

**Best Tuxedo Company**  
Best Price, Best Fit Tuxedo & Suit Rentals  
phone or text:  
**608-412-0914**  
besttuxedocompany@gmail.com  
Located in Lake County - Parishioner

**AMUNDSEN DAVIS**  
ATTORNEYS  
MICHAEL THURSTON PARISH MEMBER  
ILLINOIS | INDIANA | MISSOURI  
OHIO | WISCONSIN  
WWW.AMUNDSENDAVIDLAW.COM

**FRONTIER**  
TITLE & CLOSING SERVICES  
1130 James Drive, Hartland, WI 53029  
Office: 262-361-4466 Fax: 262-361-4462  
www.frontiertitlellc.com

Frontier Title & Closing Services, LLC  
Lake Country's Most Experienced Title & Closing Company  
Specializing in Residential, Commercial & New Construction Transactions  
Serving the Real Estate Community!

**Wisconsin Dance Theatre Conservatory**  
Build-Your-Own Summer Intensive  
**July 7th- August 15th**  
wisconsinandtheatre.com

**NELCO ELECTRIC, INC.**  
GERMANTOWN, WI  
Commercial • Industrial • Residential  
24 Hour Service **262-502-9950**  
WWW.NELCOELECTRIC.COM  
Barb Jarchow Parishioner

Custom Asphalt Solutions Since 1941  
**WOLF PAVING**  
Parking Lots  
Private Roads  
Walking Paths  
Athletic Courts  
wolfpaving.com

**zimmerman**  
ARCHITECTURAL STUDIOS, INC.  
2122 West Mt. Vernon Avenue  
Milwaukee, WI 53233 | zastudios.com  
TELEPHONE (414) 476-9500  
FACSIMILE (414) 476-8582

**Never miss our bulletin!**  
Get this bulletin delivered straight to your inbox every week.

Scan to subscribe on [parishesonline.com](http://parishesonline.com)