



*At St. Charles, all are invited to
meet Christ, know Christ,
love Christ and serve Christ.*

June 22, 2025

THE MOST HOLY BODY AND BLOOD OF CHRIST



I received from the Lord what I also handed on to you, that the Lord Jesus, on the night he was handed over, took bread, and, after he had given thanks, broke it and said, "This is my body that is for you. Do this in remembrance of me."

In the same way also the cup, after supper, saying, "This cup is the new covenant in my blood. Do this, as often as you drink it, in remembrance of me."

For as often as you eat this bread and drink the cup, you proclaim the death of the Lord until he comes.

*1 Corinthians
11:23-26*

St. Charles Parish & School | 313 Circle Drive, Hartland, WI 53029

262-367-0800 | www.stcharleshartland.com | email: parish@stcharleshartland.org



WELCOME TO ST. CHARLES - WE ARE HERE FOR YOU



PASTOR
Fr. Ken Omernick



ASSOCIATE PASTOR
Fr. Aaron Siehr

ST. CHARLES STAFF TEAMS

ASSOCIATE PASTOR:

Fr. Aaron Siehr, asiehr@stcharleshartland.org

TEACHING PARISH SEMINARIAN:

Timothy Heyrman, theyrman@sfs.edu

SCHOOL TEAM 262-367-2040

Principal/School Team Lead: Dan Garvey, Ext. 208,
dgarvey@stcharleshartland.org

School Administrative: Lisa Moehrke, Ext. 206,
school@stcharleshartland.org

School Administrative: Karen Dejewski, Ext. 206,
kdejewski@stcharleshartland.org

School Administrative: Nina Wolf, Ext. 206,
nwolf@stcharleshartland.org

School Administrative: Cindy Hince, Ext. 206,
chince@stcharleshartland.org

WORSHIP TEAM

Worship Lead: Peg Kasun, Ext. 225,
pkasun@stcharleshartland.org

Music Director: Dr. Aaron Mathews, Ext. 229,
amathews@stcharleshartland.org

Liturgist: Elizabeth Thompson, M.Div., 262-367-6704
ethompson@stcharleshartland.org

Liturgy Team Member/Baptism Coordinator: Jacqueline
Bernard, Ext. 205 jbernard@stcharleshartland.org

Wedding Coordinator: Dee Anne Hamer, Ext. 219,
dhamer@stcharleshartland.org

DISCIPLESHIP TEAM

Adult Discipleship Lead: TBD

Small Group Coordinator: Larry Bannister, Ext. 220,
lbannister@stcharleshartland.org

Children's Discipleship Lead: Shelly Buchan, Ext. 221,
sbuchan@stcharleshartland.org

Student Discipleship Lead: Bri Thomson, Ext. 209,
bthomson@stcharleshartland.org

Catechesis of the Good Shepherd Staff: Sharon Tobolski,
Ext. 221, stobolski@stcharleshartland.org

Catechesis of the Good Shepherd Staff: Erika Wood,
Ext. 221, ewood@stcharleshartland.org

OPERATIONS TEAM

Director of Finance: Celia Meyers, Ext. 216,
cmeyers@stcharleshartland.org

Director of Operations: Mike Cattani, Ext. 201,
mcattani@stcharleshartland.org

Maintenance Manager: Tim Orzechowski, Ext. 217,
torzechowski@stcharleshartland.org

Accounting: Dee Anne Hamer, Ext. 219,
dhamer@stcharleshartland.org

Phase III Cornerstone: Brenda Zingsheim, Ext. 231,
bzingsheim@stcharleshartland.org

Safeguarding: Karen Dejewski, Ext. 206,
kdejewski@stcharleshartland.org

COMMUNICATIONS & STEWARDSHIP TEAM

Communications & Stewardship Team Lead: Allison Caswell,
Ext. 202, acaswell@stcharleshartland.org

Assistant to the Pastor: Terrie Carew, Ext. 224,
tcarew@stcharleshartland.org

Communications & Stewardship Coordinator: Lucca Kenyon,
Ext. 224, lkenyon@stcharleshartland.org

Administrative: Kathy Gillstrom, Ext. 200,
kgillstrom@stcharleshartland.org

Administrative/Hospitality Lead: Mary Jo Romportl, Ext. 200,
mjromportl@stcharleshartland.org

PARISH OFFICE: 262-367-0800,
Mon. - Fri., 8 am - 4 pm

EMAIL US: parish@stcharleshartland.org

PARISH SCHOOL: 262-367-2040
school@stcharleshartland.org



WEBSITE & LIVESTREAM:
www.stcharleshartland.com
or scan QR code
with phone camera

WELCOME TO ST. CHARLES - WE ARE HERE FOR YOU

SATURDAY VIGIL MASS: 5:00pm

SUNDAY MASS TIMES: 7:00am, 9:00am, 11:00am & 6:00pm

WEEKDAY MASS: Monday - Friday: 8:30am & Saturday: 8:30am

EUCCHARISTIC ADORATION

We offer Adoration from Mondays at 5:00 a.m. through Friday evenings at midnight.

For current openings, scan QR code.



RECONCILIATION

Saturdays: 9:30am - 10:30am (two Priests)

Thursdays: 5:00pm - 6:00pm (one Priest)

Please arrive within 30 minutes of the start time.

SACRAMENT OF THE SICK/ ANOINTING MASSES

Sacrament of the Sick Masses are the 2nd and 4th FRIDAYS of every month or by appointment with Fr. Ken or Fr. Aaron (call the Parish Office).

OUTREACH SERVICES TEAM: Terri Blazek: 262-367-7608, jtblazek@wi.rr.com

TO ASK FOR PRAYERS or to be added to the email list, please email: prayernetwork@stcharleshartland.org

FOR EMERGENCY PRAYERS, please email:

emergencyprayers@stcharleshartland.org

Printed weekly prayer sheets are available on the information wall.

ST. VINCENT DE PAUL: if you need food, shelter or assistance call 262-367-0800 (Parish Office)

NEED HOME COMMUNION:

For information call 262-367-0800 (Parish Office)

Mass Intentions for the Week of June 22



Sunday, June 22

7:00 am † Jean Alexander

9:00 am † Caroline Kamrath

11:00 am † Glen Marquardt

6:00 pm † Living & Deceased Members of St. Charles

Monday, June 23

8:30 am † Kathie Henkel

Tuesday, June 24

8:30 am † Kathie & Jack Henkel

Wednesday, June 25

8:30 am † Kate Majewski

Thursday, June 26

8:30 am † Kelly Van Ermen

Friday, June 27

8:30 am † Rita Schroeder

Saturday, June 28

8:30 am † Amy Lamerand Zott

5:00 pm † Living & Deceased Members of St. Charles

Sunday, June 29

7:00 am † Ronald Staley

9:00 am † Tom Prier

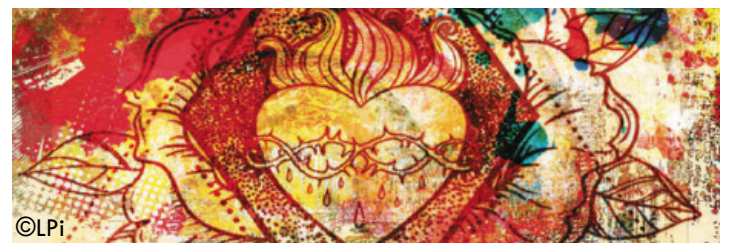
11:00 am † Paul Piotrowski

6:00 pm † Gary Blunt



WEDDING BANNS

3rd Bann ~ Hannah Roth & Zachary Senske



©LPi

One of the easiest ways to support St. Charles Parish and School is through the secured online e-giving system.



PARISH SUPPORT
THRU MAY 25

FISCAL YEAR
JULY 1 THRU JUNE 30

2024 - 2025

Envelopes.....	\$19,752.20
Offertory.....	\$3,219.73
Weekend Total	\$22,971.93
E-Giving	\$6,930.00
YTD	\$2,469,903.79

2023 - 2024

Envelopes.....	\$20,695.50
Offertory.....	\$3,080.77
Weekend Total	\$23,776.27
E-Giving	\$10,680.50
YTD	\$2,390,895.82



THIS WEEKEND'S GOSPEL MEDITATION

Luke 9:11-17

A Catholic friend of mine occasionally says, "The Eucharist is not a noun. It's a verb." In so saying, he is making the point that the Eucharist isn't simply Jesus' bodily presence given to us in holy Communion. It also manifests the dynamic pattern by which Christ actively loves and saves us. He teaches us to cooperate with that pattern. This Eucharist actually embodies four verbs: Jesus takes, blesses, breaks, and gives. Let's consider each one.

He **takes**: Do we acknowledge that we are totally in God's hands? Do we receive everything in our lives as a gift and act responsibly with it?

He **blesses**: Do we actively reflect that Jesus makes us holy in our baptism? Do we embrace our bodies and souls as temples of God, worthy of love, peace, and joy?

He **breaks**: Do we run from failure and disappointment, from getting old or being ignored? Are we too worried about getting hurt or sick? Do we embrace our sufferings with confidence?

He **gives**: Are we willing to make our lives a gift for others? Are we confident that we will always have enough love to give to others, that God will always provide enough for us? Do we rejoice in giving away what we have to others, expecting nothing in return?

This is the dynamic life the Eucharist empowers us to live.

— Father John Muir

©LPi

PRAY WITH SCRIPTURE

Lectio Divina

15 minutes each day spent in God's presence — reading, reflecting, responding and resting with his Word — adds up to 90 hours in one year. That is time well spent and a testimony to how a little at a time turns into something remarkable!

Sunday, June 29th Readings

Vigil: Acts 3:1-10/Ps 19:2-3, 4-5/Gal 1:11-20/Jn 21:15-19

Day: Acts 12:1-11/Ps 34:2-3, 4-5, 6-7, 8-9/2 Tm 4:6-8, 17-18/Mt 16:13-19

To find readings for the weekdays and/or Feast Days, please visit <https://bible.usccb.org/bible/readings>.

Reflection questions for Sunday, June 29th

- In his miraculous escape from prison, Peter was convinced of God's saving work in his life. Where do you see God at work in your life?
- As Paul was nearing the end of his life, he realized that God had rescued him from many dangers and threats. As you reflect on your life, can you see times when God's saving hand was present for you?
- Jesus commissioned Peter to be the foundation ("rock") of his Church. Are there any roles or responsibilities you feel called to do in your parish?



READ. REFLECT. RESPOND. REST.

Cut out and keep in your Bible for reference!



ADORATION & HOLY HOUR OPPORTUNITIES



Adoration Chapel Updates: Our Adoration Chapel is temporarily closed until June 29 due to painting a mural in the space. During this time you are welcome to pray in the church from 7am - 4pm. Please view the calendar on our website to ensure the church is available.



Solemnity of the Most Holy Body and Blood of Christ Eucharistic Adoration: Join us for prayer on Sunday, June 22 from 12 - 3pm in the church. Exposition of the Blessed Sacrament will take place at the end of the 11am Mass, and the Benediction and Reposition will occur at 2:45pm.



Holy Hour for Hope: Join us on **Friday, June 27** at 9:15am for a Holy Hour for Hope on the Solemnity of the Sacred Heart of Jesus. It includes prayers, hymns, prayerful silence in Adoration, a Litany of the Sacred Heart, and Benediction.



Adoration Openings:

Thursdays: 8pm, 9pm

Fridays: Midnight, 2am, 6pm, 7pm

Saturdays (will open July 12): Midnight, 1am, 2am, 3am, 4am

NEWS & REMINDERS



News from the Finance Office: Thank you for your continued generosity and support of St. Charles. When writing checks, please use dark blue or black ink so that our bank can read the checks properly. We are blessed by your generosity!



Parish Office Summer Hours: Please note that our Parish Office will be open from 8:00 am - 4:00pm throughout the summer. Thank you for your flexibility!



Daily Mass Update: Daily Mass on Thursdays has returned to the regular 8:30am time slot. Our school Masses will also be held at 8:30am next Fall.

NEWS & REMINDERS CONTINUED



Castles on the Rhine With Fr. Ken: Join Fr. Ken Omernick on an unforgettable journey aboard the Uniworld Cruise – Castles on the Rhine! This incredible 11-day cruise begins in Amsterdam on September 14, 2026 and ends in beautiful Lake Lucerne on September 24, 2026. An informational meeting will be held on June 30 at 6pm in the Borromeo Room. Come learn all the details about this amazing trip, including the itinerary, pricing, and how to reserve your spot. **For more information, contact Kristin Walsh at 262-337-3776 or kristinczwalsch@gmail.com.**



Lake Country Life Teen: Registration is now open for Edge, Life Teen, Confirmation Classes, and Life Teen Beyond. Please scan the QR code for more information.

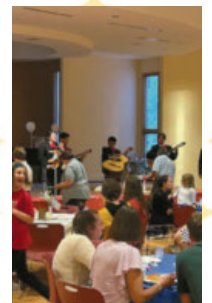


Prayer Shawls Available: Do you or someone you know need a comforting prayer shawl? We have beautiful blessed prayer shawls, donated by our Knitting & Crochet Ministry, available for pick up in the Parish Office.



Garden Club Needs: Our Garden Club is currently looking for someone to lead their initiatives, and they also invite you to consider becoming a Garden Club member. We hope that you prayerfully consider this wonderful opportunity! Please contact the Parish Office to express your interest.

FR. ARIEL'S CELEBRATION WEEKEND



Thank you to all of our volunteers, generous parishioners, students who decorated the rectory driveway, and especially our Hospitality Team for planning and executing such a beautiful weekend to celebrate Fr. Ariel! We feel blessed to have such a wonderful community!



BREAD OF LIFE COMMUNITY MEAL

St. Charles is the home for the Lake Country Bread of Life Community Meal. What began as a meal for the needy in our area has turned into a host program that includes seniors and others in need of a good meal and friendship.

If you or someone you know could use some fellowship and a good healthy meal, please invite them to join us **Thursday, June 26th at 5:30 pm** in the Borromeo Hall. This month's meal will be sloppy joe's and will be served by the Outreach Team. No registration is required!

The St. Charles Outreach Services Team oversees the event. If you would like to volunteer or have questions, please contact the Parish Office or humanconcerns@stcharleshartland.org.



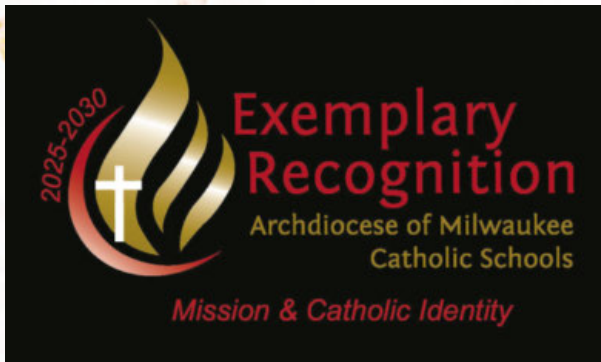
ST. VINCENT de PAUL SOCIETY



FOOD PANTRY NEEDS: Dishwashing Soap, 4 lb. Bags of Sugar, Pineapple, Fruit Cocktail, Jelly (not Grape), Progresso or Campbell's Chunky Soups

Today we celebrate the gift of the Most Holy Body and Blood of Christ. In the Gospel, it recounts the miracle of the loaves and fishes. The food multiplies as it is handed from person to person reminding us that God's love is to be shared with others and is abundant. Today, as you donate to the St. Charles Society of St. Vincent de Paul, know that the multiplication of the loaves and fishes will happen again and the hungry will be fed.

The St. Charles SVDP Food Pantry is located on the Church grounds at 313 Circle Drive, and it is open Tuesday mornings between 10am and noon. It is also open on the second and fourth Tuesday evenings of the month between 5:30pm and 7pm. If you know of someone in need of our services or if you would like to become a member of SVDP, please call us at 262-367-0800.



EXEMPLARY RECOGNITION

During the 2024-2025 school year, we submitted an application for the Archdiocese of Milwaukee's Catholic Schools Exemplary Recognition Program in the category of Mission & Catholic Identity.

After a lengthy and extensive application process, an onsite visit and interviews, and an approval process, we were notified on June 4 that we have earned Exemplary Recognition!

We are overjoyed to be acknowledged for our extraordinary dedication to our school's mission and continuous promotion of Catholic identity in both our classrooms and beyond. Congratulations to our school and parish community!

We will receive this award soon and will share more information at that time. Stay tuned!

BULLETIN ADVERTISERS OF THE WEEK

Please support our advertisers!



BULLETIN DUE DATES!

If you have an event(s) you would like to publicize in the upcoming bulletins, please email your information by 8:00 am on the due dates listed below to lkenyon@stcharleshartland.org.

June 29th bulletin is due Monday, June 23rd

July 6th bulletin is due Thursday, June 26th

July 13th bulletin is due Monday, July 7th



 <p>Full Service Landscape Management</p> <p>262.821.9680 www.groundcrewservice.com</p>	<p>Hartland Terrace Assisted Living</p> <ul style="list-style-type: none"> • RN Lead 24-Hour Elite Care Team • Full Continuum of Care • Memory Care • All Inclusive Pricing • Private Studios • Family Centered Care Model <p>327 North Avenue • Hartland 262-369-4391 www.hartlandterrace.com</p>	<p>Wolf Electric LLC Commercial, Industrial, Residential</p> <p>Garrett Wolf • Master Electrician/Parishioner Commercial • Industrial • Residential (414) 899-3608 • www.wolfelectricllc.com</p>	<p>7 Day Free Trial</p> <ul style="list-style-type: none"> • Personal Training • Group Fitness • Open Gym • And more! <p>Call or text Ryan Zingsheim 262-527-5880</p> <p>RYZING FITNESS • Founded by parish alumni</p>	<p>R&R INSURANCE</p> <p>Rick Kalscheuer Parish Member Tom McInerney Jon Budziny</p> <p>MyKnowledgeBroker.com 800.566.7007</p> <p>we know.</p>
<p>Benjamin Moore</p> <p>Thomas M. Devine Cell: 262-749-4494 Office: 262-303-5129 devine14h@gmail.com 2410 Milwaukee St. Delafield, WI 5318</p>	<p>Culver's 701 Industrial Ct., Hartland 262-367-5800</p>	<p>ARKENSTONE Real Estate Experts Unleash Your Potential. Transform Your Land, Home and Business. 262-510-1096 Elevate your journey with us!</p>	<p>Lake Country Clean Stay Green, Stay Clean</p> <ul style="list-style-type: none"> • Eco-Friendly Standard and Deep Cleaning • Residential and Commercial • Home Organizing <p>www.LakeCountryClean.com Service@LakeCountryClean.com • (262) 332-7729</p>	<p>BUNZEL'S OLD FASHIONED MEAT MARKET Fresh Custom Cut Choice Meats Party Trays • Catering Thank You For Supporting A Family Tradition 9015 W. BURLEIGH 873-7960 www.bunzelmeats.com</p>
<p>FOOT & ANKLE Associates of Wisconsin Parish Member Dr. Amy Galati Call: (262) 542-3779 www.footandanklewi.com</p>	<p>TODD WANGERIN ELECTRIC, LLC Free Estimates • Licensed • Insured Over 20 years experience Todd Wangerin 262-719-4411 twelectric4411@att.net</p>	<p>Pat's Heating, Air Conditioning, & Electrical OVER 30 YEARS OF EXCELLENCE 262-567-7499 • OCONOMOWOC www.patsh Heating.com</p>	<p>Hartland Family CHIROPRACTIC 211 Cottonwood Ave, Hartland (262) 367-7424 www.hartlandchiro.com</p>	<p>TOWN BANK A WINTRUST COMMUNITY BANK 800-433-3076 www.townbank.us</p>
<p>Palmer's STEAKHOUSE www.Palmerssteakhouse.com 122 E. Capitol Dr. • Hartland, WI 262-369-3939</p>	<p>Dental Care that Shines Smile FX Dental GREENFIELD 6919 W Forest Home Ave. Greenfield, WI 53220 414-545-8226 NEW BERLIN 15855 W National Ave. Ste. 104 New Berlin, WI 53151 262-782-4220 Smile@smilefxdental.com</p>	<p>JENSON MOTORS Auto - Truck Repair Hours: Mon-Fri 7:30-5:30 Proprietor: Guy Jenson 262-367-5556 364 Cottonwood Ave., Hartland, WI</p>	<p>JT ARBORISTS 262-719-1440 Mulch Madness Dyed and Hardwood Mulch DELIVERY, PICKUP AND SPREADING OF MULCH IS AVAILABLE Hartland</p>	<p>VISU-SEWER, INC. 262-695-2340 Professional Sewer Inspection, Maintenance and Rehabilitation Services Parish Members www.visu-sewer.com</p>
<p>FALBO PIZZERIA Carry Out ~ Delivery ~ Catering 262-367-2700 FalboPizza.com Pizzas • Subs • Salads • Appetizers Located on 418 Merton Avenue off Hwy 16 in Hartland</p>	<p>CHARLES ST. CHARLES SCHOOL St. Charles School... We choose Christ in learning, living, & values in the light of our faith. 262-367-2040 www.stcharlesschoolhartland.com</p>	<p>LAKESIDE INTERNATIONAL TRUCKS BADGERLAND IDEALEASE Offering Wisconsin businesses transportation solutions nearly 40 years.</p> <ul style="list-style-type: none"> • Truck Sales • Parts • Service • Body Shop • Leasing & Rental <p>SERVING: Milwaukee • Madison • Racine West Bend • Sheboygan • Janesville • Monroe • Rockford</p>	<p>MATHNASIUM The Math Learning Center BROOKFIELD • HARTLAND • OCONOMOWOC www.mathnasium.com</p>	<p>EVERT-LUKO FUNERAL HOME & CREMATION SERVICES Guiding with skillful hands and soulful hearts 262-367-2156 www.evertlukofuneralhome.com</p>
<p>CLINK'S KARPETS, INC Hartland's Floor Covering Center Family Owned & Operated for over 47 Years Carpeting & Hard Surfaces 107 North Ave. Hartland, WI 367-4670 Parish Member</p>	<p>INSIGHT INVESTMENT ADVISORS BRANDON BRUCKMAN 414-882-8738 www.investwithinsight.com</p>	<p>DAVE PERRY heating & cooling Proudly Serving the Lake Country Area for more than 20 years Heating • Air Conditioning • Geothermal New Construction • Replacement 262.966.1959 www.daveperryheatingandcooling.com</p>	<p>Broaching Technologies Machines • Tooling • Subcontracting Blind and Thru Hole: www.keyway-spline-broaching.com Broaching, Splining, Keyseating, P (262) 820-1200 Slotting, Shaping sales@broachingtech.com</p>	<p>CMC CUSTOM MADE CARPENTRY For All Your Remodeling Needs! KITCHEN & BATH REMODELING COMPLETE HANDYMAN SERVICES JIM FISCHER fischerjames29@gmail.com 414-614-7329</p>



