



# Parent Packet

## 2026

# Beltway Kids Leadership Contact Information

## **Wendy Hollabaugh**

Family Pastor

214-728-1665

[wendyhollabaugh@beltway.org](mailto:wendyhollabaugh@beltway.org)

## **Michael Smith**

South Campus Elementary Pastor

214-455-4179

[michaelsmith@beltway.org](mailto:michaelsmith@beltway.org)

## **Dacy Ivy**

North Campus Elementary Pastor

903-203-5751

[dacyivy@beltway.org](mailto:dacyivy@beltway.org)

## **Mya Thomason**

South Campus Associate Elementary Pastor

620-404-0155

[myathomason@beltway.org](mailto:myathomason@beltway.org)

## **Josh Williamson**

North Campus Associate Elementary Pastor

806-206-2423

[joshwilliamson@beltway.org](mailto:joshwilliamson@beltway.org)

## **Stay Connected!**

**Facebook: Beltway Kids**

**Instagram: @beltwaykids**

All things camp: [beltway.org/kidscamp](http://beltway.org/kidscamp)

Find out more about Lakeview Camp @ [lakeviewcamp.net](http://lakeviewcamp.net)

If you need to get in touch with us while we're at camp, please call the Lakeview Camp Office @ 972-923-3811. (Cell service can be inconsistent.)



## Theme: Stand Up



*"Therefore take up the whole armor of God,  
that you may be able to withstand in the evil day,  
and having done all, to stand firm."*

**Ephesians 6:13 (ESV)**

### Daily Messages

**Monday PM: Mya Thomason – Choose to Stand**

**Tuesday AM: Josh Williamson – How to Stand**

**Tuesday PM: Dacy Ivy – Stand Firm**

**Wednesday AM: Christi Reed – Stand Down**

**Wednesday PM: Michael Smith – Stand Strong**

**Thursday AM: Victoria Sullivan – Stand in Your Story**

**Thursday PM: Wendy Hollabaugh – Stand Bold**

We are expecting God to call children to choose Him this week. We are asking Him to help us STAND, with Holy Spirit, in the way we think, pray, speak, worship, and live so that it all reflects our relationship with Him and changes our lives!

### **Join us in praying – even now!**

- Each camper and leader to encounter the Lord
- Safety and protection for travel and while at camp
- Lasting impact from this week – not just a “camp high”
- Peace for any anxiety about sending kids to camp for the first time
- Life-giving friendships to be made
- Holy Spirit to show up! ☺

## **Kids Camp Check-In**

**Wednesday– June 10<sup>th</sup>, 6:15pm-8:15pm**

- Check-in @ Beltway South Campus – Southwest Entry to Gym
- Receive luggage tags, deliver meds to medical staff, drop off mail for kids, and make final camp payments.
- 5<sup>th</sup> graders check-in Nerf guns as well.

# Kids Camp Overview

- **Beltway Park is one church in two locations!** We do Kids Camp together! (North, South, and West Texas Church in Lubbock)
- **Cabins** (Gender & Grade)
- **Teams** (Gender & Grade)
- **Mail at camp - FIRST & LAST NAME – One Mail-Time Night** (bring to church or to Wednesday check-in June 10<sup>th</sup> @ 6:15pm in the gym)
- **Camp Shirts** (included in your cost)
- **Snack Shack** (included in your cost, 1 snack/1 drink)
- **Extra \$\$ for Camp Store** (Suggested \$20-\$30)
- **All medications** will be checked in with our Medical Team & given only by them as well
  - **Bring just enough medications for the week in original packaging PLEASE!!!** Labeled first/last name. Use Forms.
  - Do NOT need to send as needed allergy, headache, or other over-the-counter medicines. (If you have question, ask the Med Team)
- **Daily snack in the evening** before bedtime
- **Drink Water...Water...Water...Water...Water...Water...Water...Water...**
- Prepare now – **pray** for our kids & leaders who are going this year
- Regular updates through **Clearstream text**.
- **Please, do not ask a leader to give you updates** 😊. Camp leadership can do it.
- Check **Social Media** for pictures and videos.

## Wellness Policy

Our desire is for everyone who goes to camp with us to have an incredible experience. Our wonderful team of nurses and others will be helping us with this as well! Please help us by heeding the following guidelines:

### **Please do not come to camp if you...**

- Have run fever within 24 hours of our departure
- Have thrown up within 24 hours of our departure
- Have had lice within 1 week of our departure
- Any sickness that could be contagious

*Thank you!*

# Camp Details

## Activities at Camp

- Crafts, OMC, REC, Lake Time (2)
- Jumping Pillow, Sand Volleyball, Archery, etc. (Not every grade)
- Other Available: Human Foosball, Low Ropes Course, Gaga Ball, etc.
- Daily Worship & Teaching (Rise & Shine and Celebration)
- ECHO (Hip Hop, Sword Warriors, or Sign Language)
- Small Group Time (devotional)
- Snack Shack
- Camp Store\$\$ (Suggested \$20-\$30)

## Theme Days *(also in packing list)*

- **Monday: Red Shirt** (Travel day)
- **Thursday: Camp T-Shirt** (Will receive at camp)

## Camp Week

### Monday Schedule – June 15<sup>th</sup>

**9:30am - Leaders/Nurses check-in @ Beltway South Campus**

**10:00am - Check-in for those *NOT pre-checked* on Wednesday.**

Please make every attempt to check-in on Wednesday.

Contact a staff member if you need to check in on Monday.

**10:30am - Camper check-in w/ sack lunch @ Beltway South Campus**

11:45am - Departure on buses from Beltway South Campus

3:00pm(est) Arrive @ Lakeview Camp in Waxahachie, TX

<b>Monday Schedule</b> <u>First day of camp</u>	<b>Tuesday/Wednesday</b> <u>Sample Schedule</u>	<b>Thursday Schedule</b> <u>Last day of camp</u>
<ul style="list-style-type: none"> <li>• Orientation</li> <li>• Team Building Time</li> <li>• Dinner</li> <li>• Celebration Service</li> <li>• Small Group/Evening Snack</li> <li>• 5<sup>th</sup> Grade Activities</li> <li>• Cabins</li> <li>• Lights Out</li> </ul>	<ul style="list-style-type: none"> <li>• Breakfast</li> <li>• Rise &amp; Shine (Split large group to start the day; 2<sup>nd</sup>/3<sup>rd</sup> &amp; 4<sup>th</sup>/5<sup>th</sup>)</li> <li>• Activities</li> <li>• Lunch</li> <li>• Activities</li> <li>• Celebration</li> <li>• Dinner</li> <li>• Activities/Evening Snack</li> <li>• Small Group</li> <li>• Cabins</li> <li>• Lights Out</li> </ul>	<ul style="list-style-type: none"> <li>• Breakfast</li> <li>• Rise and Shine</li> <li>• ECHO</li> <li>• Pack up</li> <li>• Small Group</li> <li>• Lunch</li> <li>• Celebration</li> <li>• Load Buses and Travel Home (Approx. 2pm)</li> <li>• 5:00pm-6:00pm (estimated) Arrive @ Beltway Park South Campus <i>*We will text updates.</i></li> </ul>

# Packing List

## (LABEL EVERYTHING)

### **Check-in** Wednesday **June 10<sup>th</sup>**, 6:15-8:15pm:

- **Any medication** needed for the week
  - Only the amount needed for camp in original packaging.
  - Will be turned into our Medical Team at check-in.
- **Mail** for your student to receive on Wednesday (One-Mail-Time Night)
  - Labeled First & Last Name and day to receive

### **Monday (Travel Day):**

- Suitcase (One)
- Carry-on bag for the bus (One)
- Pillow (can be on bus with you)
- Sleeping bag and/or twin sheets and blanket
- **Red Shirt** for Monday travel (wear it, don't pack it! 😊)
- **DISPOSABLE sack lunch** for Monday travel. Gatorade and water will be provided. We will also provide an additional snack on the bus.
- **No cellphones, Ipads, or anything that does photo, video, or WIFI.**

### **For the Week:**

- \*Every camper and leader will receive a drawstring backpack for camp!
- **Clothing:**
  - Comfortable, appropriate clothing for each day (shorts & t-shirts are recommended; Pajamas for sleeping)
  - **Theme Days:**
    - Monday: **Red Shirt** (*Travel day*)
    - Thursday: **Camp T-Shirt** (*received at camp*)
  - **Pro-tip:** Pack in a gallon-size Ziploc bag labeled for each day!
  - **Please follow school dress-code guidelines:**
    - Shorts not shorter than fingertip length with arms at your side
    - No tank tops or spaghetti straps
    - Tights/Yoga Pants must have a long shirt that covers appropriately

- **Close-toed shoes** (we are very active, lots of walking, etc); Not cros ☺ preferably  
Flip flops and cros okay for showers; pool; or to and from Lake
- **Swimsuit** (no 2-piece)
  - If you have a 2-piece, you will need to wear a long dark  
T-shirt over it
- **Other Items:**
  - \*Every camper and leader will receive a drawstring backpack ☺
  - Bible/Notebook/Journal
  - Pen/Pencil
  - Toiletries for the week (Toothbrush, toothpaste, deodorant, shampoo, etc.)
  - 2 Towels (shower & swimming)
  - Twin Sheets or Sleeping Bag, and Blanket
  - Chapstick, Sunscreen and Hat
  - Flashlight (Optional)
  - Water Bottle (Non-expensive, mostly for nighttime)
  - Spending \$\$ for Camp Store - Recommended \$20-\$30 max.

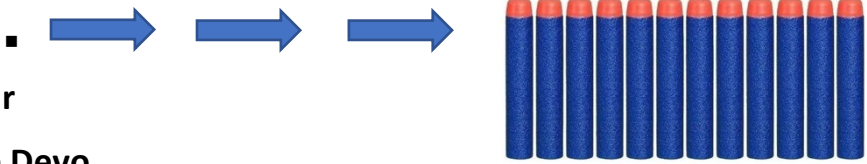
## **Anti-Packing List**

***(Please don't send these things ☺ )***

- **ELECTRONICS:**
  - **Cell phones, iPads, tablets, or other devices that connect to wifi or internet, or have downloaded pictures or videos** (campers only)
  - If you send it, we will take it up from them for safe keeping during the week.
  - Video games that honor the above guidelines can go for on the bus, **but NOT at camp**. Not recommended, but allowed.
  - Headphones, earbuds, airpods, etc.
    - We are not responsible for lost or damaged items
    - Not having these items helps them focus
- **Real or disposable camera**
- Immodest clothing
- 2-piece swimsuits (or must be covered with a long dark t-shirt)
- Curling Irons or Flat Irons
- Snacks to keep in the cabins (we don't want critters!!)
- Bug spray – we will provide as needed
- Lighters, Fireworks, Pranks, Drugs, Alcohol, Tobacco, Vaping products

# 5<sup>th</sup> Graders!

## 5th Grade Activities

- Extended Snack Shack Time
- Nerf War
  - Nerf guns checked in on **Wednesday June 10<sup>th</sup>**
    - (MUST take out of packaging & label them)
  - Bring eye protection
  - Must use regular dart ammo or will not be able to use their gun!
    - 
- Color War
- 5<sup>th</sup> Grade Devo
- Outdoor Pool/Night Swim

## 5<sup>th</sup> Grade Packing List *(In addition to the previous list)*

- Clothes that can be damaged in color war (recommend something **dark colored**) **\*NOT WHITE**, please. Campers will get wet at Color War!
  - **Color powder may come out**, but not guaranteed
  - **Plastic bag** for these colored clothes ☺
  - **5<sup>th</sup> grader leaders and campers will be provided a Color War shirt.**
- **Nerf Gun** (be sure to label!!!) (**Basic Nerf dart type only**)
- Eye Protection (optional to bring; must wear to play; will have extra)

## Monday Morning Reminders

- Leaders arrive South Campus 9:30am, June 15
- Campers arrive South Campus 10:30am (WC)
  - Use west entrance (sliding doors)
- Wear **RED SHIRT**
- Remember your **sack lunch and luggage**

---

## Thursday Pick Up Information

Parents,

On Thursday, June 18, we will return from Kids Camp at Lakeview! We're excited to see you and share about all the incredible things of camp and what God did this year! **Please be aware of our pick-up process.**

**We will be requiring a Drivers License/Photo I.D. for picking up your kiddos.**

Here's how this will work:

**The name you listed on Wednesday, June 10th @ Check-in:**

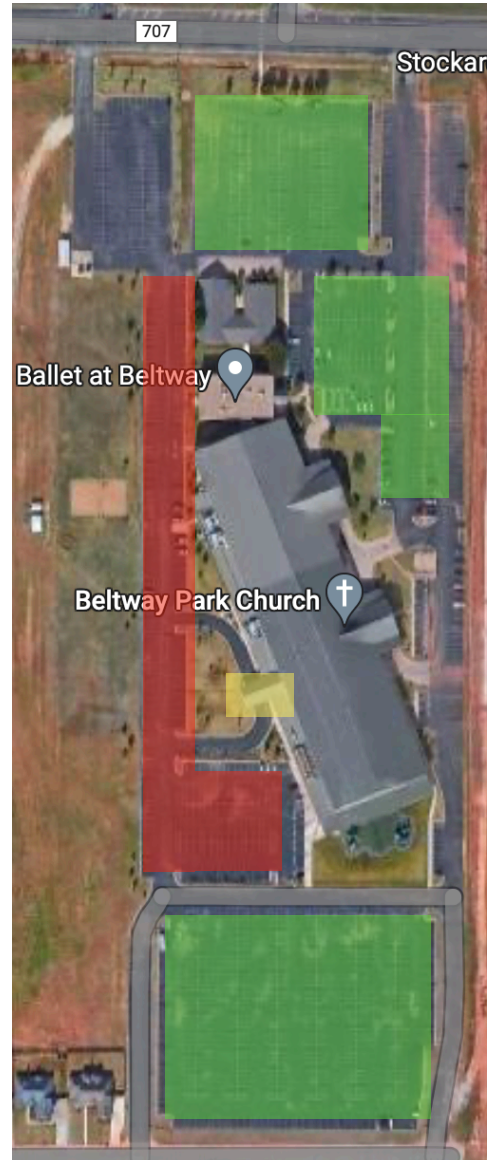
- You provided the first and last name of the adult(s) who will be picking up the child on Thursday.

**Thursday, June 18 - Kids Camp Return (\*5-6pm)**



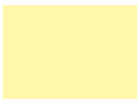
- Keep an eye on social media and texts for updates as we get closer to Abilene. We will update to let you know a more accurate time as we travel.
- Parents will need to park in one of the green areas indicated on the map
- Parents/Adults picking up will need to find your child's luggage/bedding as the cargo from the buses are unloaded
- Campers will remain on the buses during this time
- Parents/Adults will line up at the bus door - with luggage - ready to pick up their camper.
- Parents/Adults on the pick-up list will show their Drivers License or Photo I.D. to the Kids Camp Leaders at the bus door and your camper will be released to you

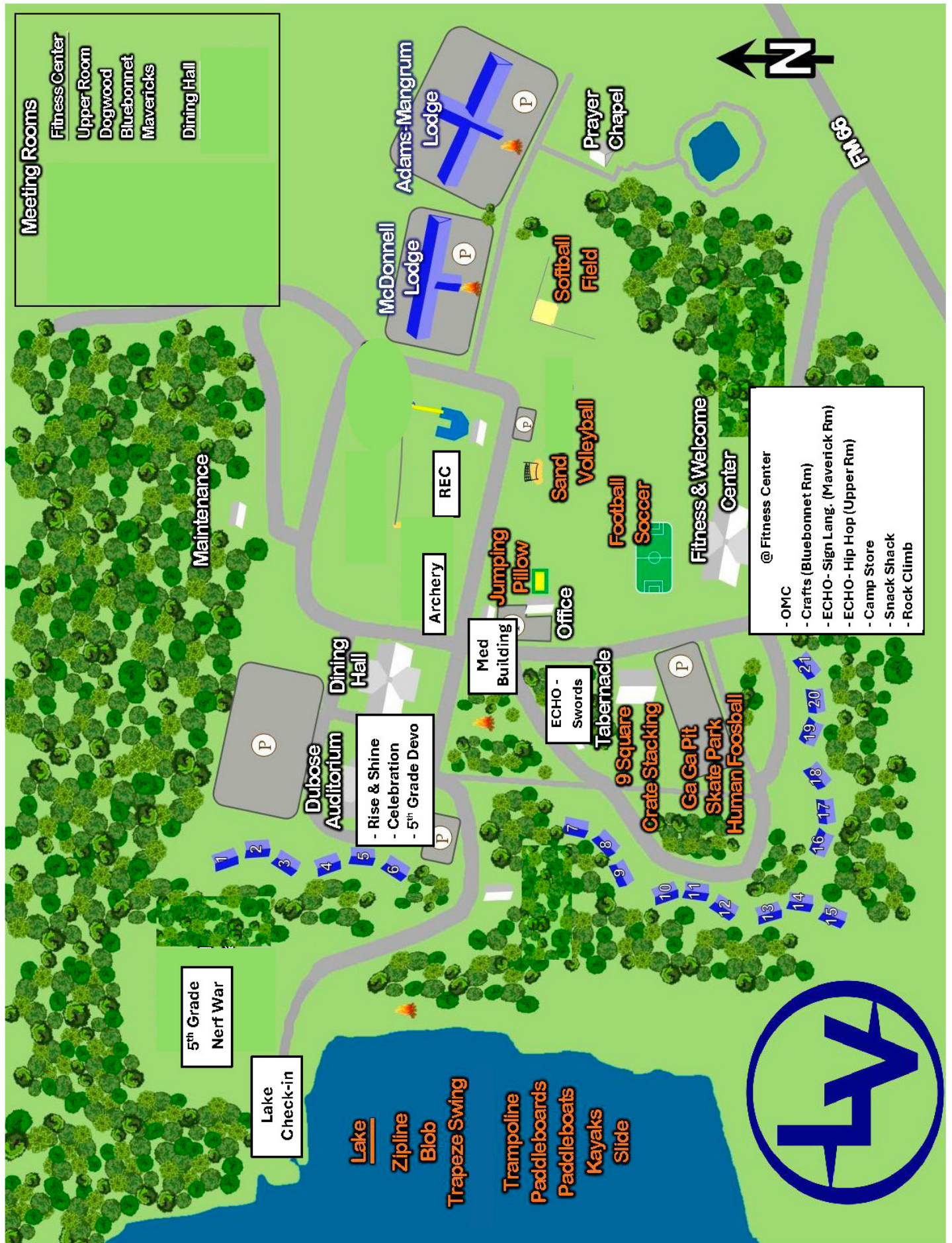
**Other notes:**

- Medications, Lost & Found items, and Nerf Guns will all be available under the portico on the west side of the building (marked in yellow on the map).



**Beltway Park South Campus**

	Parent Parking
	No Parking Foot traffic only
	Medications Lost & Found Nerf Guns



- Meeting Rooms**
- Fitness Center
  - Upper Room
  - Dogwood
  - Bluebonnet
  - Mavericks
  - Dining Hall

- @ Fitness Center**
- OMC
  - Crafts (Bluebonnet Rm)
  - ECHO- Sign Lang. (Maverick Rm)
  - ECHO- Hip Hop (Upper Rm)
  - Camp Store
  - Snack Shack
  - Rock Climb

- Dubose Auditorium**
- Rise & Shine
  - Celebration
  - 5th Grade Devo

**5th Grade Nerf War**

**Lake Check-in**

- Lake
- Zipline
- Blob
- Trapeze Swing
- Trampoline
- Paddleboards
- Paddleboats
- Kayaks
- Slide

