



700 High Street
Worthington, OH 43085
(614) 846-5180
StJohnsWorthington.org

The Rev. Gia Hayes-Martin,
Rector

The Rev. David Burman,
Assoc. Rector

Stephen Sollars,
Organist

Nicolas Taylor,
Choral Director

Bella Olmstead,
Parish Engagement Coordinator

Advent and Christmas at St. John's

The season of Advent, the four weeks leading up to Christmas, might be my favorite in the Christian calendar. Advent has two faces: it looks backward to Jesus' coming into the world two thousand years ago in Bethlehem, and it looks forward to his coming again at some time in the future. People often regard Jesus' coming again with fear or dread, but for me, it's the greatest hope we have as Christians. When Jesus comes again, this broken, hurting world will pass away, and God will make all things, all people, all creation new. For the four weeks of Advent, we get to look with hope toward God's coming renewal of the world.

St. John's Advent series, *What's the Deal with Revelation?*, will meet on Wednesday evenings, December 4 through December 18, in Kilbourne Hall at 7:00 p.m. Each evening will begin with Evening Prayer, then David and I will lead some learning about the book of Revelation before we close with Compline. Revelation is probably the most challenging book of the Bible: it is weird, it's violent, and it has been terribly misinterpreted by people with an agenda. It also offers us profound hope: it's the source of that vision of God remaking the world, which makes it a timely subject for Advent. We'll consider what's in the book of Revelation, the context in which it was written, and how to understand it responsibly today. RSVPs are not necessary, but please bring a Bible (any translation) and a Book of Common Prayer with you if you have one. Childcare can be available by advance request; please let me know as soon as possible that you will need it.

Christmas Eve falls on a Tuesday this year, and St. John's will have its customary schedule of services. On December 24, the children's pageant and Holy Eucharist will be held at 4:00 p.m. Two festival services of Holy Eucharist with the choir singing will be held at 7:00 p.m. and 9:00 p.m. (The 9 p.m. service begins with an extended prelude of choir music.) On Wednesday, December 25, Holy Eucharist with carols will be held at 10:00 a.m. We'll have our usual Sunday services on December 29.

Perhaps what I love the most about Advent is that absolutely none of it depends on our efforts. Jesus will be born whether we have found the perfect present for everyone on our list, hosted a stunning holiday party, and sent out all our Christmas cards on time or not. God will make all things new whether we human beings have fixed all the world's problems or not. All we have to do is notice where Jesus is being born, where God is remaking the world, and accept what God wants to give us. I pray that God finds you with peace, comfort, hope, and joy in this holy time.

Blessings, Gia+

Christmas at St. John's

December 24, Christmas Eve

Children's Pageant and All-Age Eucharist, 4:00 p.m.

Festival Eucharist, 7:00 p.m.

Festival Eucharist with choir prelude, 9:00 p.m.

December 25, Christmas Day

Holy Eucharist with carols, 10:00 a.m.

December 29, First Sunday after Christmas Day

Holy Eucharist, 9:00 a.m.

Holy Eucharist, 11:15 a.m.

Office Closings

December 25

Christmas Day

December 26

Day After Christmas

January 1

New Year's Day

Christmas Flowers

St. John's Flower Guild is asking parishioners to make a donation towards Christmas flowers. Remember family members and friends by donating any amount to St. John's Flower Guild. If you have a special "request" there are forms on the table in the Atrium to be completed and attached to your donation. There are envelopes in the pews to use for your donation and place in the offertory plate. We ask all donations and requests be submitted by Sunday, December 21, 2024.

Flower Chart

A new Flower Chart for 2025 Flower Donations will be hung in Atrium between Christmas and New Year's. Please sign your name and phone number on a date you would like to donate flowers. There can be more than one person donating on a given date. A member of Flower Guild will phone you prior to the date and ask for information about your request. For any questions, contact Donna Somerville at (614) 208-8573.

Christmas Pageant

Do you have a kiddo who'd like to be cast in our Christmas Pageant? Please bring them to our rehearsal on Sunday, December 15th at 10:15 am between the services in Kilbourne Hall. If you'd like your kid to be in the pageant but can't make it on December 15th, please let David Burman know at davidb@stjohnsworthington.org. The pageant itself will be part of the 4:00 pm service on Christmas Eve, Tuesday, December 24.

David Burman



Singles Dining Out

Eighteen ladies gathered at Nicola Restaurant and Bar for our November Singles Dining Out, enjoying authentic Italian fare with homemade pasta in an elegant setting. Stimulating conversations rippled up and down the table. December will be a busy month, and there will be an Advent series on Revelation on Wednesday nights, so Singles Dining Out will take a break from dining out in December.

Our January Singles Dining Out adventure will find us at **J. Alexander's** on **Wednesday, January 22, at 6:00 pm**. J. Alexander's is located at 7550 Vantage Drive, Columbus, Ohio 43235. You can find J. Alexander's menu at www.jalexanders.com/menus/0004.pdf. Please RSVP to Donna Deremer-Hissrich at 614-203-3562 or donna.hissrich@gmail.com so she can let J. Alexander's know the size of our group. We hope you can join us!

Singles Dining Out is an informal group of St. John's parishioners and friends, always happy to welcome new participants. Singles and married individuals who will be attending without their spouse are welcome to participate, and feel free to invite a friend who is not a member of St. John's.

Mary Bailey



Facing Loss

There will be no Facing Loss meeting nor Loss Lunch in December.

Facing Loss will restart in January with our 3rd Monday meeting on January 20 at 1:00 PM in the 'Living Room' at Worthington Presbyterian Church. Our speaker will be a Grief Counselor from Kobacker House.

The 4th Monday Lunch at Worthington La Chatelaine will resume on January 27 at 12 noon. No reservation is needed. Just come to the back room.

If you know someone who is grieving or lonely this holiday season, invite them to coffee or lunch. Time is our most valuable gift to each other.

If you have questions or if you need us, contact Cynthia, SJE Co-chair, at 614-847-9529 or cwoodbeck235@gmail.com or Louann Shearer, WPC Co-chair, at 567-377-3194.

Cynthia Woodbeck

Upcoming Baptism Dates

St. John's will celebrate the sacrament of Baptism at both services on Sunday, January 5, the feast of the Baptism of Our Lord. The next scheduled date after that is the Great Vigil of Easter, Saturday, April 19, at 7:00 p.m. Other dates can be arranged. If you are interested in Baptism for yourself, or your child, please contact Gia or David Burman.

Garden Glories!

“While insects may bug humans, they play a critical role in our ecosystem. They clean up waste, pollinate plants, and feed countless forms of wildlife. Insect hatches are so crucial to bird migration that many species in North America plan their entire migration according to the peak abundance of insects.” Audubon Society

Giving bugs safe harbor for the winter is one of the goals of autumn. St. John’s Prairie Garden is a natural haven for insects of all kinds, so we leave the dried stalks standing for a winter home for the insects that will, in turn, provide sustenance for pollinators. Other gardens may also have perennials left in place for shelter.

As we work to prepare the gardens for winter, we hope you will join us. Everyone is welcome to help tend our twenty+ garden beds. Our Autumn garden work will continue on November 30th and December 14th. We meet at 1:00 pm at the sheds.

Ellen Stukenberg and Wendy Ciriegio
for the Lay Weeders

Willing Hands and an Open Heart Make a Difference!

Thank you to Ted Dziemianowicz, Karen Graham, Lily Balukjian-Thompson, Luanne Hall-Stoodley, Brian Duncan, and Jean Duncan for the work they did at our Habitat for Humanity Northside Partnership house build on October 12th! These St. John’s volunteers shared their time, helping to develop a community by building a home that will inspire hope and empower a family.

Want to help? Contact Jean Duncan at jeanduncan59@msn.com for information!



Street Church

St. Stephen’s and St. John’s collaborated together on the November Street Church ministry. A much appreciated hot meal was served to approximately 55 guests!



Early Education Center

This past month, teachers were busy teaching students about life in the past. Our Enrichment Class had a visit from Mr. Alan Lines and his 1931 Ford Model A. The children got to climb inside the car, see the engine and even honk the horn. Earlier in the month the four and five year old classrooms took a field trip to Highbanks Metro Park to see the Adena mound and learn about the Adena people and their culture. Finally, our Enrichment Class took a walking field trip to the Orange Johnson House. Students and teachers stepped back in time to nineteenth-century Worthington and learned about how life was different for the people who lived then.

Art Club is in full swing! Mrs. Carey has created wonderful crafts that celebrate the season. Students have worked with pencils, paints, pastels and recycled materials to make wonderful masterpieces.

This month, we will be having our Holiday Open House. Students and their families will hop on an imaginary train to see how holidays are celebrated around the world. Our holiday train will have stops in rooms around the preschool and include a visit to the North Pole to see Santa! Each stop will feature different cultural traditions from places like Mexico, France and Germany.

We are still enrolling! If you, or anyone you know has a three, four or five year old looking for an excellent part-time preschool, please give us a call so that we can set up a tour. You can find more information about our current events and programs at www.sjpreschool.com.

Carrie Troester
SJEEC Director



Food Pantry

In Advent, we prepare our hearts and minds to receive God's perfect gift to us, His Son Jesus. The excitement and busyness of the season, with all the shopping, baking, cleaning, decorating, singing, wrapping, and traveling, may cause us to lose focus on God's life-changing gift. As our hearts overflow with thanks and joy and love, may we find room in our hearts for those of God's children who need a helping hand at Christmas, giving gifts to others and serving as Christ's heart and hands and feet in the world. When we share our gifts, we are sharing the love of Immanuel, God with us. May we reach out with joyful and generous sharing in our December and January contributions to our two Food Pantries.

- You and your family may have fun creating a Food Pantry Advent Calendar – see page 7 for a great way to observe Advent and help a Food Pantry family. You may bring your completed boxes to the atrium any time from Christmas Eve through January 5, and they will be delivered to the Worthington and Gladden pantries early in January.
- If you will be hosting a party during the holidays, consider inviting your guests to bring a Food Pantry donation to the party. You can then bring the donations to the Food Pantry baskets at church or deliver them to a Food Pantry of your choice.
- If you would like to help our pantries in preparing hundreds of Christmas dinner baskets, please consider augmenting your regular Food Pantry donations with an extra “Christmas Dinner” donation each week before Christmas. You can help make these baskets possible with your contributions of canned fruit, canned corn, green beans, sweet potatoes, stuffing mix, spices (sage, nutmeg, thyme, cinnamon), flour, sugar, gravy, chicken broth, cornbread or hot roll mix, cranberry sauce, canned pumpkin or other pie filling, evaporated milk, pie crust mix or pie shells, nuts, mashed potato mix, gingerbread mix, Christmas cookies or candy. Even things like turkey cooking bags, aluminum foil, and freezer bags are helpful.
- A turkey or ham and some perishable items will need to be purchased for each of the Christmas baskets, so monetary donations are also gratefully received and wisely spent. Both the Worthington Resource Pantry and the Gladden Food Pantry can amplify the impact of every dollar donated, as they can purchase \$4 worth of food for every \$1 donated. You can donate financially to the Worthington Resource Pantry at www.worthingtonresourcepantry.org/donate or you can send a check to PO Box 27; Worthington, OH 43085. You can donate to the Gladden Pantry in Franklinton at www.gladdenhouse.org/food-pantry or send a check to Gladden Food Pantry, 318 S. Glenwood Ave., Columbus OH 43223.

Your own Christmas celebration will be more meaningful when you know you have helped others enjoy a festive holiday dinner and healthy meals in December and January as well.

December 1 – rice, toothpaste & a Christmas dinner item

December 8 – granola bars, shampoo & a Christmas dinner item

December 15 – chunky soup, deodorant & a Christmas dinner item

December 22 – canned fruit, toilet paper & a Christmas dinner item

December 29 – baby food, formula, large diapers (3-4-5-6)

January 5 – oatmeal, cereal, pet food

January 12 – peanut butter, facial tissues

January 19 – spaghetti sauce, baby wipes

January 26 – applesauce, feminine pads

Mary Bailey

Food Pantry Advent Calendar



A tradition of Advent calendars began in my family when I was 13, when my mother bought a lovely German Advent calendar and set it up on our piano – my three sisters and I took turns opening the little doors each day. I have been collecting Advent calendars ever since then, and between my daughter and me, we have over 100 Advent calendars, including that special one my mother bought over 60 years ago. I still put up Advent calendars all over my house every December.

Do you or your family have an Advent calendar every December? What if each of us at St. John's embarked on compiling a Food Pantry Advent Calendar? As the Magi brought gifts to the Christ Child, we can bring gifts to our hungry neighbors. Find a sturdy box and add one item to the box each day from December 1 to December 24. If

you have children, let them help pick out the items for the box. As you add a can, box, or bottle to the box, say a prayer for the person or family who will receive the box. However many Food Pantry Advent boxes we collect, we will deliver half of them to Worthington Resource Pantry and half of them to the Gladden Food Pantry after Christmas.

Mary Bailey, on behalf of our Food Pantries

December 1 – cereal or oatmeal

December 2 – peanut butter

December 3 – stuffing mix

December 4 – mashed potatoes

December 5 – rice

December 6 – toothpaste

December 7 – canned fruit

December 8 – canned tomatoes

December 9 – canned tuna or chicken

December 10 – applesauce

December 11 – granola bars

December 12 – deodorant

December 13 – canned beans

December 14 – crackers

December 15 – macaroni and cheese

December 16 – pasta

December 17 – spaghetti sauce

December 18 – shampoo

December 19 – chunky soup

December 20 – canned corn

December 21 – ground coffee

December 22 – chicken noodle soup

December 23 – dessert mix

December 24 – facial tissues



Churchyard Preservation Project

Having finished up the 2024 season of outdoor physical preservation with a pair of long-overdue levelling/straightenings (first 2 photos), Nancy and Ted (and canine pal Gracy) hit the road with a plan to visit historic east coast Episcopal churches that have churchyards. We chose our sites carefully, looking for opportunities to gain an understanding of, and insights into varying approaches to:

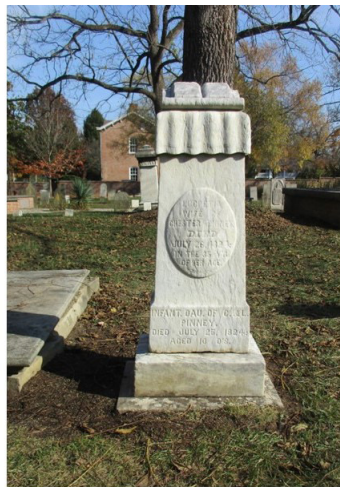
- Churchyard preservation programs
- Gravestone/marker repairs and routine maintenance
- Grounds management
- Burials information management
- Enclosures (fences, hedges, et al)
- Community engagement
- Access policies
- Signage
- Educational materials
- Funding sources tapped

As of the submission deadline, we had completed our first visit, Immanuel on the Green Episcopal church in New Castle, Delaware, a congregation which, dating back to 1698, is among the oldest continuously operating ones in the United States (3rd photo).

Other planned churchyard stops are Gloria Dei (formerly Old Swedes) in Philadelphia, St. David's in Radnor, PA, Allentown Presbyterian (New Jersey), Christ Episcopal (Stratford, CT), St. Mark's (New Canaan, CT), and Christ Church / Tashua Burial Ground (Trumbull, CT).

When we return, we will share our findings and also offer some thoughts on how plans for our own churchyard could be influenced by what we learned.

Nancy Elkington & Ted Dziemianowicz



GRAVE MARKER OF LUCRETIA PINNEY AND INFANT DAUGHTER WHO DIED IN CHILDBIRTH, 1824
LEVELLED BY JOHN ROSS AND TED, THEN CLEANED BY LYNN BIRD, COMMUNITY VOLUNTEER



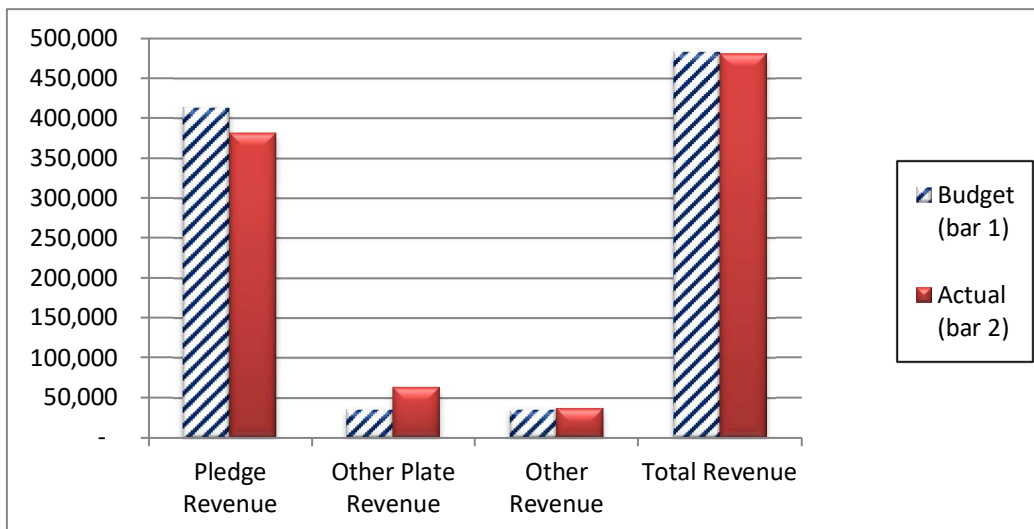
NANCY LEARNING FROM BOB DAVIS, IMMANUEL CHURCH HISTORIAN,
ABOUT THEIR POLICIES, PRACTICES AND HISTORY

FINANCIAL SUMMARY FOR THE TEN MONTHS ENDED OCTOBER 31, 2024

	<u>Budget</u>	<u>Actual</u>	<u>(Under) or Over Budget</u>
<u>Operating Revenue:</u>			
Pledge Contributions	412,125	381,127	(30,998)
Other Plate Contributions	35,000	62,753	27,753
Other Revenue	35,000	36,701	1,701
Total Operating Revenue	482,125	480,581	(1,544)
<u>Operating Expenses:</u>			
Human Resources Expense	395,652	386,479	(9,173)
Diocesan Expense	92,830	54,243	(38,587)
Other Administrative Expense	24,292	20,622	(3,670)
Building & Grounds Expense	134,400	124,525	(9,875)
Special Purpose Expense	0	13,626	13,626
Committees Expense	34,205	26,068	(8,137)
Total Operating Expenses	681,379	625,563	(55,816)
Operating Cash Flow	(199,254)	(144,982)	54,272

Financial Summary:

At the end of October, our pledge contributions were under budget by \$31,000; our other plate contributions (which consist primarily of contributions from non-pledging members and plate cash) were over budget by \$27,800; and in total, our revenues were over under by \$1,600. In total, our operating expenses were under budget by \$55,800, which, in combination with our revenues, left us with a negative cash flow of \$145,000. Our operating deficit was supplemented with planned withdrawals from our Property and Staff investment accounts.



December Calendar

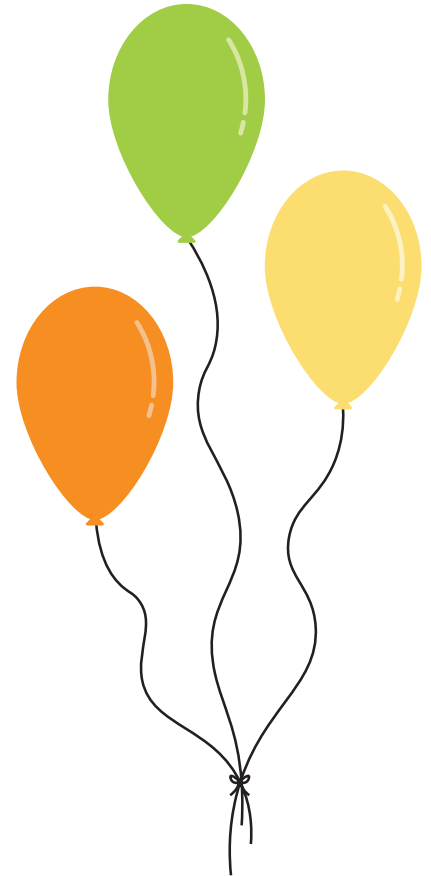
Sun., December 1, 9:00 AM	Worship in the Nave
Sun., December 1, 11:15 AM	Worship in the Nave with Streamed Service on YouTube
Sun., December 1, 4:00 PM	Celtic Worship in the Atrium
Mon., December 2, 1:00 PM	Centering Prayer with Teri Foley-Nelson
Wed., December 4, 10:00 AM	Wednesday Worship and Bible Study in the Nave
Wed., December 4, 7:00 PM	Advent Series in Kilbourne Hall: What's the Deal with Revelation?
Thurs., December 5, 7:00 PM	Choir Rehearsal
Sun., December 8, 9:00 AM	Worship in the Nave
Sun., December 8, 11:15 AM	Worship in the Nave with Streamed Service on YouTube
Sun., December 8, 2:00 PM	Youth Group at St. Stephen's
Mon., December 9, 1:00 PM	Centering Prayer with Teri Foley-Nelson
Mon., December 9, 7:00 PM	Outreach and Social Justice Committee
Tues., December 10, 5:30 PM	Finance Committee on Zoom
Wed., December 11, 10:00 AM	Wednesday Worship and Bible Study in the Nave
Wed., December 11, 7:00 PM	Advent Series in Kilbourne Hall: What's the Deal with Revelation?
Thurs., December 12, 6:00 PM	Friendship Dinner in the Undercroft
Thurs., December 12, 7:00 PM	Choir Rehearsal
Sat., December 14, 1:00 PM	Lay Weeders
Sun., December 15, 9:00 AM	Worship in the Nave
Sun., December 15, 11:15 AM	Worship in the Nave with Streamed Service on YouTube
Sun., December 15, 2:00 PM	Youth Group at St. John's
Mon., December 16, 10:00 AM	Centering Prayer with Teri Foley-Nelson
Tues., December 17, 7:00 PM	Vestry in the Atrium and on Zoom
Wed., December 18, 10:00 AM	Wednesday Worship and Bible Study in the Nave
Wed., December 18, 7:00 PM	Advent Series in Kilbourne Hall: What's the Deal with Revelation?
Thurs., December 19, 7:00 PM	Choir Rehearsal
Sun., December 22, 9:00 AM	Worship in the Nave
Sun., December 22, 11:15 AM	Worship in the Nave with Streamed Service on YouTube
Mon., December 23, 1:00 PM	Centering Prayer with Teri Foley-Nelson
Tues., December 24, 4:00 PM, 7:00 PM & 9:00 PM	Christmas Eve Worship Services in the Nave
Wed., December 25, 10:00 AM	Worship in the Nave with Streamed Service on YouTube
Wed. & Thurs., December 25-26	Office Closed for Christmas Holiday
Sun., December 29, 9:00 AM	Worship in the Nave
Sun., December 29, 11:15 AM	Worship in the Nave with Streamed Service on YouTube
Mon., December 30, 10:00 AM	Centering Prayer with Teri Foley-Nelson

January Calendar

Wed., January 1	Office Closed for New Year's Day
Thurs., January 2, 7:00 PM	Choir Rehearsal
Sun., January 5, 9:00 AM	Worship and Baptism in the Nave
Sun., January 5, 11:15 AM	Worship and Baptism in the Nave with Streamed Service on YouTube
Sun., January 5, 4:00 PM	Celtic Worship in the Atrium
Mon., January 6, 1:00 PM	Centering Prayer with Teri Foley-Nelson
Thurs., January 9, 6:00 PM	Friendship Dinner in the Undercroft
Thurs., January 9, 7:00 PM	Choir Rehearsal
Sun., January 12, 9:00 AM	Worship in the Nave
Sun., January 12, 11:15 AM	Worship in the Nave with Streamed Service on YouTube
Mon., January 13, 1:00 PM	Centering Prayer with Teri Foley-Nelson
Mon., January 13, 7:00 PM	Outreach and Social Justice
Tues., January 14, 5:30 PM	Finance Committee on Zoom
Thurs., January 16, 7:00 PM	Choir Rehearsal
Sun., January 19, 9:00 AM	Worship in the Nave
Sun., January 19, 10:15 AM	Adult Formation in Kilbourne Hall: The Apostle Paul
Sun., January 19, 11:15 AM	Worship in the Nave with Streamed Service on YouTube
Mon., January 20, 1:00 PM	Centering Prayer with Teri Foley-Nelson
Mon., January 20, 1:00 PM	Facing Loss in the 'Living Room' at Worthington Presbyterian Church
Tues., January 21, 7:00 PM	Vestry in the Atrium and on Zoom
Wed., January 22, 6:00 PM	Singles Dining Out at J Alexander's
Thurs., January 23, 7:00 PM	Choir Rehearsal
Sun., January 26, 9:00 AM	Worship in the Nave
Sun., January 26, 10:15 AM	Adult Formation in Kilbourne Hall: The Apostle Paul
Sun., January 26, 11:15 AM	Worship in the Nave with Streamed Service on YouTube
Mon., January 27, 12:00 Noon	Facing Loss Lunch at La Chatelaine
Mon., January 27, 1:00 PM	Centering Prayer with Teri Foley-Nelson

December and January Birthdays

Elijah Talbot	Dec. 1	Gary Beougher	Dec. 22
Michael Heckert	Dec. 2	John Pascoe	Dec. 24
Tim Holland	Dec. 3	Ted Dziemianowicz	Dec. 25
Collin Rees	Dec. 3	RJ Allen	Dec. 27
Raymond Dickinson	Dec. 4	Brian Duncan	Dec. 27
Paul Patterson	Dec. 5	Kim Sharp	Dec. 28
Ana de Kalinke	Dec. 6	Eleanor Sturtz	Dec. 28
Ellie Thurman	Dec. 6	Bob McVicker	Dec. 29
Helen Hays	Dec. 7	Ella Reel	Dec. 29
Fred Herman	Dec. 7	Kathy Holland	Jan. 5
Gianna Rees	Dec. 7	Robert Shelly	Jan. 5
Penny Wallace	Dec. 8	David Talbot	Jan. 5
Marilyn Fawcett	Dec. 9	James Reese	Jan. 9
Rea Hederman	Dec. 9	Ben Sturtz	Jan. 9
Michael Rogers	Dec. 9	Nneoma Anaba	Jan. 11
Ellen Stukenberg	Dec. 9	Scarlett Reel	Jan. 12
Michelle Yost	Dec. 9	Barbara Rogers	Jan. 12
Susan Gabert	Dec. 10	Shari Schwartz	Jan. 12
Alex Troester	Dec. 10	Miriam Utter	Jan. 13
Louis Huffman	Dec. 12	Juliana Pascoe	Jan. 14
Zara Kenkel	Dec. 12	Ellen Hitch	Jan. 17
Logan Frank	Dec. 15	Rob Thurman	Jan. 17
Tom Broere	Dec. 17	Leigh Thurman	Jan. 21
Katherine Haines	Dec. 17	Matthew Dickinson	Jan. 23
Keith Redmill	Dec. 17	Monroe Welborne	Jan. 23
Ginny Ronning	Dec. 17	Leslie Heckert-Welborne	Jan. 28
Teri Foley-Nelson	Dec. 19	Dick Martin	Jan. 30
Joan Bird	Dec. 20		



All Saints Fund Donations

The following people have recently made a donation to the St. John's All Saints Fund:

In memory of Judy Burch

Gene Burch

In memory of Bill Weatherholt

Harry & Pamela Hartenstine

All donations to the All Saints Fund are used for permanent or semi-permanent improvements for St. John's programs or premises. If you wish to make a contribution in honor of someone or in thanksgiving for any event, simply write a check to St. John's Episcopal Church with a notation for the "All Saints Fund." The name of the person or event being memorialized should be included in the memo line.