



SECOND SUNDAY AFTER PENTECOST

JUNE 7, 2026

Preparation for Worship

*God, we look for you all around us but always, you are as close as our own breath.
You linger in our very flesh.*

*Forgive us for our struggles to remember you linger, also, in the flesh of all our neighbors:
The ones attacked, the ones policed, the ones condemned, the ones who are hungry, the ones turned
away. In those we wound, you are wounded also, but when we honor the flesh of another, you are
honored too.*

- M. Jade Kaiser

Voluntary

Prelude & Fugue in C Major
BWV 870

Johann Sebastian Bach
(1685-1750)

Greeting

Please sign and pass the friendship folder.

The Lord be with you. **And also with you.**

Introit

Exsultate, justi (excerpt)

Lodovico Viadana
(ca. 1564-1645)

Exsultate, justi, in Domino: Shout for joy, ye righteous, before the Lord:
Rectos decet collaudatio. It becomes the just to give him thanks.

— Psalm 33:1-3
Transl. John Rutter

✦ Opening Sentences

Strange One. Fabulous One. Fluid and ever becoming One.

**You are as close to us as our own breath,
yet your essence transcends all that we can imagine.**

You are mother, father, and parent.

You are sister, brother, and sibling.

Embodied in us, your creation,

we recognize our flesh in all its forms is made holy in you.

With thanksgiving, we celebrate your glorious manifestations.

**May we delight in the ways you have created us:
diverse, unique, surprising, and beautiful.**

Blessed are our bodies.

Blessed are we when we celebrate that which the world turns away.

Fill our hearts with a pride rooted in resistance to all that seeks to destroy.

Let us worship God!

✦ Hymn

For Everyone Born

FOR EVERYONE BORN



1. For ev - ery - one born, a place at the ta - ble,
2. For all gen - ders here, a place at the ta - ble,
3. For young and for old, a place at the ta - ble,
4. For gay, bi, and straight, a place at the ta - ble,
5. For ev - ery - one born, a place at the ta - ble,



for ev - ery - one born, clean wa - ter and bread,
re - vis - ing the roles, de - cid - ing the share,
a voice to be heard, a part in the song,
a cov - e - nant shared, a wel - com - ing space,
to live with - out fear, and sim - ply to be,



a shel - ter, a space, a safe place for grow - ing,
with wis - dom and grace, di - vid - ing the pow - er,
the hands of a child in hands that are wrin - kled,
a rain - bow of race and gen - der and col - or,
to work, to speak out, to wit - ness and wor - ship,



for ev - ery - one born, a star o - ver - head,
for all gen - ders here, a sys - tem that's fair,
for young and for old, the right to be - long,
for gay, bi, and straight, the chal - ice of grace,
for ev - ery - one born, the right to be free,

(continued)

Refrain

and God will de-light when we are cre - a - tors of jus-tice and
 joy, com-pas - sion and peace: yes,
 God will de-light when we are cre - a - tors of jus-tice,
 jus-tice and joy!

TEXT: Shirley Erena Murray, 1998, rev. 2022, 2023 | © 1998 Hope Publishing Company
 MUSIC: Brian Mann, 2006 | © Brian Mann (admin. General Board of Global Ministries t/a GBCMusik)

FOR EVERYONE BORN
 11.10.11.10 with refrain

✦ Prayer of Confession

**Wonderful God,
 since the beginning, you have been revealing yourself to us in different forms,
 but we struggle to understand.
 In Jesus, you took on the flesh of an infant,
 made yourself vulnerable, and risked everything,
 all in hopes of deepening your relationship with us.
 Like those who responded to you with violence and rejection,
 we acknowledge we turn away from your revelation in unexpected people and places.
 By your Spirit, make us the kind of community
 where all your children can find home, family, and embrace.**

silent prayer

Holy One, in your mercy. Hear our prayer.

✦ Declaration of Forgiveness

Believe the good news. In Jesus Christ we are forgiven.

✦ Response

Paul Vasile

1. Glo - ry to God, whose good - ness shines on me,
 2. World with - out end, 7 with - out end. A - men.
 and to the Son, whose grace has par - doned me,
 World with - out end, 7 with - out end. A - men.
 and to the Spir - it, whose love has set me free.
 World with - out end, 7 with - out end. A - men.
 As it was in the be-gin-ning, is now and ev-er shall be. A - men.

✦ **The Peace**

Peace be with you. **Peace be with all.**

Conversation with Children

Infants - Age 4 may go to the Nursery in Room 106.

Prayer for Illumination

Scripture Reading

Matthew 9:9-13

N.T. pg. 44

Word of God, word of life. **Thanks be to God.**

Anthem

There's a Wideness in God's Mercy

ST. HELENA
Calvin Hampton
(1938-1984)

There's a wideness in God's mercy
Like the wideness of the sea;
There's a kindness in his justice,
Which is more than liberty.
There is welcome for the sinner,
And more graces for the good;
There is mercy with the Savior;
There is healing in his blood.

There is no place where earth's sorrows
Are more felt than up in heaven;
There is no place where earth's failings
Have such kindly judgement given.
There is plentiful redemption
In the blood that has been shed;
There is joy for all the members
In the sorrows of the Head.

For the love of God is broader
Than the measure of the mind;
And the heart of the Eternal
Is most wonderfully kind.
If our love were but more faithful,
We should take him at his word;
And our life would be thanksgiving
For the goodness of the Lord.

Frederick William Faber (1814-1863)

Sermon

Choosing Welcome

John W. Wurster

silence and stillness



1. In the midst of new di - men - sions, in the face of
 2. Through the flood of starv - ing peo - ple, war - ring fac - tions,
 3. As we stand, a world di - vi - ded by our own self -
 4. We are ev - ery race and gen - der, all ex - pres - sions,
 5. Should the threats of dire pre - dic - tions cause us to with -



chang - ing ways, who will lead the pil - grim peo - ples
 and de - spair, who will lis - ten to the si - lenced?
 seek - ing schemes, grant that we, your glo - bal vil - lage,
 old and young, each a gift in your cre - a - tion,
 draw in pain, may your blaz - ing phoe - nix spir - it



wan - dering in their sep - arate ways?
 Who will light the flame of care?
 might en - vi - sion wid - er dreams. God of rain - bow, fi - ery pil - lar,
 each a love song to be sung.
 res - ur - rect the church a - gain.



lead - ing where the ea - gles soar, we your peo - ple, ours the jour - ney,



now and ev - er, here for - ev - er, now and ev - er - more.

TEXT: Julian B. Rush, 1979; rev. 1985 | rev. Matthew Webb and Avery Arden, 2023 | © Julian B. Rush
 MUSIC: Julian B. Rush, 1979 | © Julian B. Rush

NEW DIMENSIONS
 8.7.8.7 with refrain

Offering

Offertory

Nocturne in C-sharp Minor
 Op. 19, No. 4

Pyotr Ilyich Tchaikovsky
 (1840–1893)

The Sacrament of the Lord's Supper

Invitation to the Lord's Table

Great Thanksgiving

The Lord be with you.

And also with you.

Lift up your hearts!

We lift them to the Lord.

Let us give thanks to the Lord our God.

It is right to give our thanks and praise.

The Lord's Prayer

Our Father, who art in heaven,
hallowed be Thy name.
Thy Kingdom come, Thy will be done
on earth as it is in heaven.
Give us this day our daily bread,
and forgive us our debts,
as we forgive our debtors.
And lead us not into temptation,
but deliver us from evil;
for Thine is the Kingdom, and the power,
and the glory forever. Amen.

The Breaking of Bread and the Sharing of God's Gifts

Communion Music

✠ Prayer after Communion

By your body through which you feed us, O Lord,
join all flesh into one human family.
By the one cup of your lifeblood, O Christ,
make us one in our life and mission.
By the presence of your love at this Table, O Spirit,
dwell within us, rest upon us, and send us,
so that all peoples and places will know your love. Amen.

♠ Hymn

Sing a New World into Being

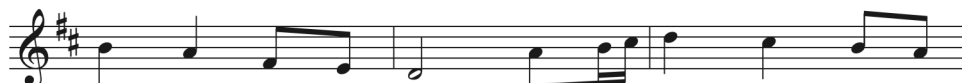
NETTLETON



1. Sing a new world in-to be - ing. Sound a bold and hope - ful
 2. Sing a new world in-to be - ing where each gen - der, class, and
 3. Sing a new world in-to be - ing where the home-less find a
 4. Sing a new world in-to be - ing. Join the an - cient proph-ets'



theme. Find a tune for si - lent yearn-ings. Lend your
 race brings its rain - bow gifts and col - ors to God's
 home, where no chil - dren ev - er hun - ger but are
 cry for a time of health and plen - ty when all



voice and dare to dream: dream a church where all who
 lim - it - less em - brace; where the lines that once di -
 filled in God's sha - lom; where all peo - ple work for
 tears have been wiped dry; when com - pas - sion flows like



wor - ship find their lives and loves be - long. Sing a
 vi - ded form in - stead the ties that bind. Sing a
 jus - tice, where all hate and ven - geance cease. Sing a
 wa - ters, pour - ing balm for all who grieve. Sing a



new world in-to be - ing. Sing as Christ in - spires your song!
 new world in-to be - ing; risk trans - form - ing heart and mind!
 new world in-to be - ing; raise the har - mo - nies of peace.
 new world in-to be - ing; live the prom - ise you be - lieve!

TEXT: Mary Louise Bringle, 2005 | © 2006 GIA Publications, Inc.
 MUSIC: Wyeth's Repository of Sacred Music, Part Second, 1813

NETTLETON
 8.7.8.7.D

♠ Charge and Blessing

Please be seated in silence for the closing voluntary, or kindly depart quietly.

Voluntary

Nun lob, mein Seel, den Herren
 ("Praise the Lord, My Soul")

Johann Gottfried Vierling
 (1750-1813)

SERVING TODAY

Pastors

Keatan King | Omar Rouchon | John Wurster

Liturgist

Selena Brinegar

Musicians

Carl Rubly, guest pianist | St. Philip Summer Choir | Matthew Dirst, organist | Thomas O'Neill, recorder
 Justin Langham, director of music

FLOWERS

The flowers today are given to the glory to God, in whose image we've all been made.

WORSHIP NOTES

Today's readings and prayers are borrowed from various sources such as:

- Genesis 12:1-9 – *The Lord will bless Abram and Sarai and make them a blessing.*
- Psalm 33:1-12 – *Rejoice in the Lord; happy are those who are chosen as God's own.*
- Hosea 5:15-6:6 – *On the third day God will raise us up; God desires steadfast love.*
- Psalm 50:7-15 – *Offer to God a sacrifice of thanksgiving; call on God in trouble.*
- Romans 4:13-25 – *The example of Abraham and Sarah; righteousness comes from faith.*
- Matthew 9:9-13, 18-26 – *Jesus calls sinners; he heals a woman and raises a dead girl to life.*

To receive communion today, please come forward via the center aisle, receive a piece of bread. The bread may be dipped in the chalice of grape juice and consumed or you may take a small cup of grape juice from the tray. You may return to your pew via the side aisles. Gluten-free bread is available. Just ask the servers as you come forward. Those with mobility challenges may receive communion in their seats. Just signal the servers. Because the table of Jesus Christ is open to all, everyone is welcome to receive communion today.

An additional offering is received when communion is celebrated. Gifts brought forward during today's final hymn support Living Waters for the World (LWW). This organization is a Christian ministry that provides sustainable clean water, fostering long-term, mutually beneficial, relationships between volunteers and communities in need. St. Philip joins Christ Church Bellaire, St. John's Presbyterian, Faith Presbyterian in Huntsville Alabama, Bellaire SW Houston Rotary and the Rotary Club of Newark, New York in these projects. They install a small to mid-sided water purification system with (and within) a church in an area of need. The water is sold very cheaply but with sufficient payback to maintain the filters, pay for workers etc. LWW also trains mission team leaders in partnership development, project administration and system sustainability evaluation and assurance; health, hygiene and spiritual education and LWW clean water system installation, operation and maintenance. To learn more about LWW visit their website: livingwatersfortheworld.org

Gifts may be brought to the front basket during the final hymn. You may also make a secure contribution through saintphilip.net and choosing the Communion fund or by sending a check to the church office, with "Communion" in the memo line.

IN OUR PRAYERS

Dick Nunn upon the death of wife Judy Nunn on May 30. A memorial service is scheduled for July 13 at 2 p.m.

There will be a memorial service for Ned Benson, husband of Mary Benson and father of Amye Webster on June 18 at 11 a.m.

St. Philippians and their families – Alex Brewer; David Winship; Margaret King; Jane Malczewskyj; Nancy E. Johnson; Molly Boren; Charlotte Kibler; Laney Miller; Laurie Sims; Jan Meyer; Emily Estill; Joy Maguire; Bonnie Moore; Bob Ardell; Diane Clarke; Mary Herlitz; Eleanor Grant; Don Padgett; Arlette Keene; Mezgebe Gebray; Bill Davis – brother of Meg Scott-Johnson; Lara Bain-niece of Jo Helland; Jonathan Castro – brother of David Castro; Susan Everhart – niece and Lisa Marcelletti – cousin of Nancy E. Johnson; Jo Hadley Smith – cousin of William Rowe; Katie Forbes – daughter of Marise Robbins-Forbes; Ann Perenyi – mother of Lad Perenyi; and Ann Perkins Cloud – cousin of Stephen Paine.

Homebound – Carolyn Keeble; Elizabeth Arp; Beverly Baker; John Bobbitt; Joan Boelens; Joe Harwood; Kathryn Harwood; Jan Ostendorf; Joyce Randolph; Lorraine Scott; Sondra Sullivan; and Mary Sinderson.

Friends of St. Philippians – Christiane Richter – friend of Roderick James; Ann Swanson – friend of Deborah Unruh; Kitty Manson and family; Tanya Voinche, Sidney Roach, and Joyce Freudenberg – friends of Stephen Paine; Mary Ann Thomas; Keith Kirby, Tandi Porter, Audrey Eubank Harris, Jay Stokes & Anna Domonte, friends of Curt & Sharon Webb; Marianne Hash – friend of Jane Cooper; Kenneth and Donna Benton – friends of William Rowe; Patty Ryan and Tom Barnett – friends of Robin and Gary Willis; and Shirley Stubblefield – friend of Barbara Runge.

If you have a pastoral care need or a prayer request you would like to share, please email: deacons@saintphilip.net

ACKNOWLEDGEMENTS

Cover art by Diana Weiss

Liturgical materials adapted from resources provided by More Light Presbyterians.

Music reprints and online streaming by permission under OneLicense.net account A-720890.

NURSERY CARE IS AVAILABLE THROUGHOUT SUNDAY MORNINGS

9:30 a.m. – 12:30 p.m. Infants to age 4 are invited to our Nursery which is staffed by professional childcare providers. Please find that our Nursery is located in the hallway off of the Gathering Area. An usher or a greeter will be happy to direct you there.

SUNDAY SCHOOL CLASSES FOR ALL AGES

SUNDAY SCHOOL CLASSES ARE ON SUMMER RECESS AND RETURN IN SEPTEMBER

ST. PHILIP DURING THE WEEK

Visit our website (www.saintphilip.net) to learn about all of the Christian Education programs we offer for children, youth, young adults, senior adults and families. Classes are offered on Sundays, as well as weekdays. If you would like to be a leader in classes next fall please contact Omar Rouchon via email at :

omar@saintphilip.net.

CHILDREN'S CHAPEL—We have Children's Chapel the second and fourth Sundays after *Conversation with Children*. In the Children's Chapel, our young disciples (K-5th grade) learn the whos, whats, wheres, whens and whys of worship, while praying, singing, and hearing God's word at an age-appropriate level. Children return to join the congregation in the first few pews on the lectern side of the church for the last hymn.

ST. PHILIP DURING THE WEEK

LAMBETH STUDY—Keatan King leads young adults in study every other Monday of the month evening at 7:00 PM via Zoom. (**June 15 & June 29**) It is a time of study, reflection, and prayer. If you would like more details, email Keatan at: keatan@saintphilip.net.

WOMEN'S MONTHLY BOOK CLUB—This self-led, interactive group produces lively discussions and wonderful fellowship. The next meeting is **June 11** at 7:00 p.m. We will be Zooming with author Jeff Chu author of *Good Soil*. If you have any questions or concerns, please contact Nina Lambright at:

nnl@lambrightlaw.com.

CAMPUS PLANNING UPDATES

Architects from English+Associates will be with us June 14 and June 28 to present a new design concept for our campus and to review the concept presented at the end of last year. The presentations will be at 9:30 am in Room 201 in the Education Building. Zoom participation is available, and the presentations will be recorded. See the [June Philip-Eye](#) for more information.



Are you curious about what the Peacemaking and Social Justice (P&SJ) Committee is all about? Do you have questions or ideas? You're Invited to join the P&SJ monthly meeting Sunday, June 14th. We meet right after worship on Room 205. No need to RSVP, just show up! If you have questions you're welcome to contact committee chair, Denise Wilborn (dwilborn55@gmail.com).

BELLS FOR BEGINNERS!

Have you ever wanted to make music in a fun and welcoming group setting? Join us for "Bells for Beginners" at St. Philip this summer on **Sundays—June 14 & July 12** in the Sanctuary immediately after church.

No experience or equipment needed – just come as you are to learn the basics of handbell ringing while playing beautiful music together. Perfect for teens and adults. Come ring with us and discover the joy of handbells! For more information, contact our director of music, Justin Langham, at justin@saintphilip.net.

MUSIC MINISTRY OPEN HOUSE!

Do you play an instrument? Have you ever sung in a choir? Have you played or are curious about handbells? Do you want to be a part of the music at St. Philip but not sure what to do? We hope you will make plans to join us for a Music Ministry Open House on Sunday, **July 12**, that is open to any and all children and adults who are interested in finding out more about the St. Philip music ministry.

You are encouraged to attend some or all of the following:

- 🎵 9:45 a.m. - Organ tour led by Matthew Dirst
- 🎵 10:15 a.m. - Watch or join choir rehearsal
- 🎵 12:15 p.m. - Bells for Beginners

For more information, contact our director of music, Justin Langham, via email justin@saintphilip.net or catch him after worship. Everyone is invited and encouraged to contribute towards the music ministry at St. Philip!



SUMMER OFFICE HOURS

Beginning **July 3** and continuing through **August 21**, the church office will be closed on Fridays. This schedule helps us conserve energy and better cover staff vacations. We will return to regular Friday office hours on **August 28**.

MUSIC AT ST. PHILIP

Carl Rubly Solo Piano Recital



Bach, Beethoven, Chopin, Liszt,
Scriabin, Tchaikovsky

Sunday, June 7, 3:00 PM-4:00 PM

St. Philip Presbyterian Church

4807 San Felipe St. Houston, TX 77056

Join us for a free piano recital featuring Carl Rubly, an award-winning young Houston pianist who has performed at St. Philip previously as a previous winner of the "Rochelle Liebling Kahan Competition for Child Piano Prodigies. Among his many awards and recognitions, Carl recently won concerto competitions with the Symphony North of Houston, Fort Bend Symphony, and Clear Lake Symphony, performing Prokofiev's First Piano Concerto with each orchestra. In this recital, Carl will present a program of piano masterworks by Bach, Beethoven, Chopin, Liszt, Scriabin, and Prokofiev.

Carl is also working to launch a new nonprofit, *Music for Hope*, which is dedicated to bringing the healing power of classical music to the community. This special recital of music has been offered for our congregation and local community in pursuit of this mission."

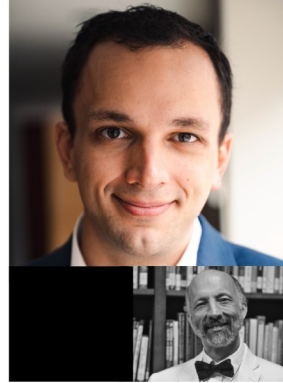
MUSIC AT  ST. PHILIP

2026 SUMMER ORGAN SERIES



**Sunday,
July 12 | 3 pm**
Emily Amos, Organist

Featuring music by:
J.S. Bach, David Briggs,
Rachel Laurin, among
others.



**Sunday,
August 16**

**2:30 pm | Lecture
3:00 pm | Concert**

Bryan Anderson, Organist
Dr. Louis Markos, Narrator

Featuring: Petr Eben's
"Labrinth of the World and
Paradise of the Heart"

Free Admission | St. Philip Presbyterian Church
4807 San Felipe, Houston, TX 77056 | saintphilip.net

FOLLOW US ONLINE
Music at St Philip 

GOD WELCOMES ALL
THE STORY OF PETER & CORNELIUS

ACTS 10:1-48

VACATION BIBLE SCHOOL
ALL CHILDREN AGES 3 - 5TH GRADE
ARE WELCOMED > THERE IS NO COST
ST. PHILIP PRESBYTERIAN CHURCH
4807 SAN FELIPE - EDUCATION BLDG.

& WEAR CLOSED-TOE SHOES 
*PLEASE BRING A BAGGED LUNCH 

SATURDAY
JUNE 13
9 AM - 2 PM

MORE INFO | REGISTER: SAINTPHILIP.NET

ST. PHILIP VBS SUMMER 2026



[GUEST BOOK]

Welcome to Worship at St. Philip

Please register your attendance by scanning the QR code or by visiting the Guest Book tab at saintphilip.net.

AS FOLLOWERS OF JESUS CHRIST,
we seek to be an inclusive,
grace-filled community,
engaging the world with open minds,
willing hands and generous hearts.

WE LONG
for deeper faith,
vibrant hope
and boundless love
for everyone, every day, everywhere.

Thank you for joining us today! We hope that you find our worship together to be joyous, meaningful, and thought-provoking. **Children of all ages** are welcome to worship with their families. Activity bags containing worship aids for children are available in the Narthex on the way into the Sanctuary. Resources such as noise-dampening headphones and fidget tools for our neurodivergent neighbors and anyone needing sensory support can be found there too.

Nursery care is available throughout the morning from 8:30 AM–12:30 PM. Infants to age 4 are invited to our Nursery which is staffed by professional childcare providers. Please find our Nursery has returned to the Education Bldg. and can be accessed from the hall off the Gathering Area on the first floor. An usher or a greeter will be happy to direct you there.

A **Hearing Loop** is installed within the sanctuary. If you have a hearing aid equipped with a telecoil, please activate your “T switch” to hear the worship service most clearly. If you need assistance with hearing the service clearly and do not have a t-coil equipped hearing aid, please ask an usher for wireless headphones.

LARGE PRINT COPIES OF TODAY’S BULLETINS ARE IN THE NARTHEX.

Contributions, pledge payments, communion gifts and other donations to support the Church can be made anytime through our website, or sent to the Church Office at 4807 San Felipe, Houston, TX 77056.



I Give Electronically—in response to parents’ hopes that their children might be able to see their ongoing commitment to St. Philip and with the intent to better represent the totality of our giving as a congregation, we have available in the pews giving cards that can be placed in the offering plate by our electronic givers.



[MAKE A CONTRIBUTION]

Connect with St. Philip through saintphilip.net and our social media. To join our e-mail list for regular news updates, send a note to lorrie@saintphilip.net.

If you are interested in joining St. Philip Presbyterian Church by profession of faith, by reaffirming your faith, or by transferring your membership, please speak with one of the ministers today or call the church office during the week. **The Session meets the third Sunday of each month after the 11:00 worship service in Room 100 for the purpose of receiving new members.**

Worship with us, whenever, wherever. Our 11:00 AM Sunday service is live-streamed at saintphilip.net. Services can be viewed live or later in our video archives.

Lost & Found—did you leave a pair of glasses, umbrella, or other item during worship? There is a canvas basket in the library where these items may be found. Jewelry, phones and more valuable items are turned into Lorrie Castle in the Church Office, lorrie@saintphilip.net or 713-622-4807.

Nametags—Please wear your nametags not just in the sanctuary, but as you socialize before and after worship and at other events. To make it easier, if you don't want to bring your nametag home, there are labeled wicker BASKETS by several exit doors for you to return your nametag at the last possible moment! Those returned tags will be replaced on the boards in the narthex before the following Sunday morning. Visitor nametags are available in the pews and from an usher.

St. Philip Day School is a 501(c)(3) nonprofit organization dedicated to providing high-quality childcare at no cost to low-income families. (www.stphilipdayschool.org) To support the school, **please make all contributions payable directly to St. Philip Day School** or visit their website for online donations. You are welcome to leave in the church offering plate or mail to St. Philip Day School, 4807 San Felipe, Houston, 77056. If you have any questions, please email: Director@stphilipdayschool.org.